

COMMUNITY  
ECONOMIC  
RESILIENCE  
FUND  
(CERF)  
PROGRAM

L.A. County HRTC Meeting

[www.laedc.org/CERF](http://www.laedc.org/CERF)



Los Angeles  
COUNTY LINE



---

## LA County CERF HRTC Meeting Agenda June 2nd, 2023

---

- Welcome, and Introductions of New Partners
- Important Dates
- News from the State: CERF Catalyst Program
- 2-Hour Working Meeting Recap
- Process Mapping
- Stakeholder Update
- Upcoming Meeting Dates
- Next Steps
- Questions/Comments



**MARCH 1ST, 2023**

Fiscal Agent and State execute the contract.

**MAY 1ST, 2023**  
Planning Phase Plan Due

**JUNE 6TH, 2023**  
Governance Structure Due

**JULY 14TH, 2023**  
Governance Seating Due

**AUGUST 31ST, 2023**  
Regional Summary Report Pt. 1 Due  
Part 1 - Snapshot of socio-economic conditions (Research) in the region: mapping stakeholders, providing a regional summary, and conducting analyses.

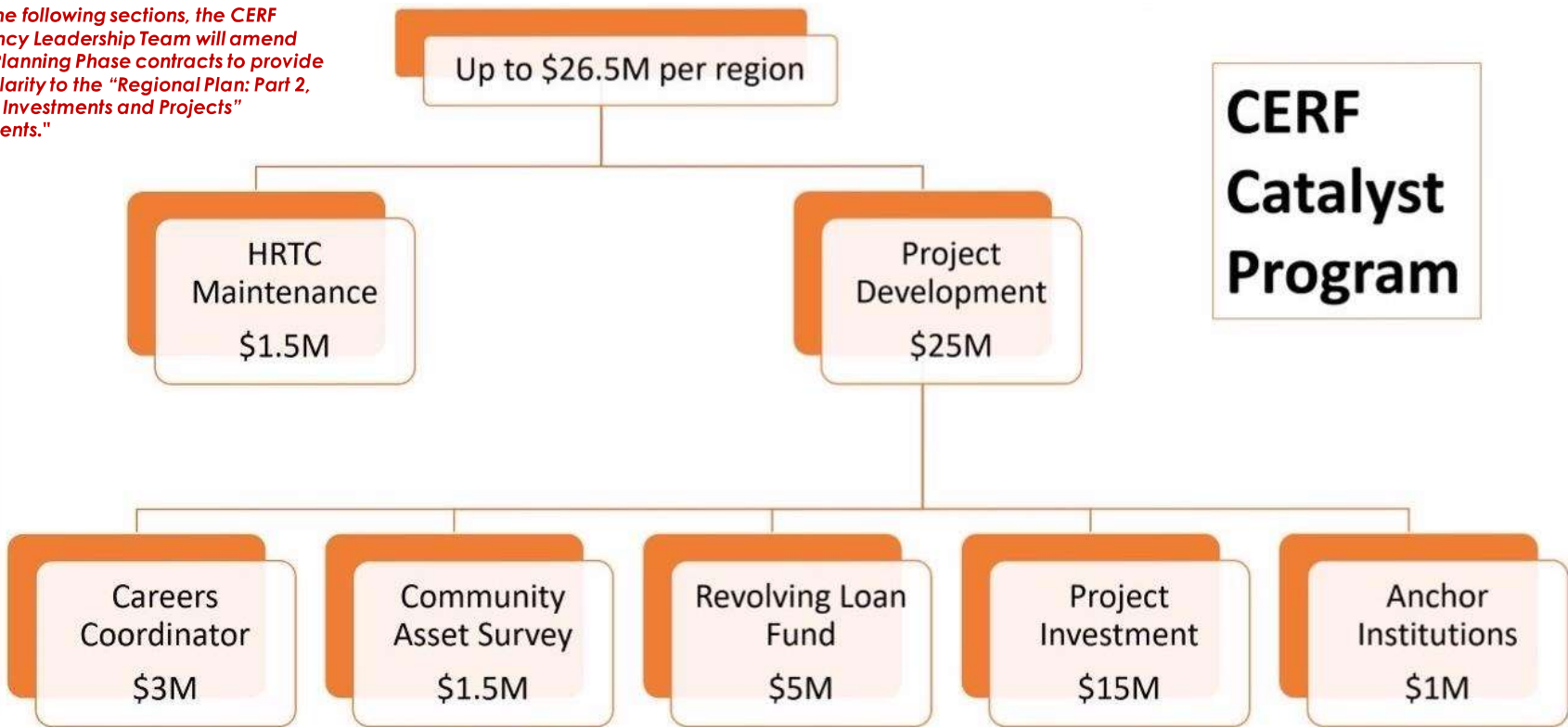
**JUNE 30TH, 2024**  
Regional Plan Pt. 2 Due

## IMPORTANT DATES

CERF LA HRTC TIMELINE

"Due to the following sections, the CERF Interagency Leadership Team will amend existing Planning Phase contracts to provide greater clarity to the "Regional Plan: Part 2, Strategic Investments and Projects" requirements."

# CERF Catalyst Program



## Possible narrative of the remaining \$450M for Implementation Phase dollars...

- \$26.5M
- X13 regions
- \$344.5M
  
- \$450M
- -344.5M
- \$105.5M
  
- $\$105.5\text{M}/13 = \$8.12\text{M}$
  
- $\$26.5\text{M} + \$8.12\text{M} = \$\mathbf{34.6\text{M}}$

# Catalyst Funding: Pre-Development Timeline





# CERF 2023 Program Activities Overview



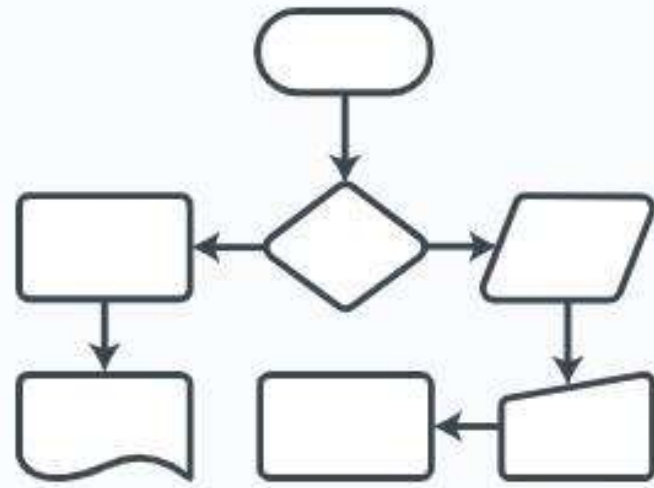


## 2 Hour Working Meeting Recap:

- The working meeting focused on the governance structure and steering committee.
- Discussions revolved around equitable representation, selecting affinity hub leads, the allocation seats on the Steering Committee and their selection process.
- Proposals were made for achieving the desired supermajority, including designated equity seats.
- The group also deliberated on criteria for member selection and organizational inclusion.
- The decision was reached to remain with 33 members on the steering committee as recommended by the Governance Committee, with a focus on equity through criteria.
- Further discussions on membership criteria, selection/election processes, and affinity hub leads will take place at the upcoming Governance Meeting on Friday, June 9th.



**Process Mapping**  
**Process Will Begin**  
**Vendor: The Mark**



# Stakeholder Analysis

## Stakeholder Count

---

**6/1/23**

**Total Number of  
Organizations Engaged**

425

---

**Number of Organizations  
Officially Onboarded (CERF  
Collective Partnership  
Agreement submitted)**

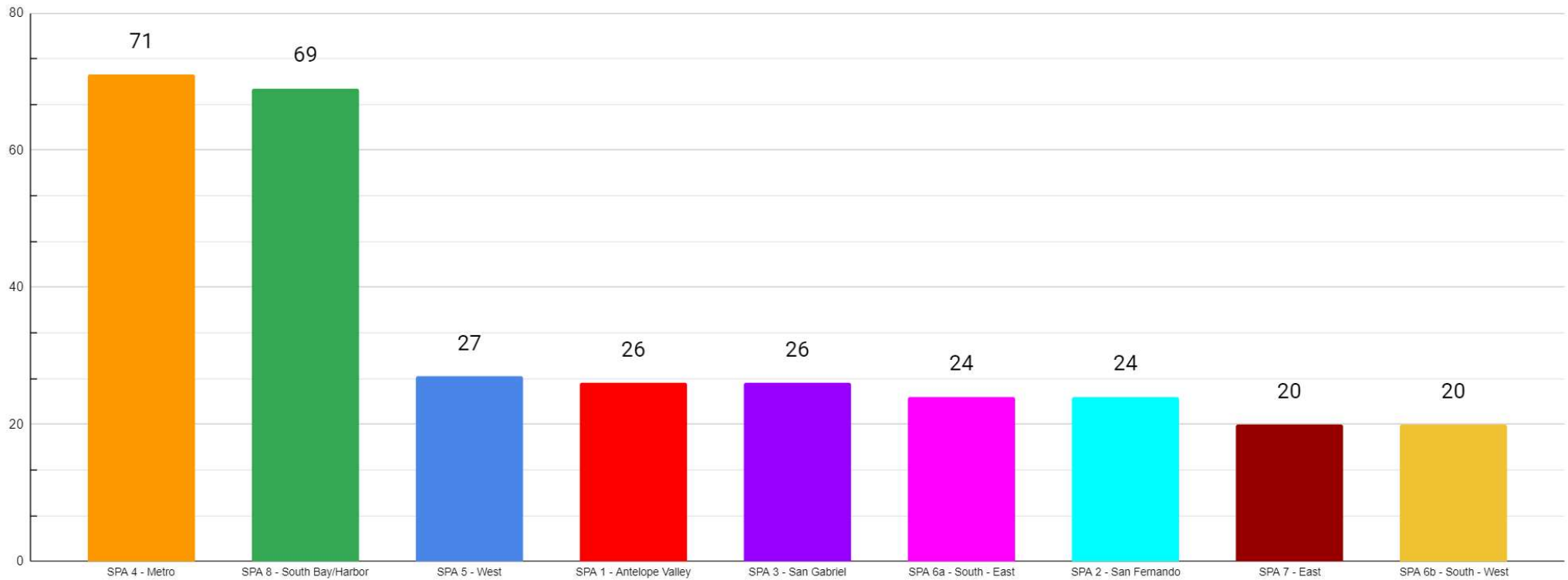
308

---

**Number of Organizations  
Not Fully Onboarded**

**117**

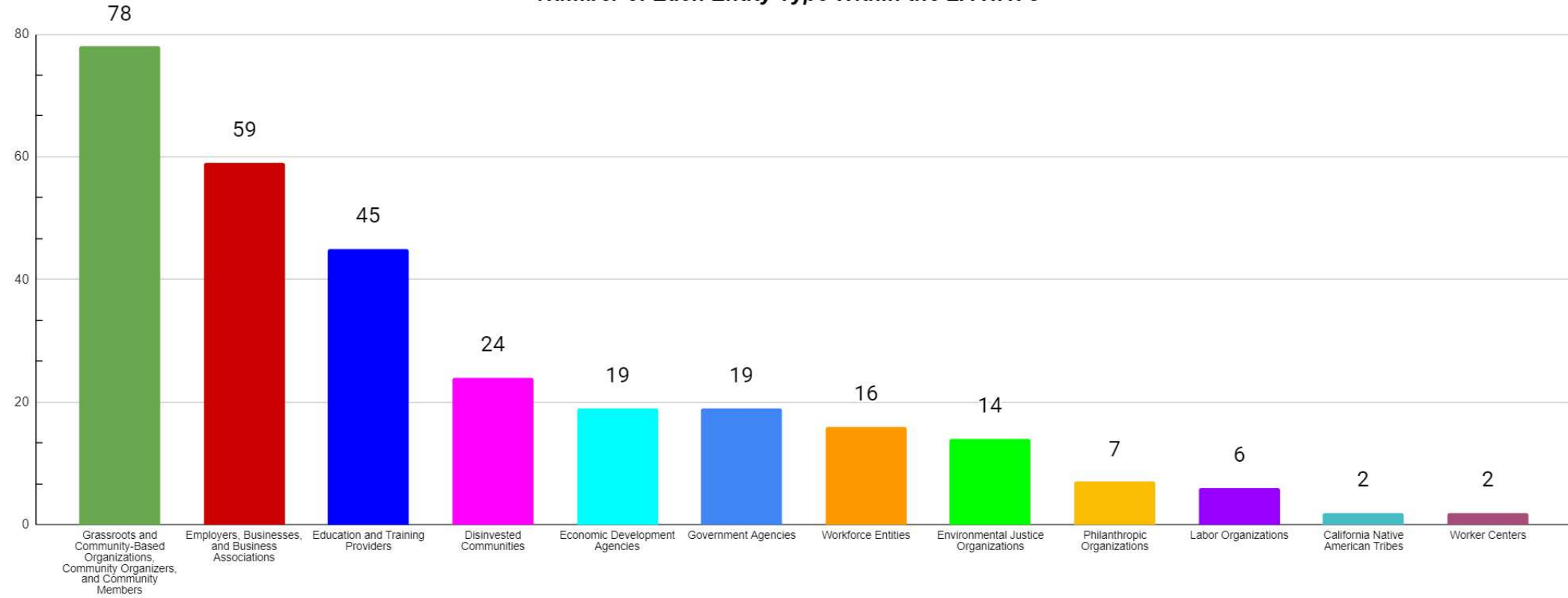
**Geographic Breakdown of LA HRTC Members by SPA (by Member Headquarters)**



***Based on the location of each organization's headquarters as reported by each onboarded member***



**Number of Each Entity Type Within the LA HRTC**



***Based on the primary stakeholder category of each organization as reported by each onboarded member***

- Stakeholder entity type refers to the entities the LA HRTC is mandated by the State to include balanced representation from for reporting purposes

# L.A. County CERF HRTC Upcoming Meeting Dates

## Outreach & Engagement Committee

- June 7th | 10:00 am

## Governance Committee

- June 9th | 1:00 pm

## HRTC Bi-weekly Meeting

- June 16th | 9:00 am

# Next Steps

---

- Governance Structure due to the state on Tuesday, June 6th
  - The seating process of the Steering Committee, the Affinity Hub Leads and Subregional Tables selection criteria/process, and the method in which decisions will be approved by the Steering Committee do not need to be included in this submission
- Governance Committee Meeting on Friday, June 9th from 1pm-2pm
  - Steering Committee comprising of a subset of the Affinity and Subregional Tables
  - Steering Committee seating criteria/process
  - Affinity Hub and Subregional Table selection criteria/process
  - Decision approval process of the Steering Committee
- CERF LA HRTC Website Launch
  - Mid-June





**LOS ANGELES COUNTY**  
ECONOMIC DEVELOPMENT CORPORATION  
*Collaboratively Advancing Growth and Prosperity for All*

# Thank you!

For more info, please visit:  
[www.laedc.org/cerf](http://www.laedc.org/cerf)

Questions can be directed to  
[cerf@laedc.org](mailto:cerf@laedc.org).

