

COMMUNITY
ECONOMIC
RESILIENCE
FUND
(CERF)
PROGRAM

L.A. County HRTC Meeting

www.laedc.org/CERF



Los Angeles
COUNTY LINE

LA County CERF HRTC Meeting Agenda June 30th, 2023

- Welcome, and Introductions of New Partners
- U.S. Small Business Administration Presentation
 - Barbara Nitis
- Los Angeles County Federation of Labor, AFL-CIO
 - Kristal Romero
- Important Dates
- CERF Catalyst Program Webinar/Public Comment
- Unified Letter
- Steering Committee – A Subset of Affinity Hubs
- Process Mapping/Research RFP Update
- Pilot Project Feedback Request
- Stakeholder Update
- Upcoming Meeting Dates
- Next Steps
- Questions/Comments



MARCH 1ST, 2023
Fiscal Agent and State
execute the contract.

MAY 1ST, 2023
Planning Phase Plan Due

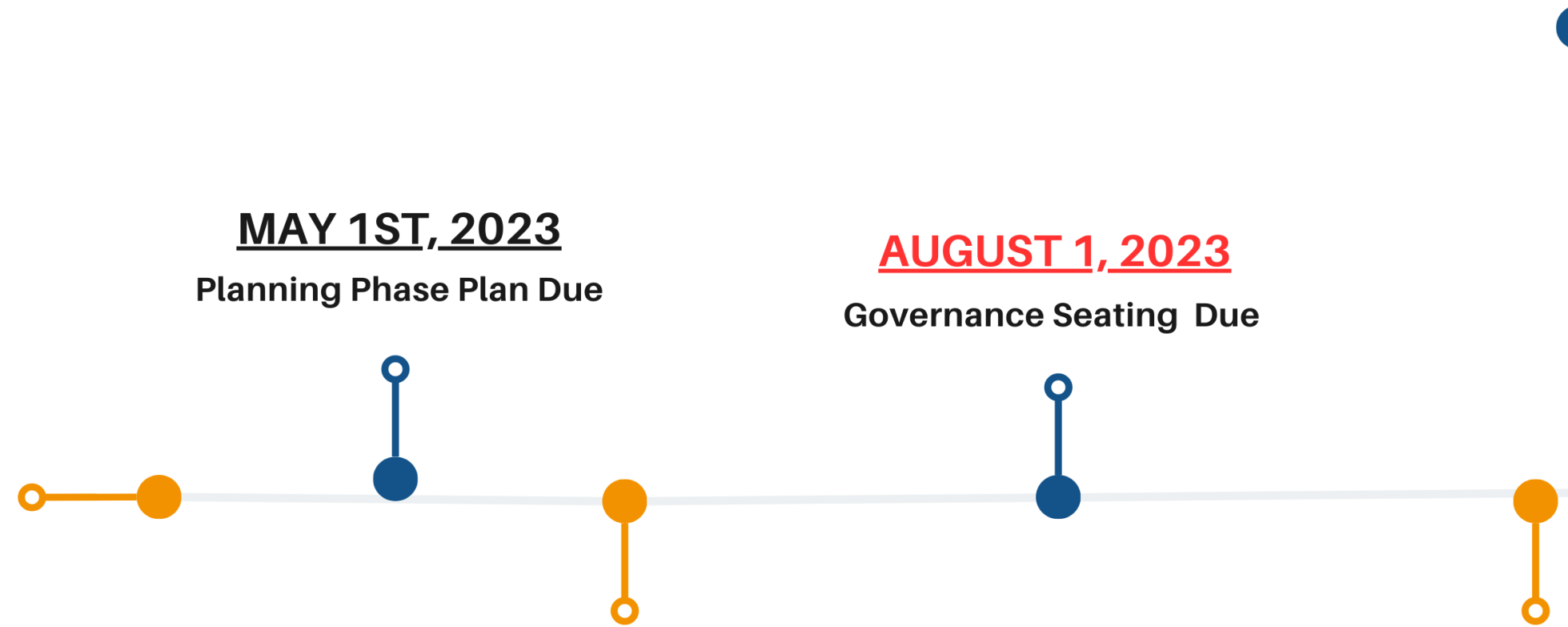
AUGUST 1, 2023
Governance Seating Due

JUNE 6TH, 2023
Governance Structure Due

AUGUST 31ST, 2023
Regional Summary Report Pt. 1
Due

Part 1 - Snapshot of socio-economic conditions (Research) in the region: mapping stakeholders, providing a regional summary, and conducting analyses.

JUNE 30TH, 2024
Regional Plan Pt. 2 Due



IMPORTANT DATES

CERF LA HRTC TIMELINE

The deadline to submit public comment for the proposed Catalyst Program is Friday, July 21, 2023.

Submit all comments to WSBCERF@edd.ca.gov
Please include “CERF Catalyst Program” in the email subject line.

In addition to the public comment period, the Office of Planning and Research (OPR) team will host a workshop for stakeholders to ask questions and provide input on the proposed Catalyst Program.

[Please Register Here for the CERF Catalyst Program Workshop](#)

Wednesday July 5 from 2 to 3 p.m.

After registering, you will receive a calendar invite and Zoom link.

[Framework for the Catalyst Program](#)



CERF Catalyst Program - Public Comment Period and Workshop Announcement

Community Economic Resilience Fund

L.A. HRTC

Date

The Honorable Stewart Knox
Secretary of the California Labor & Workforce Development Agency
800 Capitol Mall, Suite 5000
Sacramento, CA 95814

The Honorable Samuel Assefa
Director of the Governor's Office of Planning and Research
1400 Tenth Street
Sacramento, CA 95814

The Honorable Dee Dee Myers
Director of the Governor's Office of Business and Economic Development
1325 J Street, Suite 1800
Sacramento, CA 95814

Subject: Community Economic Resilience Fund (CERF) Catalyst Program

Dear Secretary Knox, Director Assefa and Director Myers,

On behalf of the over 300 public, private, and non-profit members that make up the Community Economic Resilience Fund Los Angeles County High Road Transition Collaborative (CERF LA HRTC), we respectfully write to recommend changes to the Catalyst Program recently released by the CERF Interagency Team.

First and foremost, we would like to commend the state for its commitment to preparing projects in disinvested communities and maximizing funding opportunities for CERF projects. The CERF Catalyst Program's objective to overcome timeline constraints and expedite support to communities aligns with our mission to promote sustainable and inclusive development in our regions.

Unified Letter Poll

Action Letter

In collaboration with our esteemed members, The CERF LA HRTC has drafted a unified letter expressing our concerns regarding the distribution of funding across the 13 regions in California.

We aim to shed light on the unique challenges faced by the diverse and geographically expansive Los Angeles region.

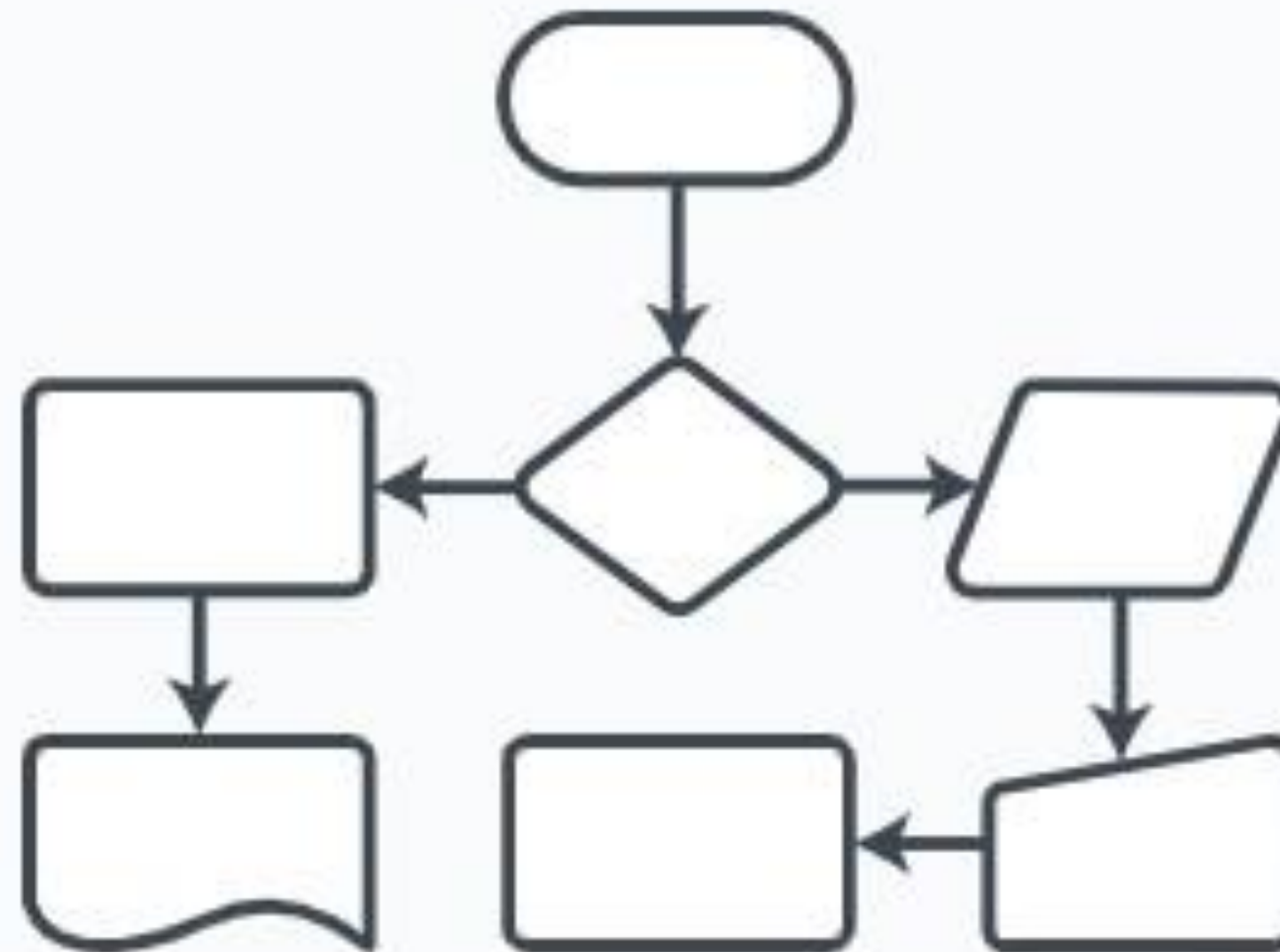
Our intention is to ensure that the allocation of funds takes these factors into careful consideration.

Poll: <https://www.surveymonkey.com/r/GK2ZPDY>

Out Out Form:

<https://forms.gle/GH9RzurJb67N3m2P9>

Process Mapping & Research RFPs



+

•

○

Pilot Project Application Feedback Request

• "We can give feedback to those who applied, by request only from the designated point of contact. If your HRTC partners applied multiple applications each designated point of contact will need to submit a request to us and we will provide feedback for that application. If you have any additional questions, please let us know."

- Best regards,*
- The CERF Team*

Stakeholder Analysis

Stakeholder Count

6/28/23

**Total Number of
Organizations Engaged**

431

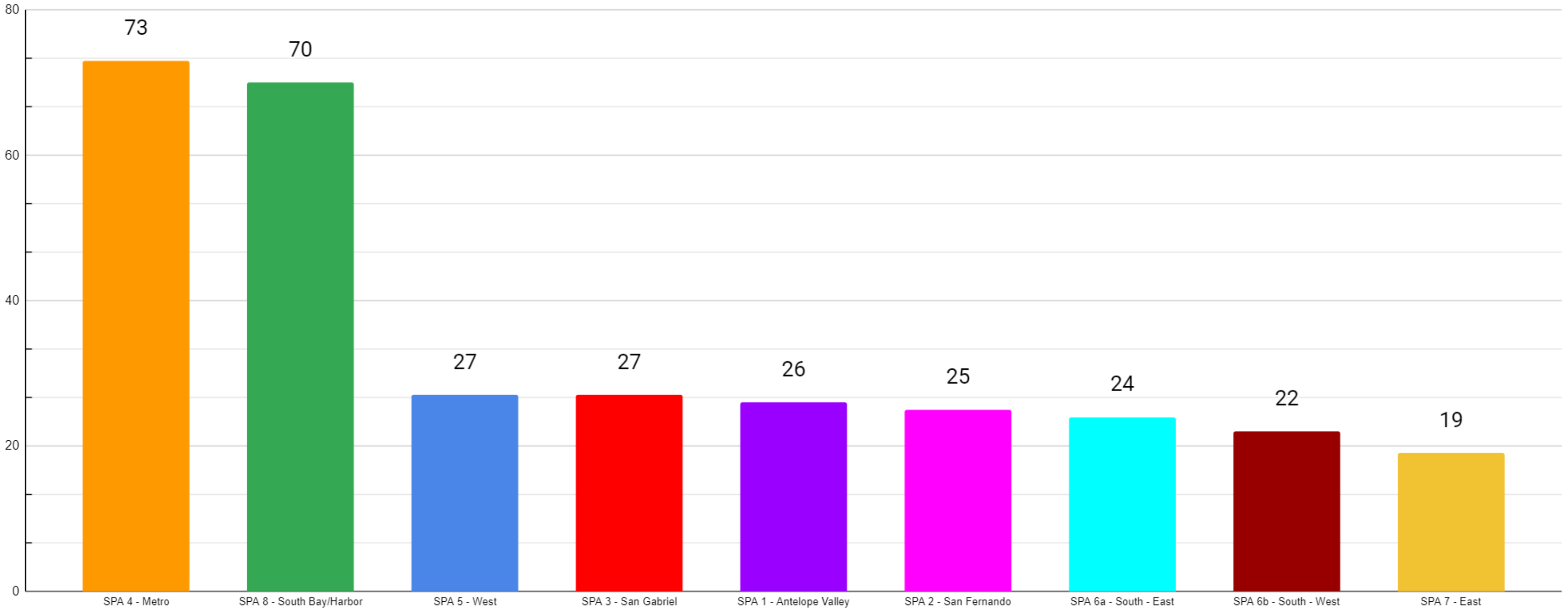
**Number of Organizations
Officially Onboarded (CERF
Collective Partnership
Agreement submitted)**

314

**Number of Organizations
Not Fully Onboarded**

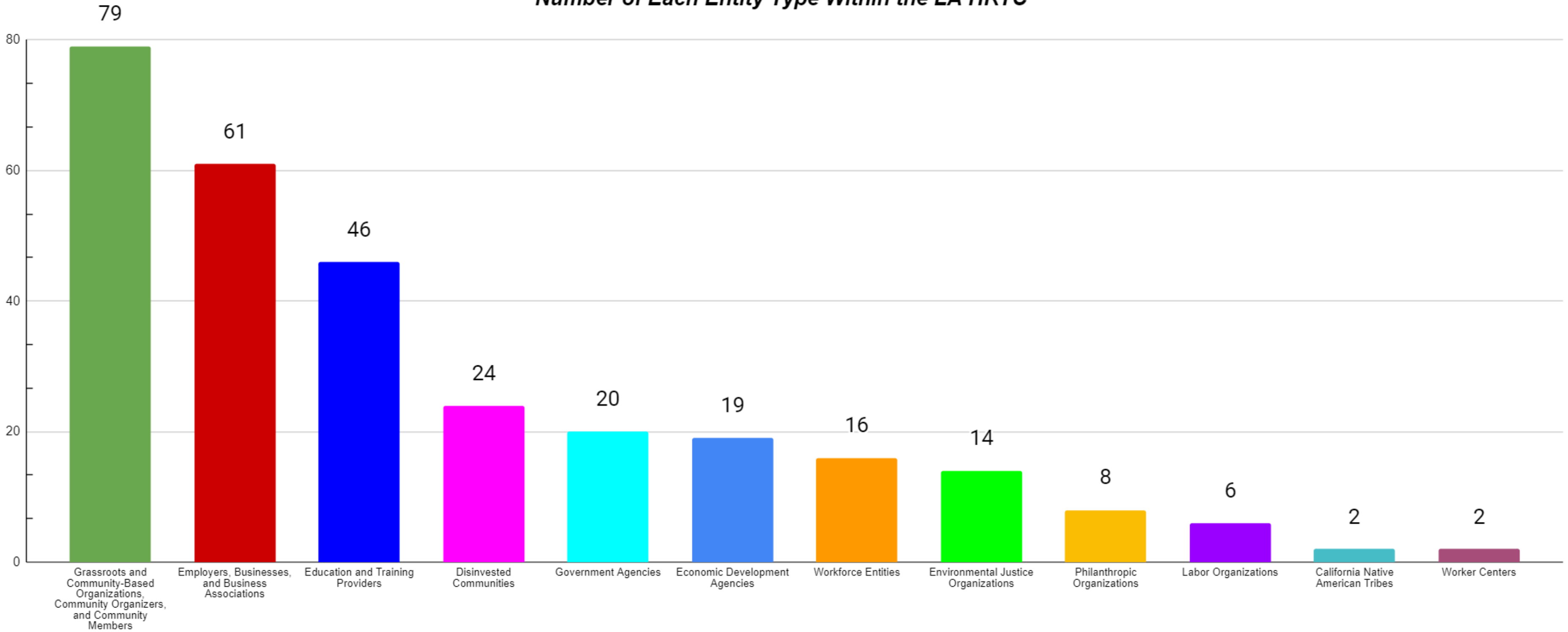
117

Geographic Breakdown of LA HRTC Members by SPA (by Member Headquarters)



Based on the location of each organization's headquarters as reported by each onboarded member

Number of Each Entity Type Within the LA HRTC



Based on the primary stakeholder category of each organization as reported by each onboarded member

- Stakeholder entity type refers to the entities the LA HRTC is mandated by the State to include balanced representation from for reporting purposes

L.A. County CERF HRTC Upcoming Meeting Dates

Outreach & Engagement Committee

- July 5th | 10:00 am

Governance Committee

- TBD

HRTC Bi-weekly Meeting

- July 14th | 9:00 am

Next Steps

- Governance Committee Meeting will be announced in the next week
- Steering Committee comprising of a subset of the Affinity and Subregional Tables
 - Steering Committee seating criteria/process
 - Affinity Hub and Subregional Table selection criteria/process
 - Identify a decision approval process of the Steering Committee (e.g. majority voting, supermajority voting, consensus, etc.)



LOS ANGELES COUNTY
ECONOMIC DEVELOPMENT CORPORATION
Collaboratively Advancing Growth and Prosperity for All

Thank you!

For more info, please visit:
www.laedc.org/cerf

Questions can be directed to
cerf@laedc.org.

