

COMMUNITY
ECONOMIC
RESILIENCE
FUND
(CERF)
PROGRAM

L.A. County HRTC Meeting

www.laedc.org/CERF



Los Angeles
COUNTY LINE

LA County CERF HRTC Meeting Agenda June 2nd, 2023

- Welcome, and Introductions of New Partners
- Important Dates
- CERF Catalyst Program
- Unified Letter
- Process Mapping Update
- Stakeholder Update
- Upcoming Meeting Dates
- Next Steps
- Questions/Comments



MARCH 1ST, 2023

Fiscal Agent and State
execute the contract.

MAY 1ST, 2023
Planning Phase Plan Due

JULY 14TH, 2023
Governance Seating Due

JUNE 6TH, 2023
Governance Structure Due

AUGUST 31ST, 2023
Regional Summary Report Pt. 1 Due
Part 1 - Snapshot of socio-economic conditions
(Research) in the region: mapping stakeholders,
providing a regional summary, and conducting
analyses.

JUNE 30TH, 2024
Regional Plan Pt. 2 Due

IMPORTANT DATES

CERF LA HRTC TIMELINE

Why Catalyst Funds?

- Prepare more projects in disinvested communities
 - Pre-development bridges the gap between planning and implementation
 - Lessons from Economic Development Pilots
 - More projects developed by and for disinvested communities
- Maximize funding streams
 - Federal, state, and private funding only available for ready-to-go projects
 - Increase the amount of capital flowing into regions
- CERF timeline constraints
 - Ensure full expenditures of CERF funding
 - Funding will reach communities sooner

Catalyst Program



Catalyst Funding Streams

Up to \$26.5M per region

HRTC Maintenance
\$1.5M

Project Development
\$25M

Careers Coordinator
\$3M

Community Asset Survey
\$1M

Revolving Loan Fund
\$5M

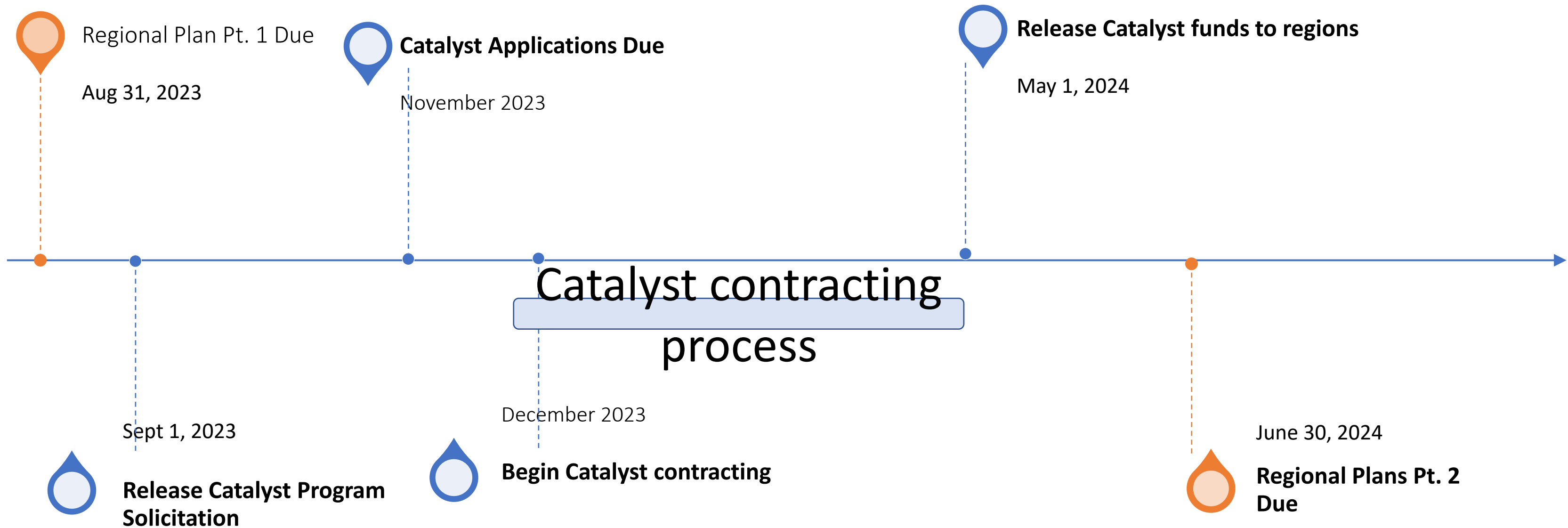
Project Investment
\$15M

Anchor Institutions
\$1M

The Catalyst Program will allocate up to \$26.5 million per region to spur transformational investments.

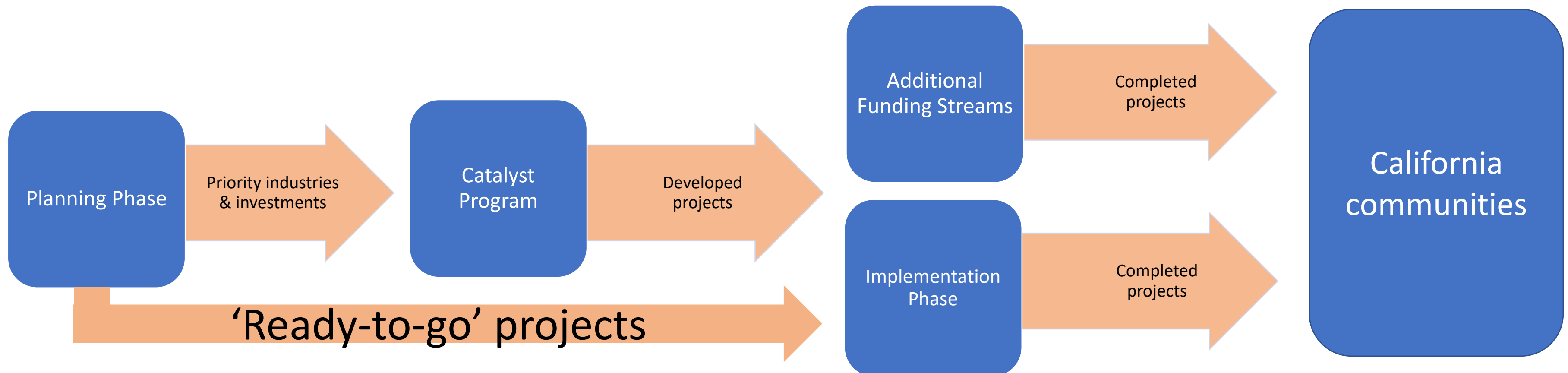


Catalyst Timeline



Catalyst Program applications will open at the end of Phase 1 of the Planning Phase. Funds will be released to regions prior to the end of Phase 2.

Catalyst Inputs and Outputs



Outputs from each phase of the process become inputs for the next phase. Priority industries identified in the Planning Phase will become the Industry Collaboratives in the Catalyst Program. Projects developed through



CERF 2023 Program Activities Overview



Possible Narrative of the Remaining \$450M for Implementation Phase Dollars...

- \$26.5M
- X13 regions
- \$344.5M

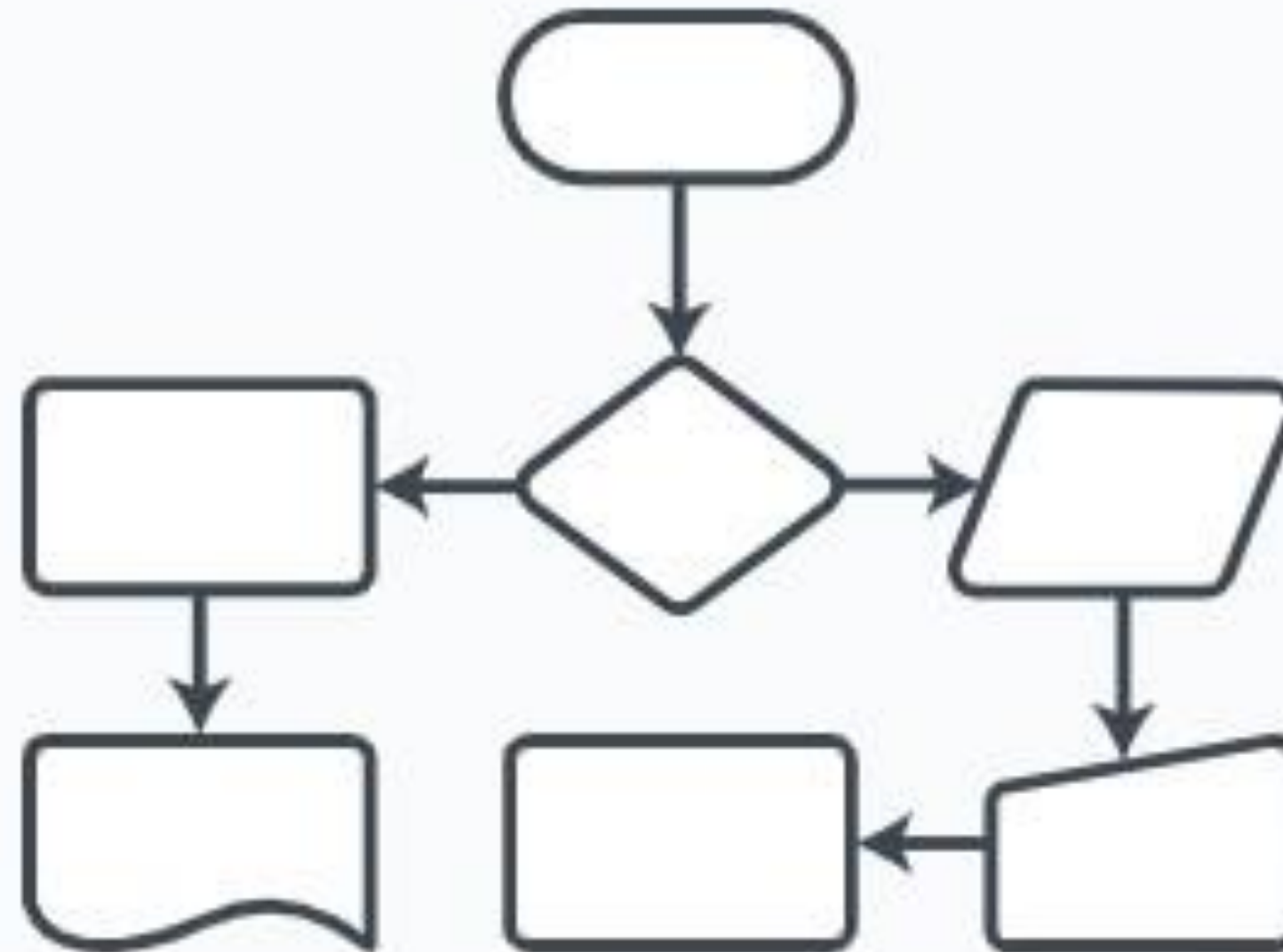
- \$450M
- -344.5M
- \$105.5M

- $\$105.5M / 13 = \$8.12M$

- $\$26.5M + \$8.12M = \$34.6M$



Process Mapping Delay Vendor: The Mark



Outreach and Engagement Jam Board Activity

The Outreach and Engagement Committee is seeking feedback from our HRTC members to:

1. Identify groups that may lack sufficient representation within the HRTC.
2. Provide suggestions for refining the Affinity Hub Eligibility Criteria.

Recap: 12 Affinity Hub Leads will receive \$50K grants to facilitate regular conversations within their respective affinity areas, respond to data analysis, identify community needs, share information with other community/business/industry cluster tables, provide capacity-building resources for community participation, and gather feedback and decisions from community members across Affinity and Subregional Tables. Their primary focus will be to facilitate the flow of information regarding HRTC priorities between stakeholders and the Steering Committee.

In the Jamboard, additionally, provide your valuable feedback regarding the eligibility criteria for individuals seeking to apply for an Affinity Hub Lead grant.

[Link](#)



Stakeholder Analysis

Stakeholder Count

6/13/23

**Total Number of
Organizations Engaged**

430

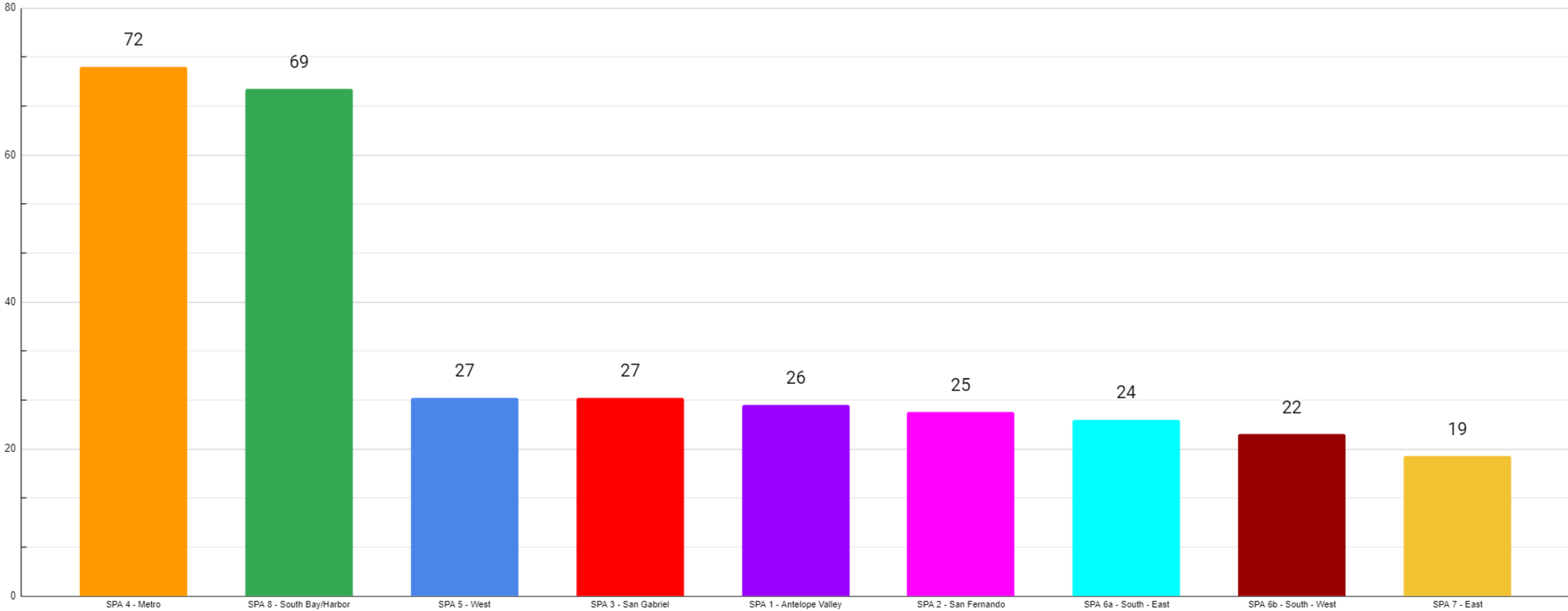
**Number of Organizations
Officially Onboarded (CERF
Collective Partnership
Agreement submitted)**

312

**Number of Organizations
Not Fully Onboarded**

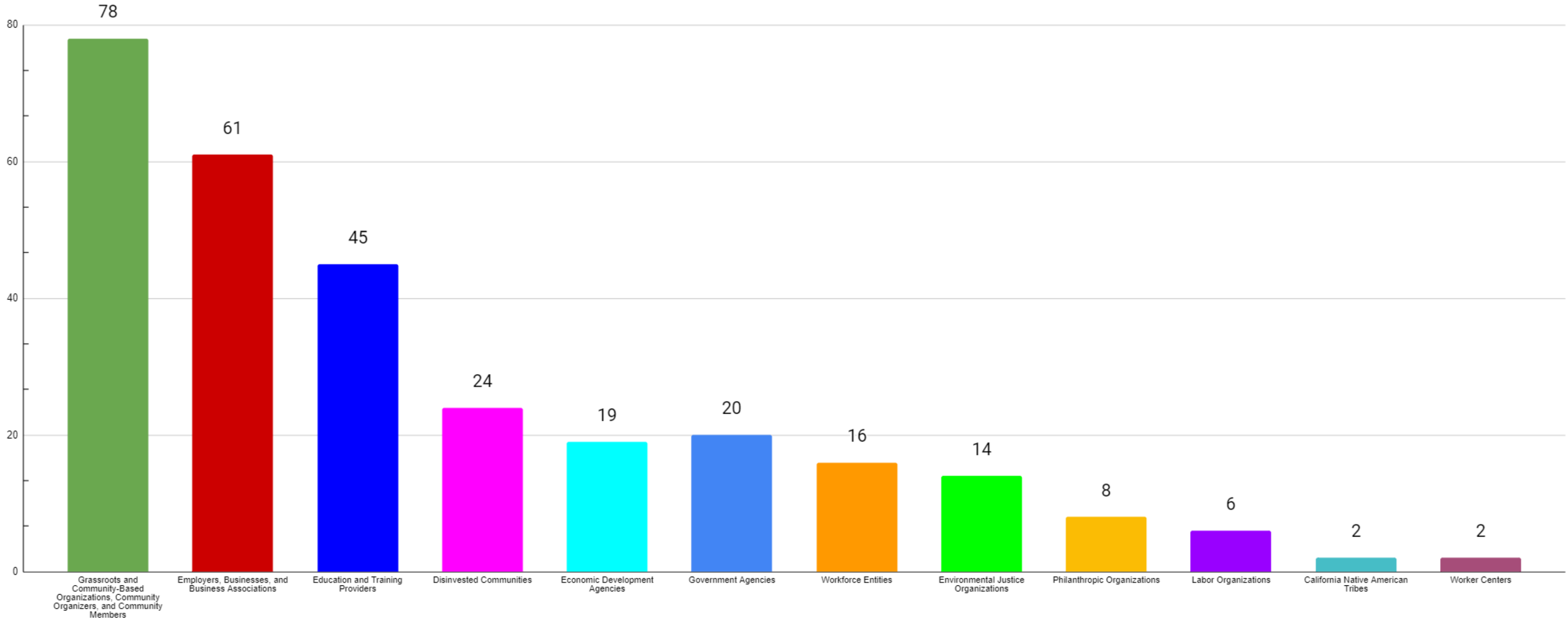
118

Geographic Breakdown of LA HRTC Members by SPA (by Member Headquarters)



Based on the location of each organization's headquarters as reported by each onboarded member

Number of Each Entity Type Within the LA HRTC



Based on the primary stakeholder category of each organization as reported by each onboarded member

- Stakeholder entity type refers to the entities the LA HRTC is mandated by the State to include balanced representation from for reporting purposes

L.A. County CERF HRTC Upcoming Meeting Dates

Outreach & Engagement Committee

- June 21st | 10:00 am

Governance Committee

- June 21st | 12:00 pm

HRTC Bi-weekly Meeting

- June 30th | 9:00 am

Next Steps

- Governance Committee Meeting on Friday, June 21st from 12pm-1pm
 - Steering Committee comprising of a subset of the Affinity and Subregional Tables
 - Steering Committee seating criteria/process
 - Affinity Hub and Subregional Table selection criteria/process
 - Identify a decision approval process of the Steering Committee (e.g. majority voting, supermajority voting, consensus, etc.)
- CERF LA HRTC Website Launch
 - Late-June



LOS ANGELES COUNTY
ECONOMIC DEVELOPMENT CORPORATION
Collaboratively Advancing Growth and Prosperity for All

Thank you!

For more info, please visit:
www.laedc.org/cerf

Questions can be directed to
cerf@laedc.org.

