



LOS ANGELES COUNTY
ECONOMIC DEVELOPMENT CORPORATION
Collaboratively Advancing Growth and Prosperity for All

COMMUNITY ECONOMIC RESILIENCE FUND (CERF) PROGRAM

L.A. County HRTC Meeting

www.laedc.org/CERF



Los Angeles
COUNTY LINE

A green rectangular sign with white text, mounted on wooden posts. The sign is set against a background of a city skyline with palm trees under a clear blue sky. The entire scene is framed by a large orange circular border.



LA County CERF HRTC Meeting Agenda March 24, 2023

- Welcome, and Introductions of New Partners
- Sulma Hernandez - CERF Kickoff in Sacramento
- Grant Status and Activity Update
- Project Modification
- Logic Model Sample
- Partner Engagement/Stakeholder Mapping
 - Partner Collaboration Sheet
- Upcoming Meeting Dates
- Questions/Comments



CERF Kickoff in Sacramento Highlights



Important Planning Phase Dates

Now

- CCF executed the contract with the State on March 1, 2023
- The HRTC will need to review guidelines proposed by the state
- Drafting and finalizing RFP Scopes for review and input by Sub-Committees
- Roles and responsibilities have been finalized and the formal governance structure document is in progress
- CERF Kickoff in Sacramento for all Regions March 22-23

May 1, 2023

- Awardees must submit the **Planning Phase Plan within the first two months** of the Planning Phase (SFP Page 60) . Includes:
- The structure of the HRTCs, including the **governance structure (roles only) (OE & Governance will need collaboration coupled with input from the HRTC)**. Final governance structure due within 90 days.
- The plans with estimated expenses for the following: Convening the Collaboratives and an inclusive regional planning process and developing a comprehensive plan for the region's High Road transition. This includes a plan and timeline for **conducting the analyses and developing the roadmap** defined in this solicitation.

August 31, 2023

- Awardees must submit the **Regional summary report** (SFP Page 12/60) . The Regional Plan includes two parts:
- Part 1 - **Snapshot of socio-economic conditions (Research)** in the region: mapping stakeholders, providing a regional summary, and conducting analyses.
- Part 2 - **Establish a forward-looking economic development and transition roadmap.**

CERF Project Modification Request Summary

- The CERF Team (EDD, GO-Biz, OPR) has reviewed our project proposal and identified required modifications to our project. As a recipient of the CERF Planning Grant, we are required to complete the items as requested.
- We will have 90 days from today – **June 6, 2023** - to complete and submit the required documentation. Failure to complete the modifications by the requested timeline may result in an invoice hold.

Project Amendment	Action Requested
<input type="checkbox"/> Governance Structure	Clarify the method or process by which decisions will be approved by the Steering Committee (e.g. majority voting, supermajority voting, consensus, etc.)
<input type="checkbox"/> Partnership Agreement Letter	Resubmit complete versions, Page 23-24 of CERF Planning Phase SFP for requirements. The LA Regional Consortium letter is missing: <ul style="list-style-type: none"> • A contact person, their role, and email address or phone number • A signature from an authorized signatory representative of the entity
<input type="checkbox"/> Partnership Agreement Letter	Resubmit complete versions, Page 23-24 of CERF Planning Phase SFP for requirements. The Hub Cities Consortium letter is missing: <ul style="list-style-type: none"> • A signature from an authorized signatory representative of the entity.
<input type="checkbox"/> HRTC Table Building	If the HRTC has not finalized a process, explain how and when the HRTC will select one.

CERF Project Modification Requests

Project Amendment	Action Requested
<input type="checkbox"/> Outreach and Engagement Plan	Must add language to show accessibility so that community can access this information.
<input type="checkbox"/> Workplan	Update to reflect new dates: <ul style="list-style-type: none">• Planning Phase Report – due 2 months after the contract execution date (May 1, 2023)• Regional Summary Part 1 – due August 31, 2023• Regional Summary Part 2 – due June 30, 2024

CERF Project Modification Requests Continued

Logic Model Sample

Input	Activities	Outputs	Outcomes
HRTC Convener and Fiscal Agent	Informing engaging, and empowering diverse communities. <ul style="list-style-type: none">• Surveys of stakeholders	Inclusive Planning Tables	An Inclusive and equitable economic plan
HRTC members	Building effective partnerships <ul style="list-style-type: none">• Focus groups	Governance Structure	
Inter-Agency Leadership Team	Conducting Planning Meetings <ul style="list-style-type: none">• Quantify # of partnerships, the type and participation over time		
The Mark Evaluation Team	Participating in Evaluation Meetings		

LA HRTC Partners

The LA County CERF HRTC has convened and/or facilitated the support of 300 plus organizations/community partners and 400 plus individual stakeholders throughout the county which includes representation from all entities identified in the SFP.

Please visit:

www.laedc.org/CERF

for the full list of partners.

Labor organizations

Employers, businesses, and business associations

Grassroots and community-based organizations, community organizers, and community members

Government agencies

Economic development agencies

Philanthropic organizations

Education and training providers

Workforce entities

Environmental justice organizations

Worker centers

Disinvested communities

California Native American Tribes

Other regional stakeholders capable of contributing to the success of the project.

Stakeholder Analysis

Stakeholder Count

3/23/23

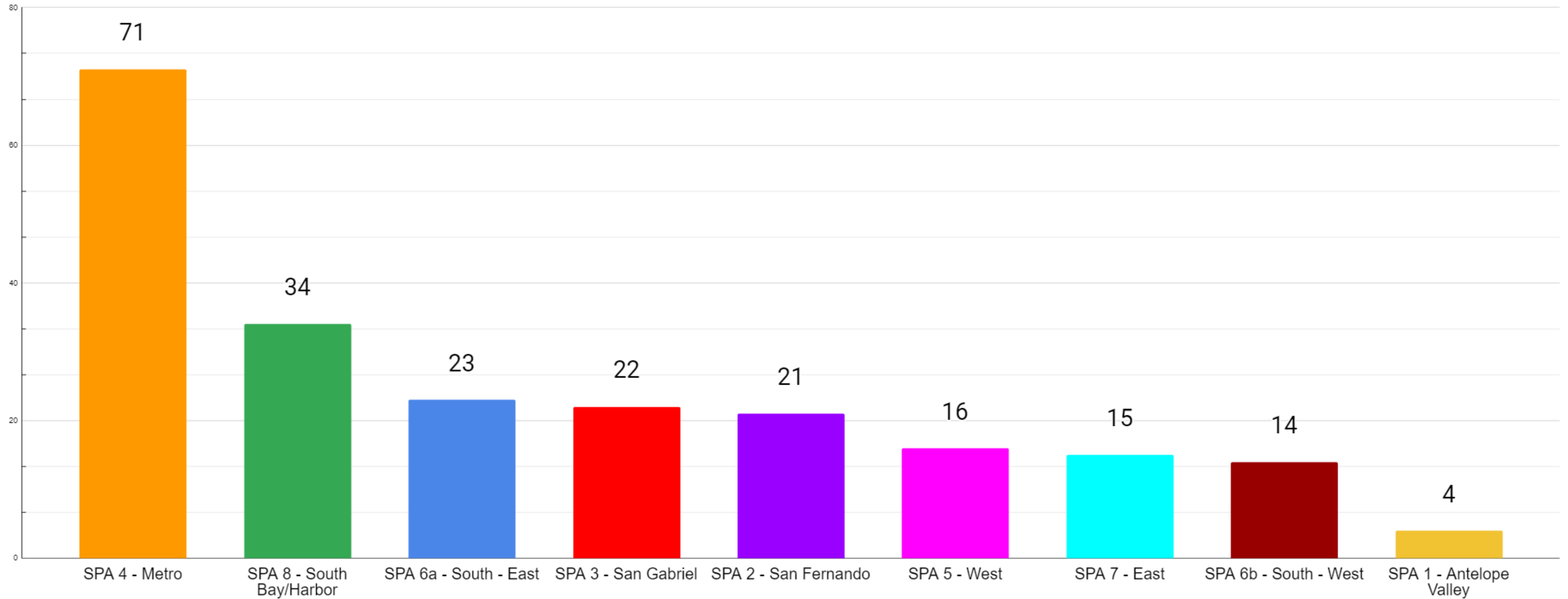
Number of Organizations Officially Onboarded (CERF Collective Partnership Agreement submitted)

212

Total Number of Organizations Engaged

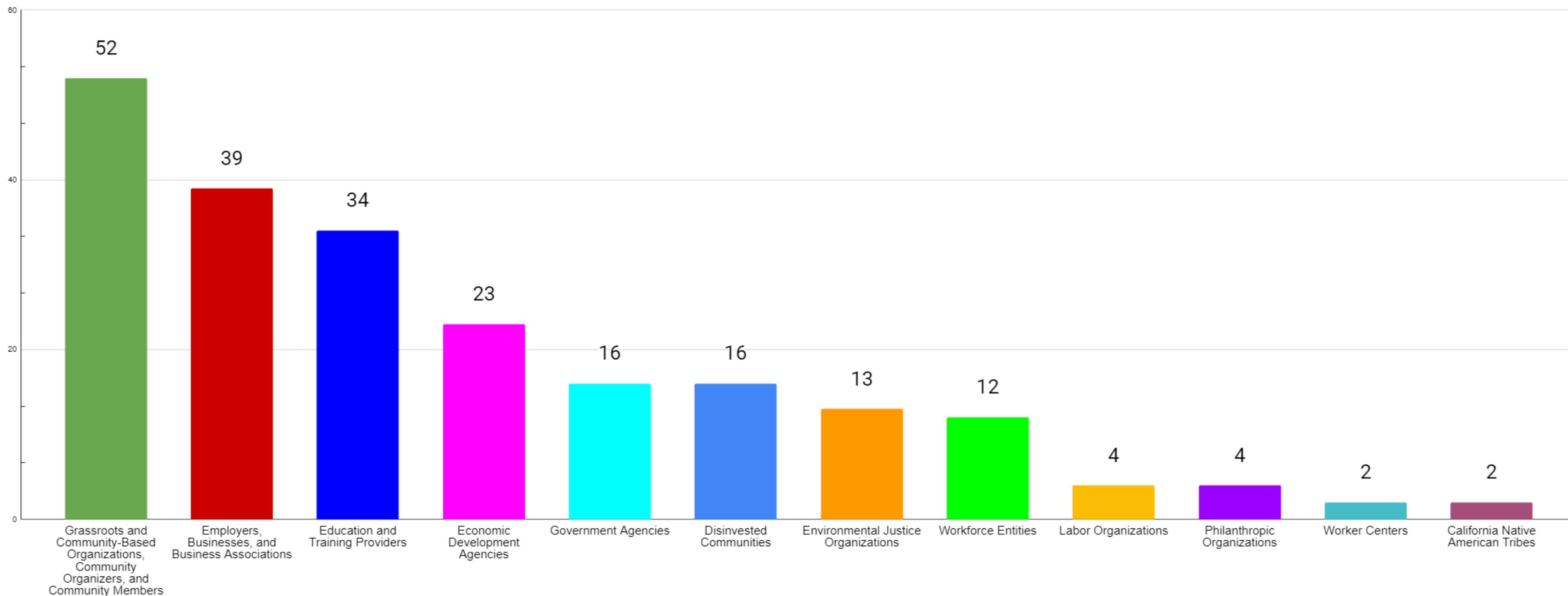
338

Geographic Breakdown of LA HRTC Members by SPA



Based on the location of each organization's headquarters as reported by each onboarded member

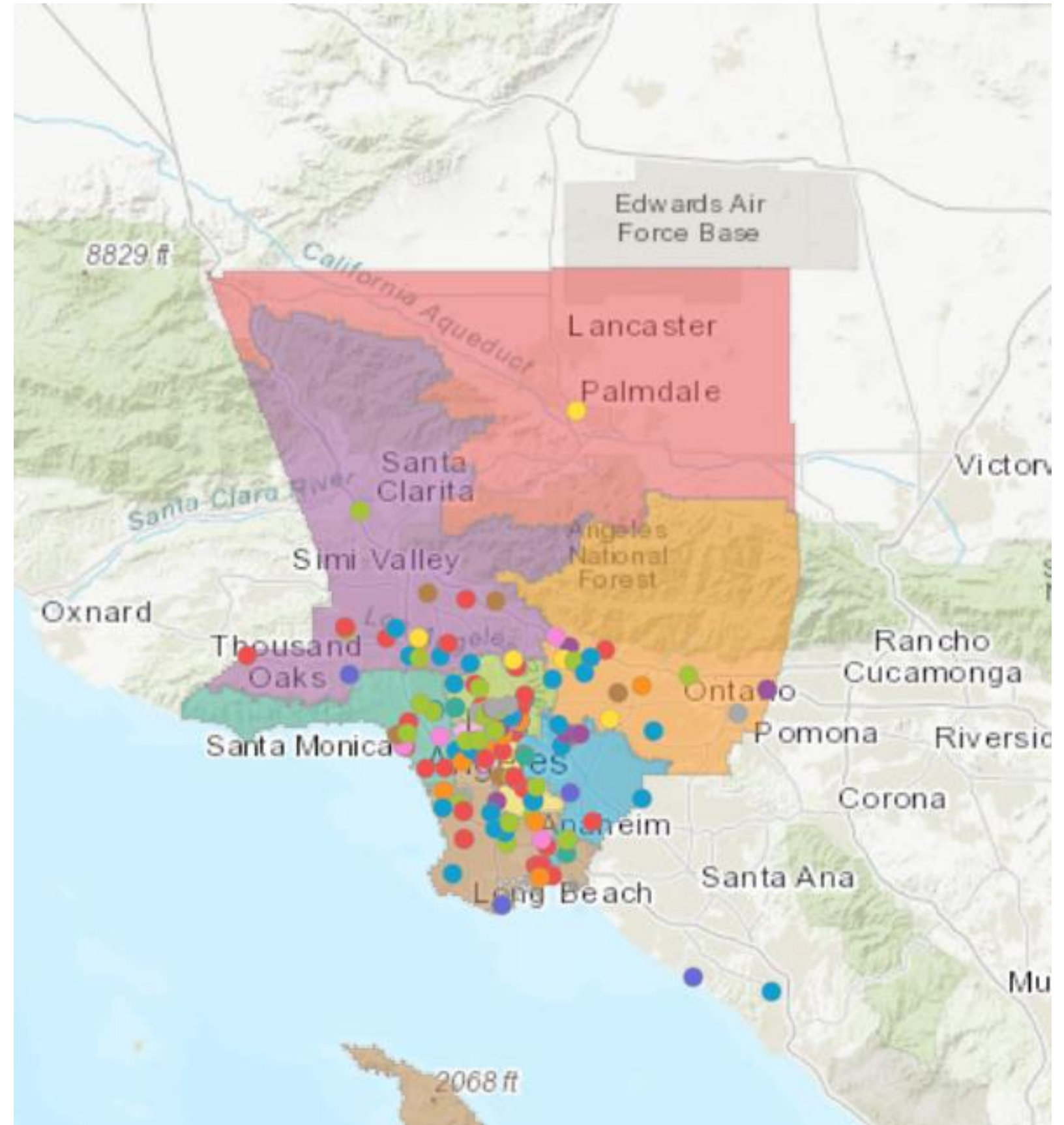
Number of Each Entity Type Within the LA HRTC



Based on the primary stakeholder category of each organization as reported by each onboarded member

- Stakeholder entity type refers to the entities the LA HRTC is mandated by the State to include balanced representation from for reporting purposes

Stakeholder GIS Map





LA HRTC Partner
Collaboration
[Click here](#)

Become a Member of the LA HRTC



- Submit an Onboarding Form and a CERF Collective Partnership Agreement Letter
- For questions regarding your organization's onboarding status, email CERF@laedc.org

L.A. County CERF HRTC Upcoming Meeting Dates

Outreach & Engagement Committee

- March 29th | 3:00 pm

Governance Committee

- TBD

HRTC Bi-weekly Meeting

- April 7th | 9:00 am



LOS ANGELES COUNTY
ECONOMIC DEVELOPMENT CORPORATION
Collaboratively Advancing Growth and Prosperity for All

Thank you!

For more info, please visit:
www.laedc.org/cerf

Questions can be directed to
cerf@laedc.org.



SCAN ME

