



**LOS ANGELES COUNTY**  
ECONOMIC DEVELOPMENT CORPORATION  
*Collaboratively Advancing Growth and Prosperity for All*

# COMMUNITY ECONOMIC RESILIENCE FUND (CERF) PROGRAM

L.A. County HRTC Meeting

[www.laedc.org/CERF](http://www.laedc.org/CERF)

A large circular graphic with a teal-to-blue gradient background. Inside the circle is a green highway sign with white text that reads 'Los Angeles COUNTY LINE'. Below the sign is a photograph of a city skyline, likely Los Angeles, featuring several tall buildings and palm trees. The sign is mounted on a wooden post, and the city skyline is visible through the circular frame.

**Los Angeles**  
**COUNTY LINE**



# L.A. County CERF HRTC Meeting Agenda

## September 30, 2022

- Welcome and Introductions of new partners
- Grant Status Update
- Timeline Pre- and Post Announcement
- Governance Structure
- Questions Comments Updates
- **Next Meeting: Poll**





# Important Planning Phase Dates noted in CERF SFP

## 24-Hours

- Press Release
- Job descriptions
- The HRTC will need to review guidelines proposed by the state

## Two Months

Awardees must submit the **Planning Phase Plan within the first two months** of the Planning Phase (SFP Page 60) . Includes:

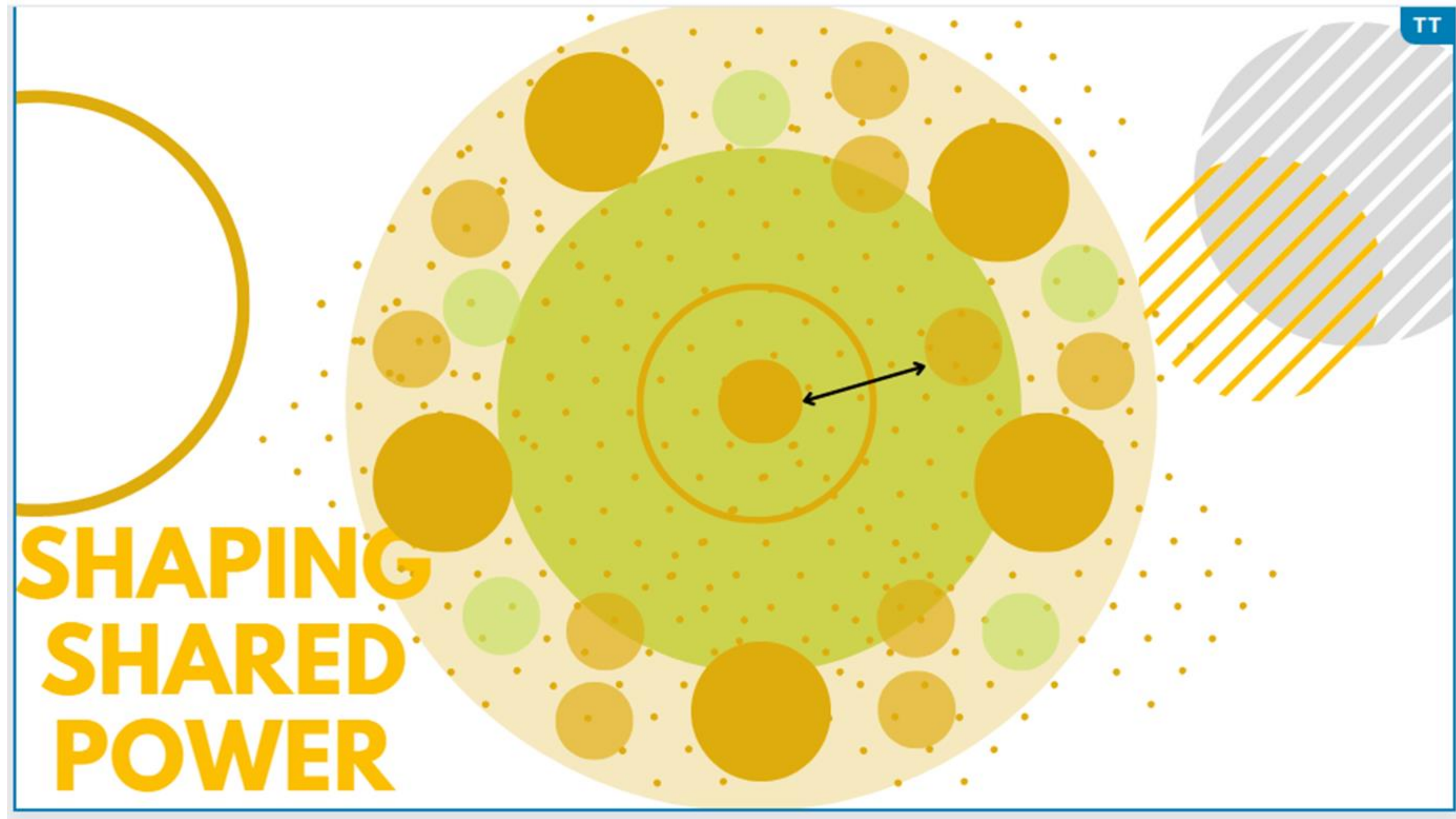
- The structure of the HRTCs, including the **finalized governance structure (OE & Governance will need collaboration coupled with input from the HRTC).**
- The plans with estimated expenses for the following: Convening the Collaboratives and an inclusive regional planning process and developing a comprehensive plan for the region's High Road transition. This includes a plan and timeline for **conducting the analyses and developing the roadmap** defined in this solicitation.

## March 31, 2023

Awardees must submit the **Regional summary report** (SFP Page 12/60) . The Regional Plan includes two parts:

- Part 1 - **Snapshot of socio-economic conditions (Research)** in the region: mapping stakeholders, providing a regional summary, and conducting analyses.
- Part 2 - **Establish a forward-looking economic development and transition roadmap.**

# SHAPING A SHARED/INCLUSIVE GOVERNANCE MODEL



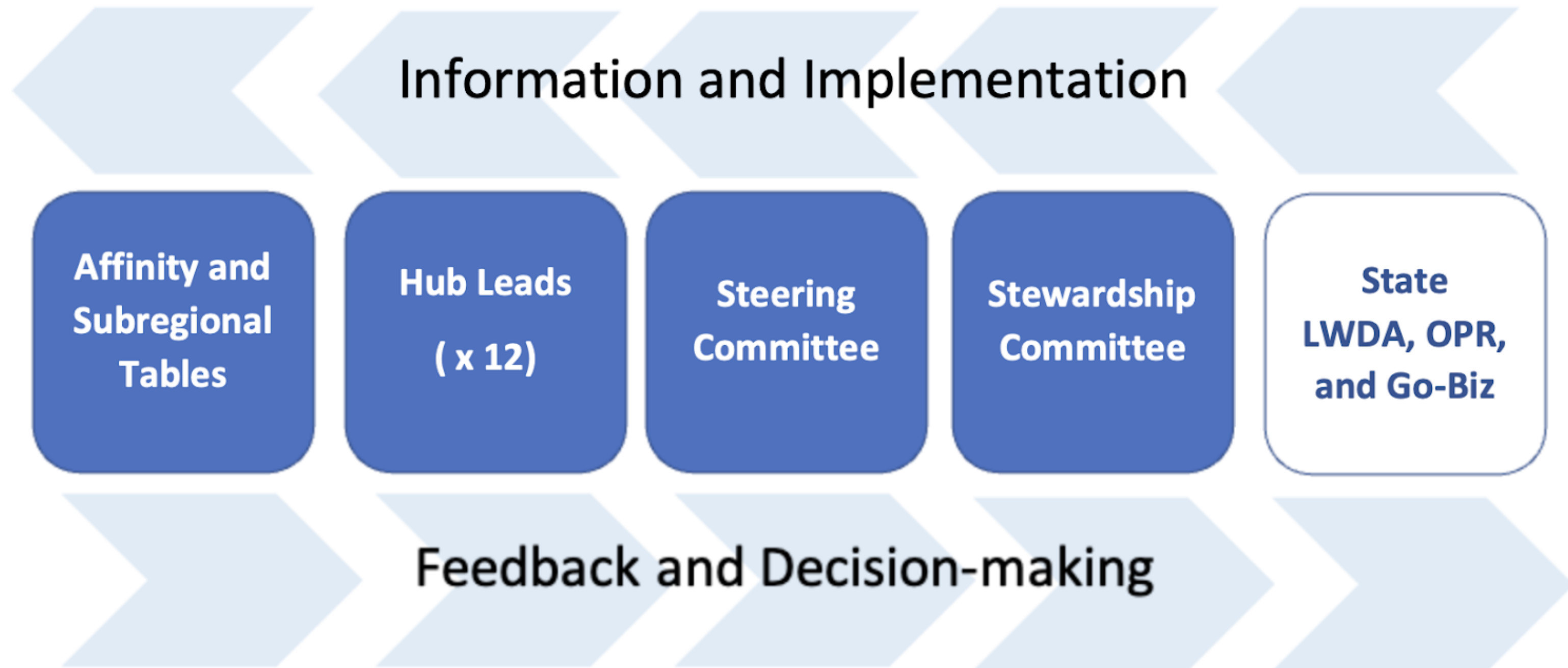
Affinity Hubs & Sub Regional Table Model

OE Committee Plan Mandates:

- Engagement Focused by subgroups not geographies
- 90 CBO Microgrants + 10 Partner Grants
- Geo & Ethnic Planning Forums Post Community Outreach

Youth	Families	Homeless, Veterans, Seniors	Employers and Business	Economic Development	Civic Eng. & Place-Based Coalitions
<ul style="list-style-type: none"><li>• At-Risk Youth</li><li>• Justice Involv.</li><li>• Foster Youth</li><li>• LGBT Youth</li><li>• Opportunity Youth</li></ul>	<ul style="list-style-type: none"><li>• Tribal Family</li><li>• Social Svc Agencies</li><li>• Faith Based</li><li>• Domestic Viol</li><li>• Violence Prevention</li><li>• Single Parent</li></ul>	<ul style="list-style-type: none"><li>• Homeless</li><li>• Veterans Svc Groups</li><li>• Seniors</li></ul>	<ul style="list-style-type: none"><li>• Lg. Business</li><li>• Sm. Business</li><li>• Trade Assoc.</li><li>• Industry Clusters</li><li>• Chambers</li></ul>	<ul style="list-style-type: none"><li>• CDCs</li><li>• Business Improvement Districts</li><li>• Regional EDCs</li><li>• Tribal Agencies</li><li>• Planning Ag</li></ul>	<ul style="list-style-type: none"><li>• Sub-Regional Tables</li><li>• Placed Based Coalitions</li><li>• Social Justice Orgs</li><li>• Faith Based</li></ul>
Underemployed Adults	Labor and Workers	Immigrant	Sustainability	Academia	Institutional & Government
<ul style="list-style-type: none"><li>• Formerly Incarcerated</li><li>• Disabled Adults</li><li>• Mentally Impacted</li></ul>	<ul style="list-style-type: none"><li>• Labors</li><li>• Worker Centers</li><li>• Workforce Dev.</li></ul>	<ul style="list-style-type: none"><li>• Immigrant Rights</li><li>• Undocumented</li><li>• Street Vendors</li></ul>	<ul style="list-style-type: none"><li>• Environ Justice</li><li>• Clean Mobility</li><li>• Green Equity</li><li>• Climate Advocates</li></ul>	<ul style="list-style-type: none"><li>•School districts</li><li>•Community colleges</li><li>•Universities</li></ul> <p><i>no sub-contracts</i></p>	<ul style="list-style-type: none"><li>• Government</li><li>• Elected officials/Cities</li><li>• JPAs</li><li>• COGS</li></ul> <p><i>no sub-contracts</i></p>

# Democratic Governance Structure that Shares Decision-Making







# **Actions Items**

## **Steering Committee Structure and Leads**

- **Engagement Period (\*Goal is to reach up to 500 HRTC Partners) - Poll**
- **Election Process**

# Ongoing Initiatives

## LA CERF Webpage Site Map

Currently developing the site map for the back-end to the LA CERF webpage and exploring different website functions to assist Partners – [Feedback Form](#)

- LA County CERF HRTC
  - LA County HRTC Committees
    - Governance Committee
    - Outreach and Engagement
    - Research and Data Committee
  - LA County HRTC Proposal
    - LA County HRTC Application
  - Meeting Notes
  - Partner Resources
    - CERF Resources
    - Collective Partnership Agree...
    - Templates

## Calendar at a Glance

### UPCOMING MEETINGS

LA County Partners Meeting – **Friday, September 30th 9a – 10a**

Outreach and Engagement Committee – **Wednesday, October 5th 3p – 4p**

To receive a calendar invite, please fill out the [LA County CERF Engagement form](#) or contact [sulaiman.kenyatta@laedc.org](mailto:sulaiman.kenyatta@laedc.org).

\* The updated website will contain an interactive calendar where Partners can view upcoming meetings and register for events.

\* A Video will follow to highlight important information related to the CERF process





**LOS ANGELES COUNTY**  
ECONOMIC DEVELOPMENT CORPORATION  
*Collaboratively Advancing Growth and Prosperity for All*

# Thank you!

For more info, please visit:  
[www.laedc.org/cerf](http://www.laedc.org/cerf)

Questions can be directed to:

