



LAEDC

Monthly Economic Briefing

January 25, 2021



Bill Allen

CEO
LAEDC



Shannon Sedgwick

DIRECTOR
INSTITUTE FOR APPLIED ECONOMICS

Regional Stay Home Order

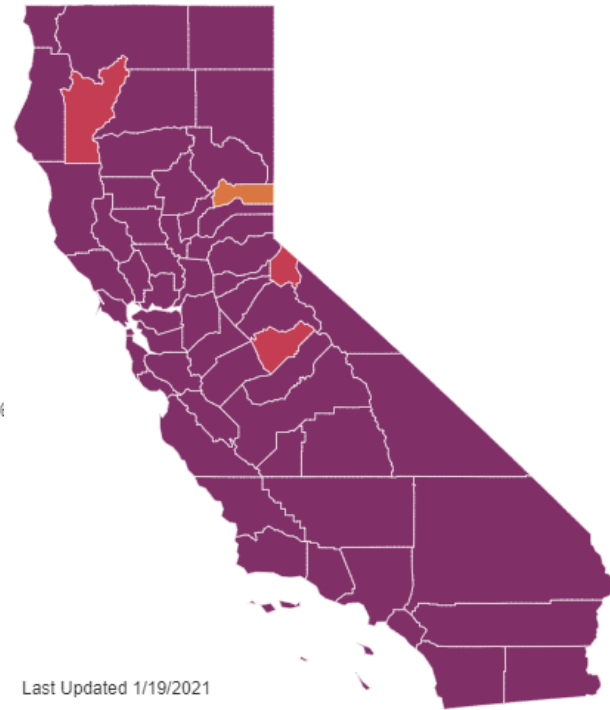


STATEWIDE METRICS

105.4 New COVID-19 positive cases per day per 100K
15.2% Positivity rate (7-day average)
1.5% ICU availability

REGIONAL STAY HOME ORDERS

	Regions	Counties	Population	
No	2	24	3,655,962	9.1%
Yes	3	34	36,473,198	90.9%



STATEWIDE METRICS

105.4 New COVID-19 positive cases per day per 100K
15.2% Positivity rate (7-day average)
4.5% ICU availability

COUNTY RISK LEVELS

	Counties	Population	
Widespread	54	40,093,779	99.9%
Substantial	3	32,266	0.1%
Moderate	1	3,115	0.0%



Last
LAEDC
Webinar
10/19/20

Last Updated 1/19/2021

Last Updated 1/23/2021

Source: California ALL



Vaccine Distribution in LA County

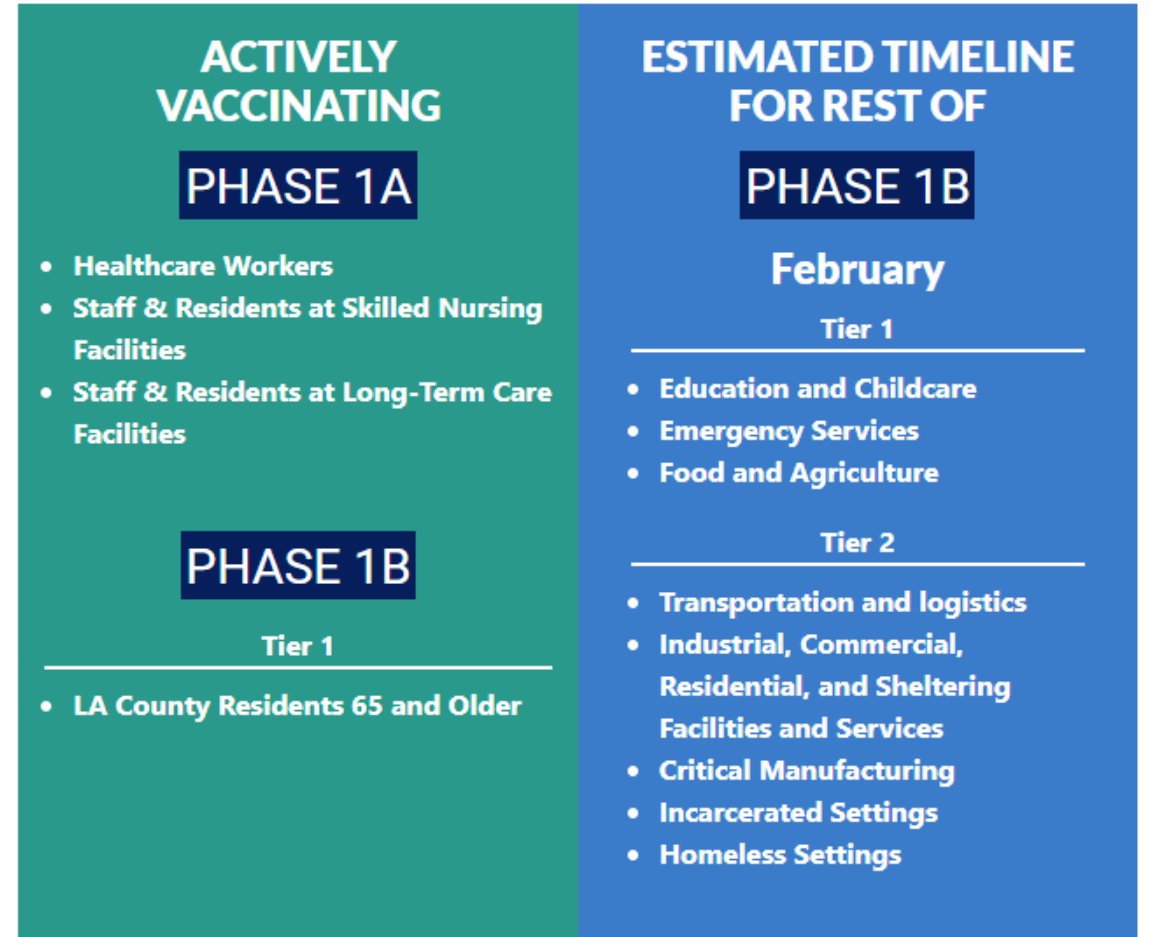
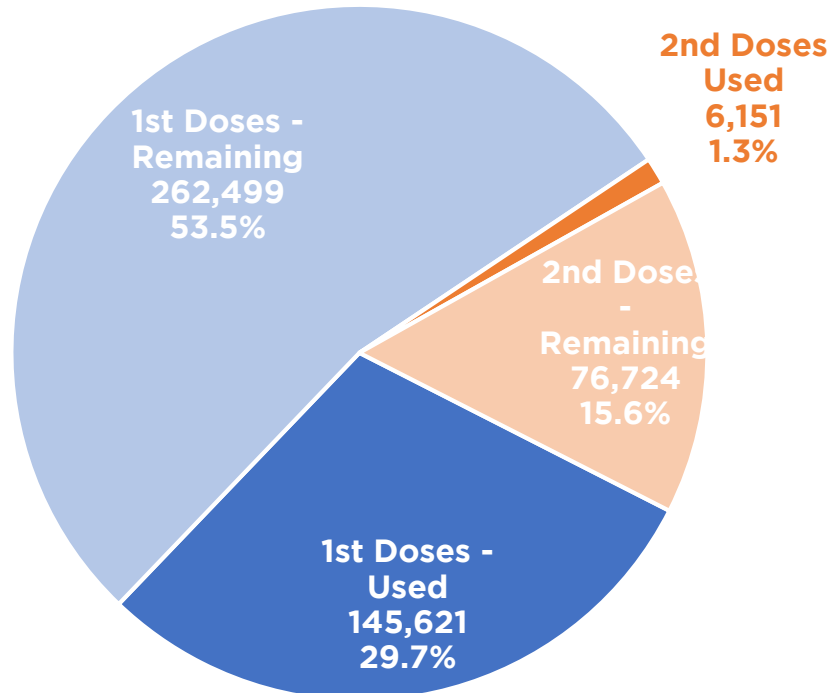
(as of 1/06/21)

Vaccine Dose Orders Received: 490,995

- Expended/ Used as First Doses: 33.6% of 408,120 received
- Expended/ Used as Second Doses: 7.4% of 82,875 received

Vaccine Doses in LA County

(as of 1/06/21)

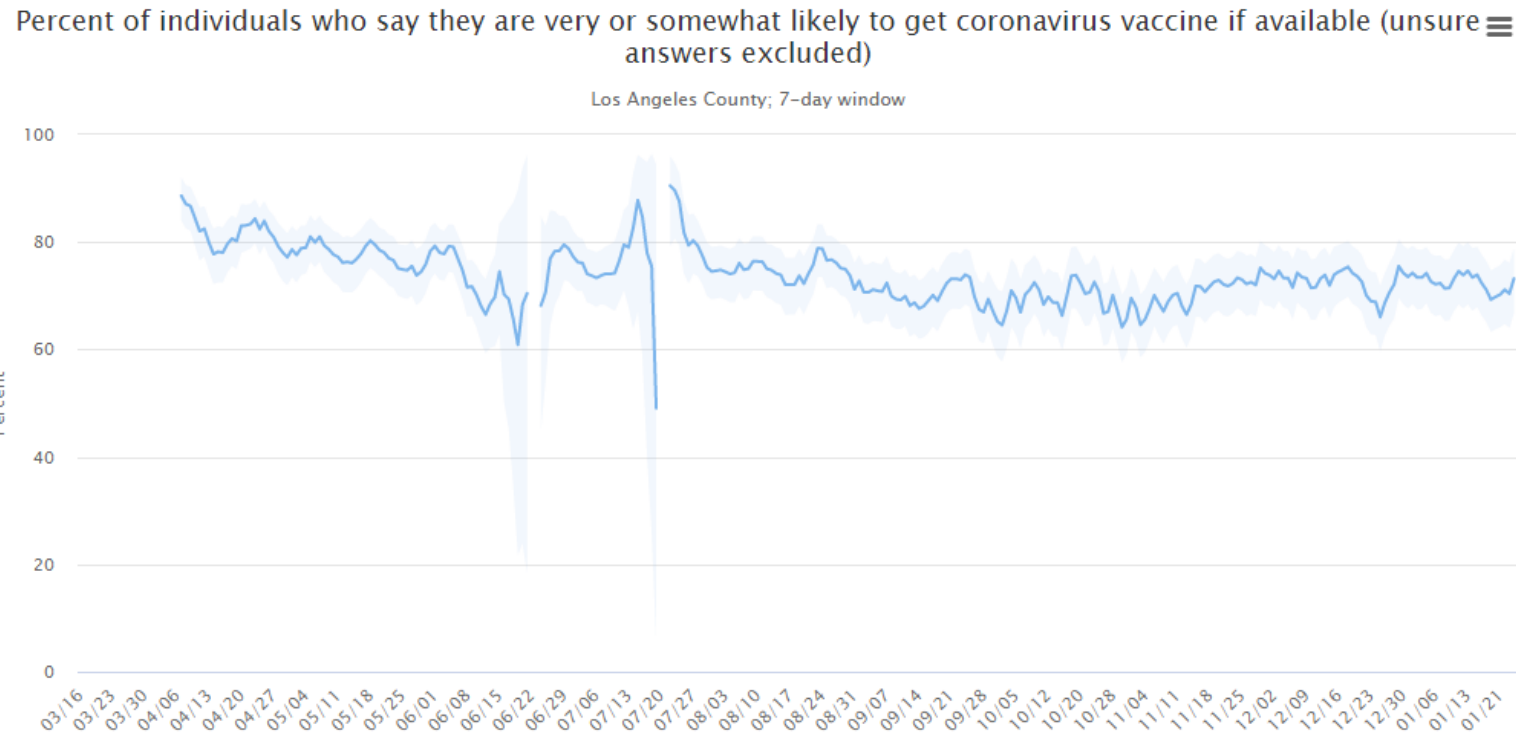


Source: LA County Public Health



Individuals Likely to Get the Vaccine if Available

Percent in LA County who say they are very or somewhat likely

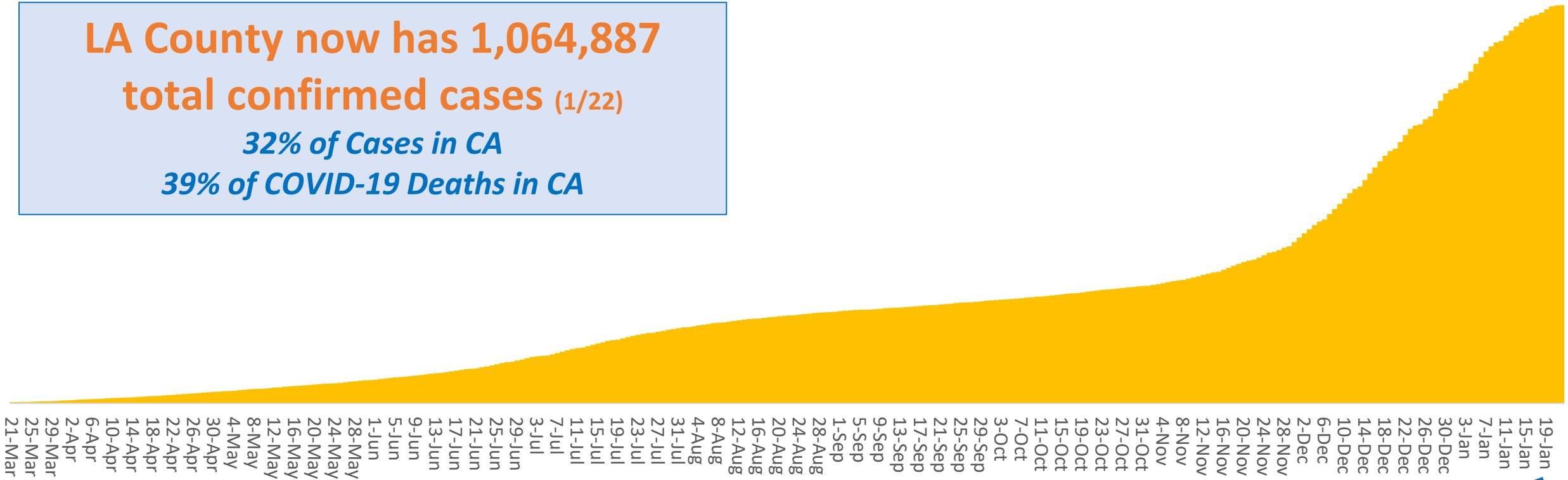


*The colored bands around each line represent margins of error (95% confidence intervals). To view point estimates, ranges, and sample sizes (N) for a given day, hover your mouse over your data point of interest. You can also click on the data labels below the graph to hide and un-hide specific trend lines. The survey questions, topline data, and data files are available at <https://uasdata.usc.edu/covid19>. For a special note on the data shown between March 16 and April 6, see the [Survey Methods](#) tab.

Confirmed COVID-19 Cases

Total Cases Reported in LA County (1/22)

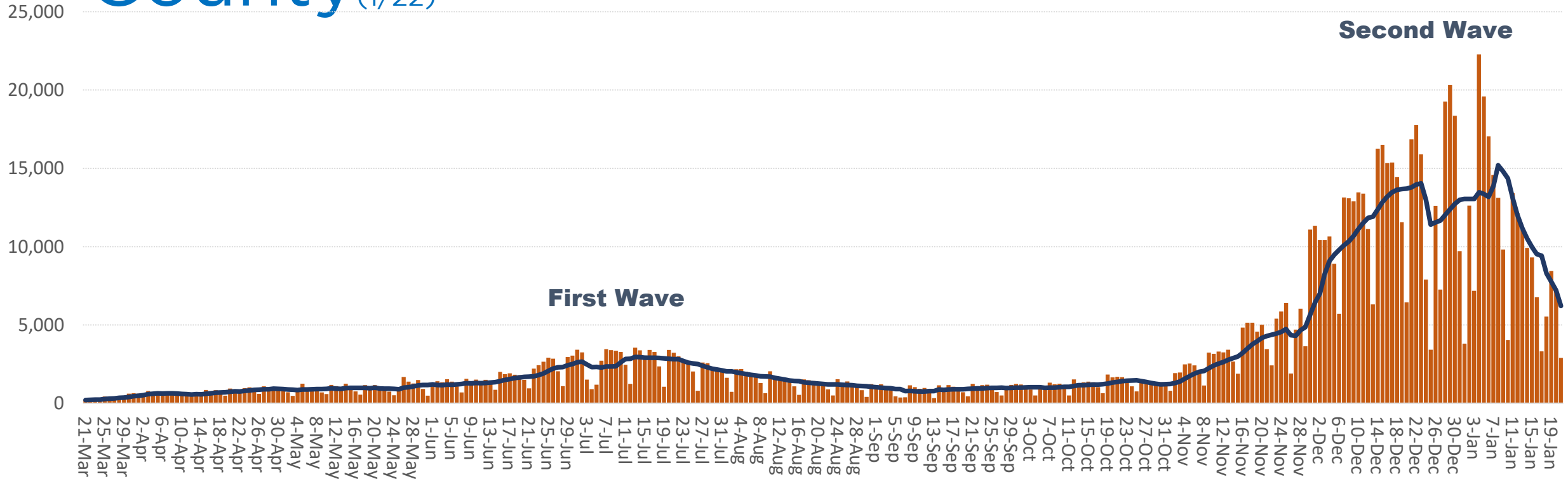
LA County now has 1,064,887 total confirmed cases (1/22)
32% of Cases in CA
39% of COVID-19 Deaths in CA



Source: LA County



New Daily Cases of COVID-19 in LA County (1/22)



Testing 7-Day Daily Average - Target: 15,000 Actual: 92,819 7-day average (1/22)

Testing Positivity Rate: 14.20% 7-day average (1/22)

Daily Deaths 7-Day Average – Target: No increase over past 14 days Actual: Up 11%

Daily Hospitalizations 3-Day Average – Target: No increase over past 14 days Actual: Down -11%

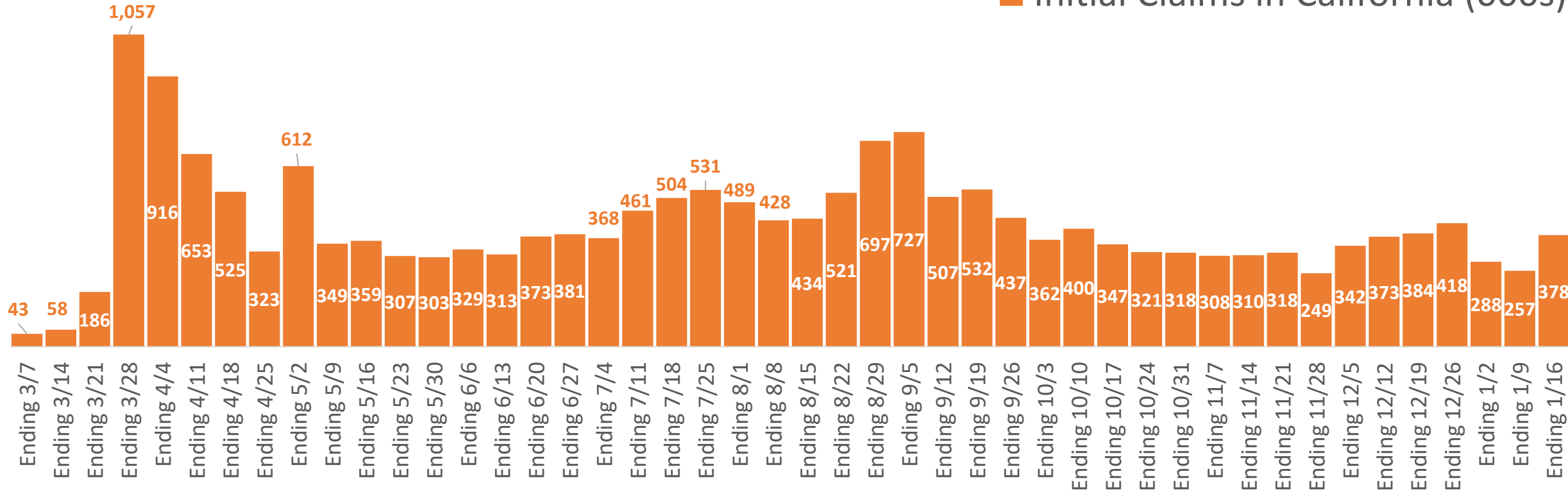
Current Hospitalizations: 3-Day Average: 7,196



Source: LA County

Unemployment Insurance Weekly Claims in CA

■ Initial Claims in California (000s)



CA Stay at home order issued March 19th

- Claims processed through the pandemic reached close to 19.5 million, including
- Extra federal stimulus payment of \$300 started December 27th
- Total unemployment benefits paid to workers through the pandemic reach **\$114 billion**

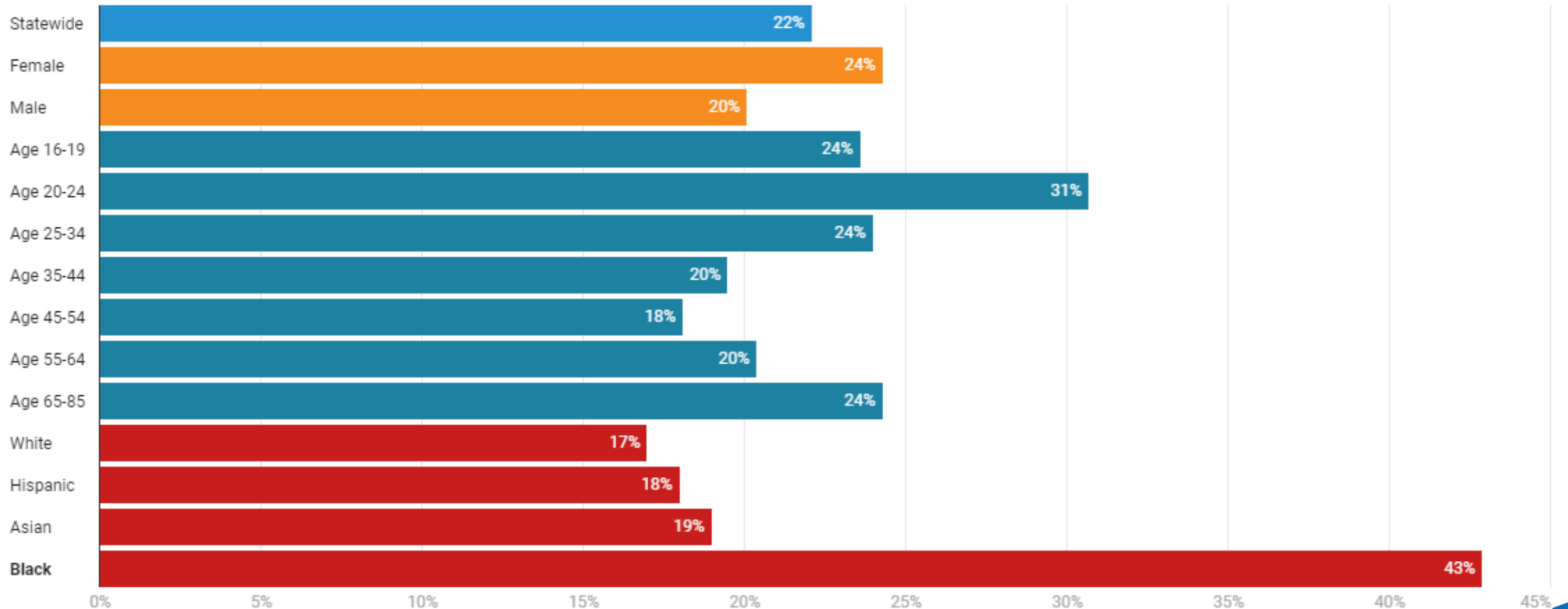


Disparate Impact by Race Remains Evident

UI claims filed from mid-March to week ending Nov 14th as a share of labor force

% of Labor Force Certifying for UI Benefits For the Week Ending November 14th

(Includes PUA)



This figure shows the estimated number of individuals certifying for UI benefits for unemployment experienced in the week ending November 14th. It is not the number of payments certified in that week, which may include retroactive claims. We have adjusted the raw counts in order to account for certifications which have not yet been processed. (See report for more details)

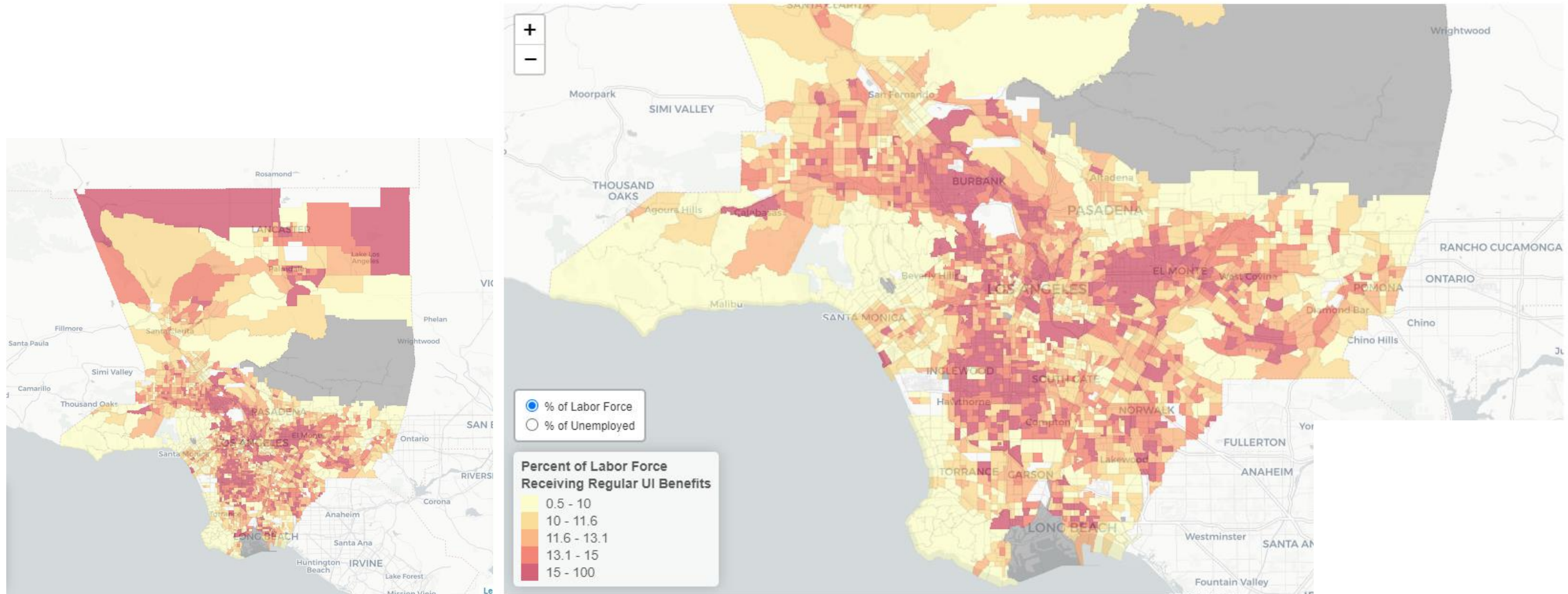
Source: CA Policy Lab



Number of UI Claimants at the neighborhood level

Number of UI Claimants in June/July as a Share of the Labor Force

Los Angeles County: June/July Claims



Notes: Percent of labor force or unemployed receiving benefits are averages over June and July CPS weeks. Recovery Index uses more recent data from October, as described in the report.

December 2020 Employment in Los Angeles County

Unemployment Rate December 2020

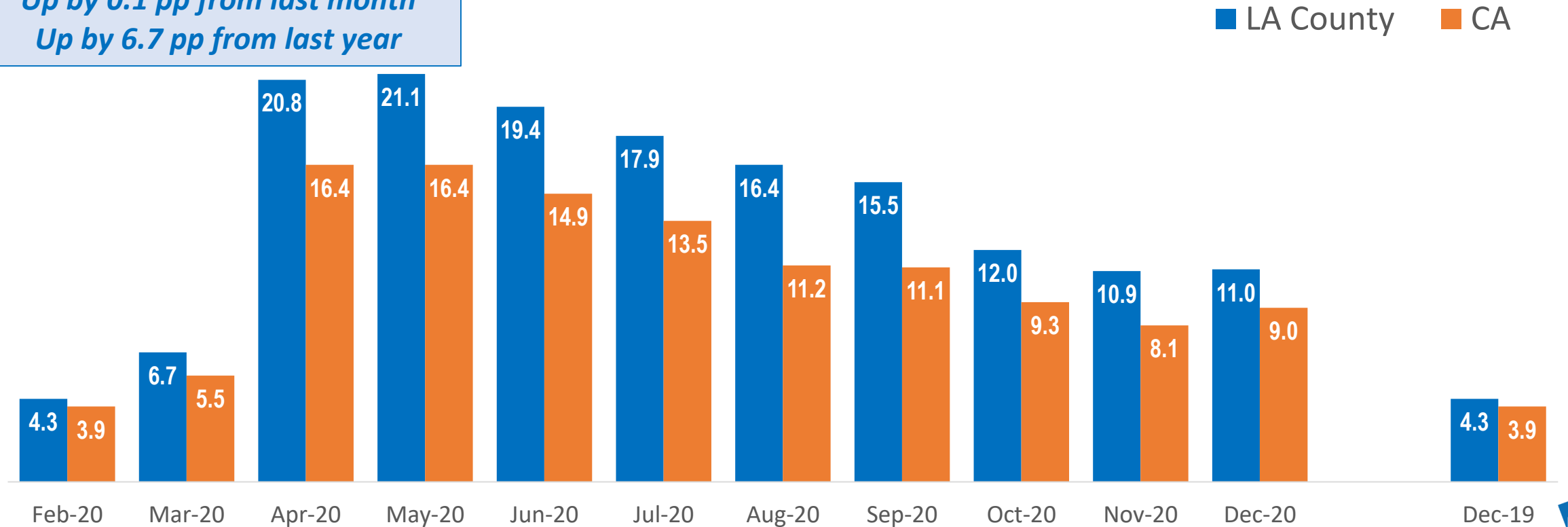
LA County

Unemployment Rate:

Up by 0.1 pp from last month

Up by 6.7 pp from last year

Unemployment Rate (SA)



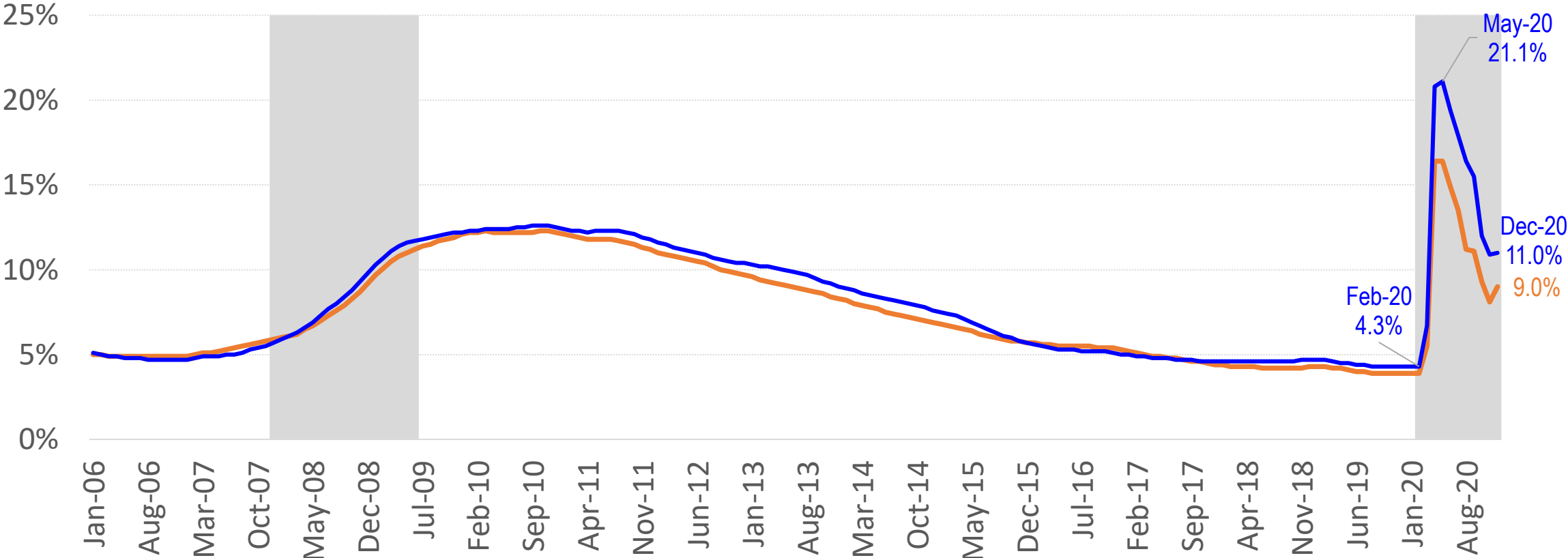
Source: CA EDD



Monthly Unemployment Rates

SA, Jan 2006 – December 2020

Recession CA LA County



Source: BLS



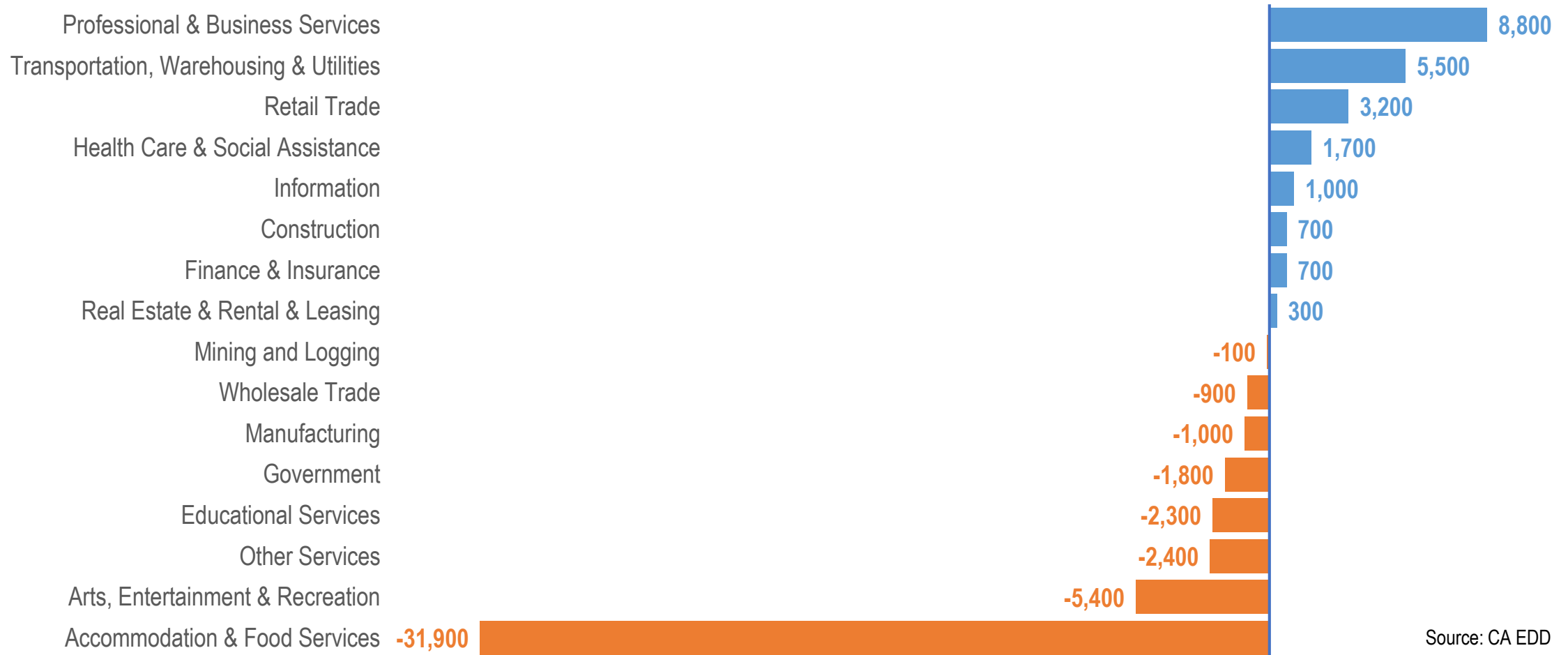
Monthly Change in the Unemployment Rate

Monthly Percentage Point Change in LA County's Unemployment Rate (SA)



Monthly Change in Payroll Employment by Sector Los Angeles County

Month-Over-Month Change in Jobs by Industry, December 2020 (NSA)

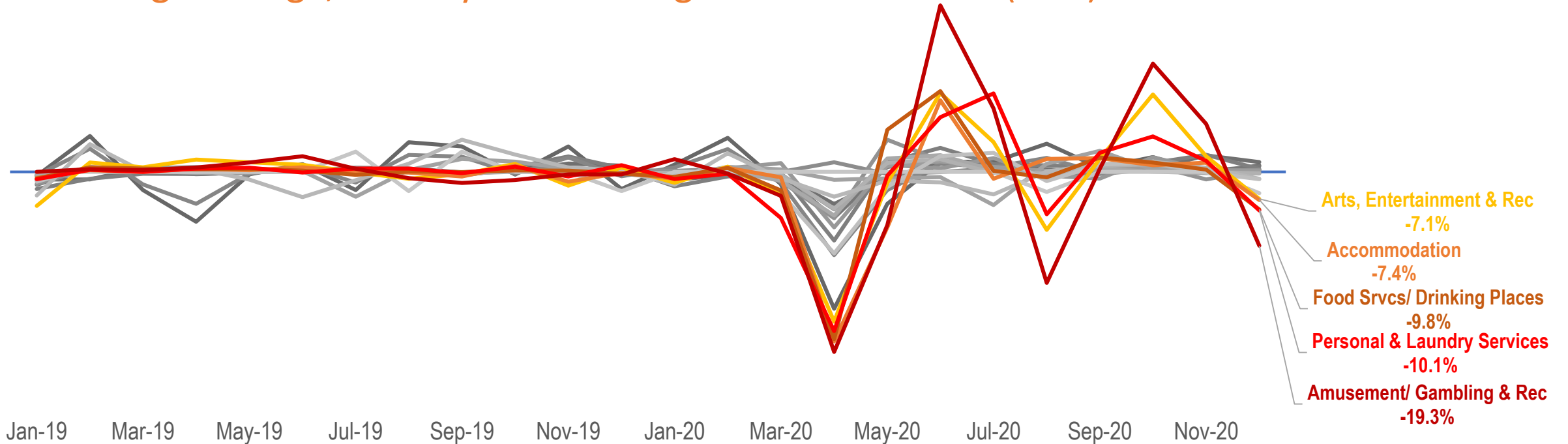


Source: CA EDD



Month-Over-Month Change in Payroll Employment by Sector Los Angeles County

Percentage Change, January 2019 through December 2020 (NSA)



- Jan-19 Mar-19 May-19 Jul-19 Sep-19 Nov-19 Jan-20 Mar-20 May-20 Jul-20 Sep-20 Nov-20
- Transportation, Warehousing & Utilities — Motion Picture & Sound Recording — Professional & Business Services — Retail Trade
- Information — Finance & Insurance — Construction — Real Estate & Rental & Leasing
- Health Care & Social Assistance — Government — Manufacturing — Wholesale Trade
- Educational Services — Other Services — Mining and Logging
- Accommodation — Food Svcs/ Drinking Places — Personal & Laundry Services — Arts, Entertainment & Rec
- Amusement/ Gambling & Rec

Source: CA EDD



Yearly Change in Payroll Employment by Sector Los Angeles County

Year-Over-Year Change in Jobs by Industry, December 2020 (NSA)

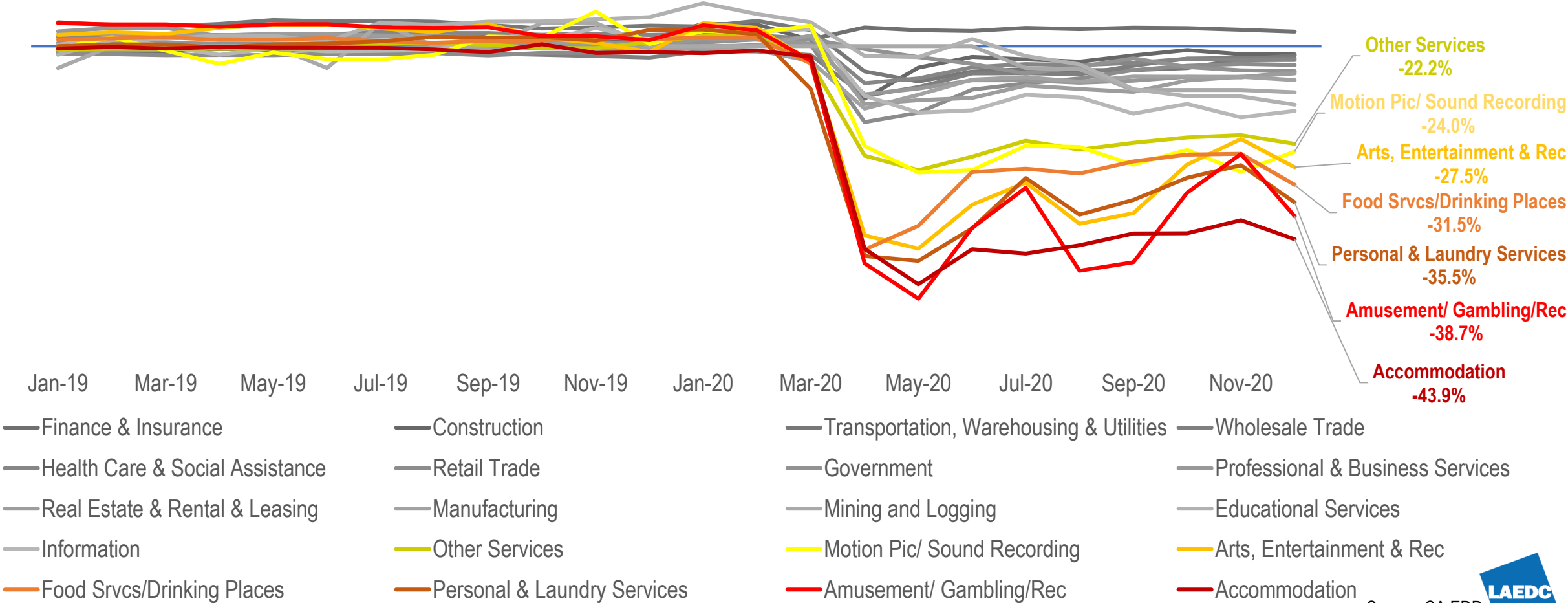


Source: CA EDD



Year-Over-Year Change in Payroll Employment by Sector Los Angeles County

Percentage Change, January 2019 through December 2020 (NSA)

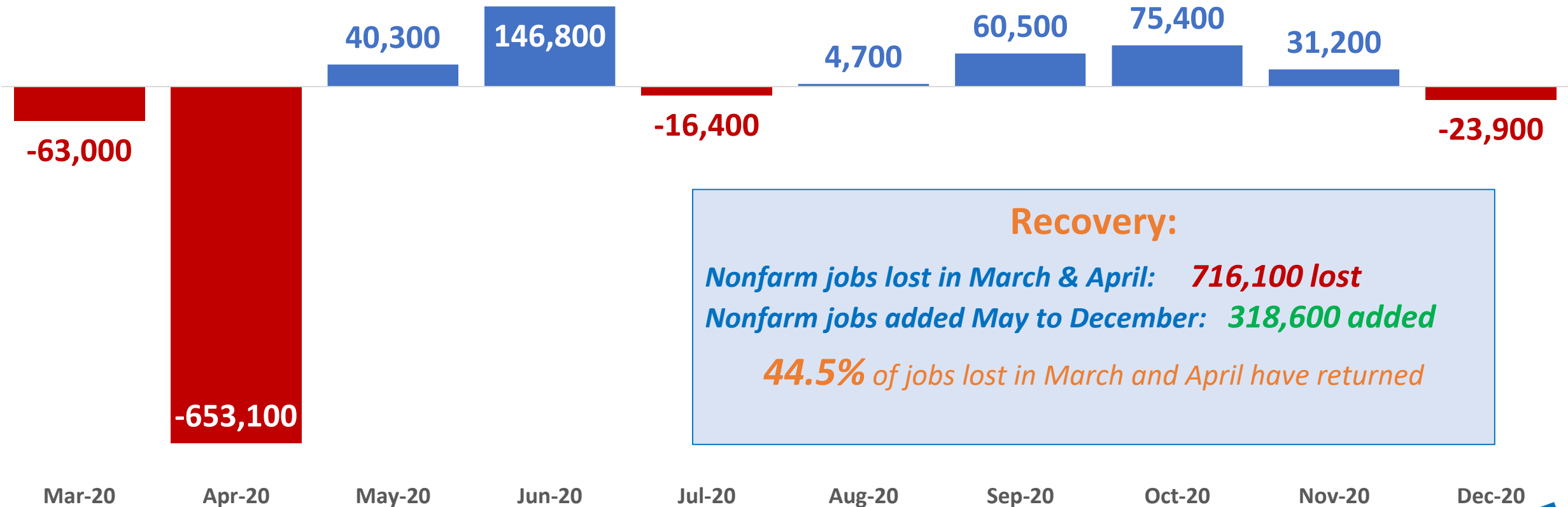


Source: CA EDD



Monthly Change in LA County Payroll Employment

Month-over-month change in nonfarm employment

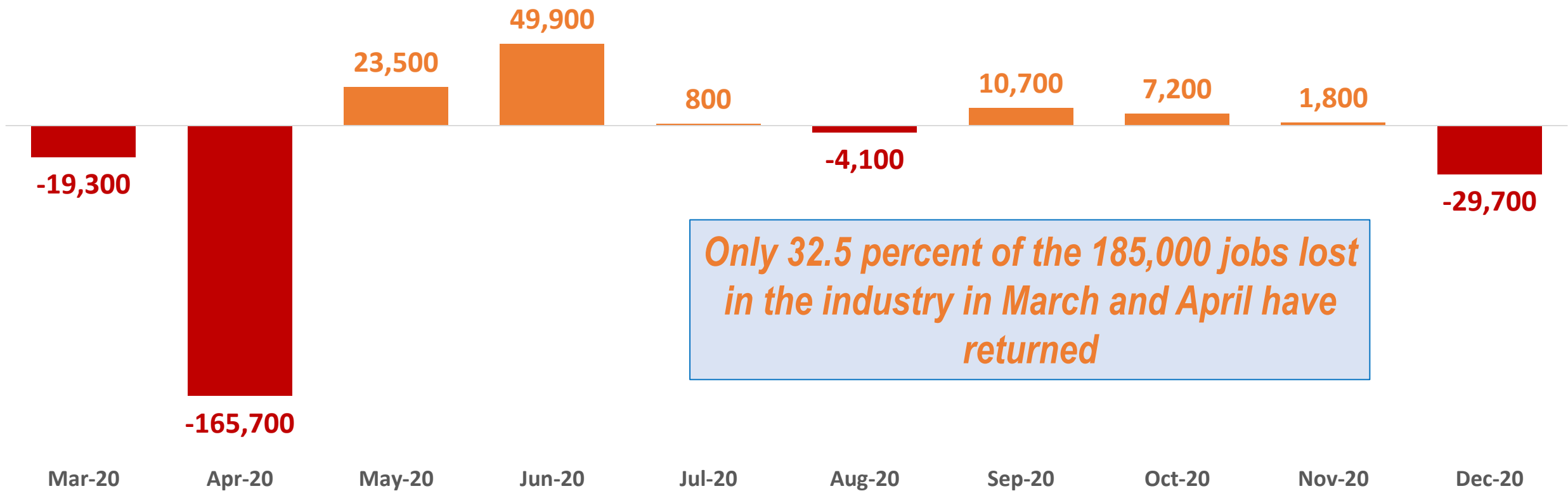


Source: EDD



Monthly Change in LA County Payroll Employment

In the Food Services & Drinking Places Industry



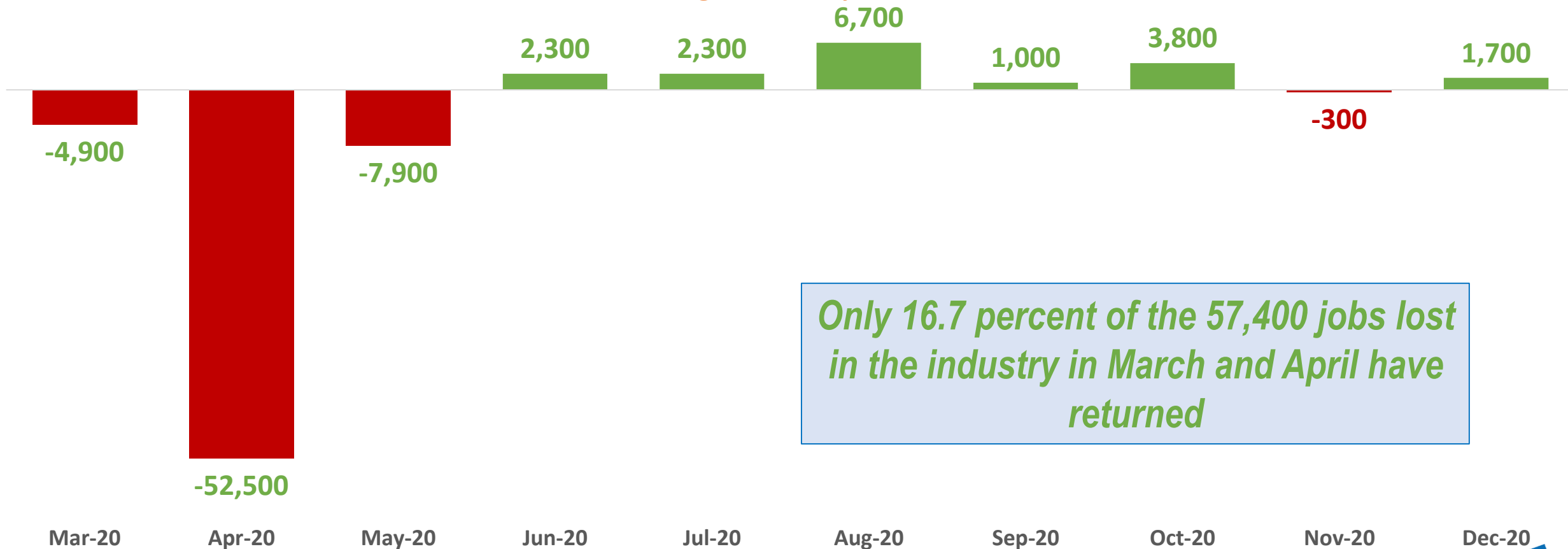
Only 32.5 percent of the 185,000 jobs lost in the industry in March and April have returned

Source: EDD



Monthly Change in LA County Payroll Employment

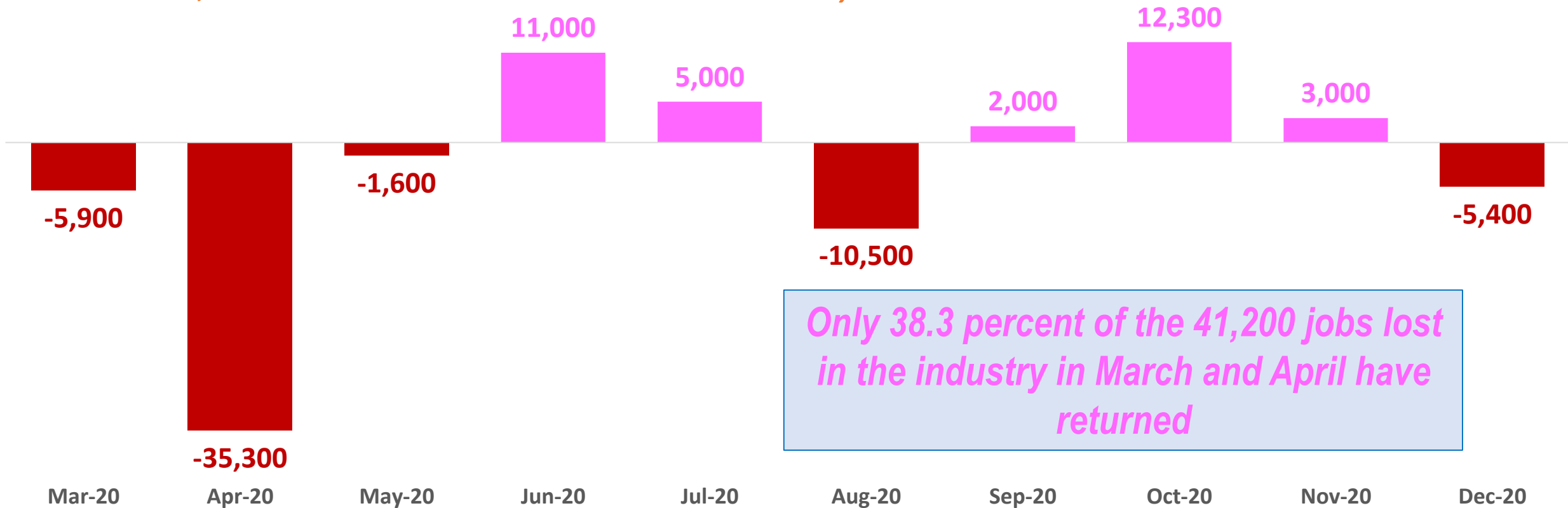
In the Motion Picture and Sound Recording Industry



Only 16.7 percent of the 57,400 jobs lost in the industry in March and April have returned

Monthly Change in LA County Payroll Employment

In the Arts, Entertainment and Recreation Industry



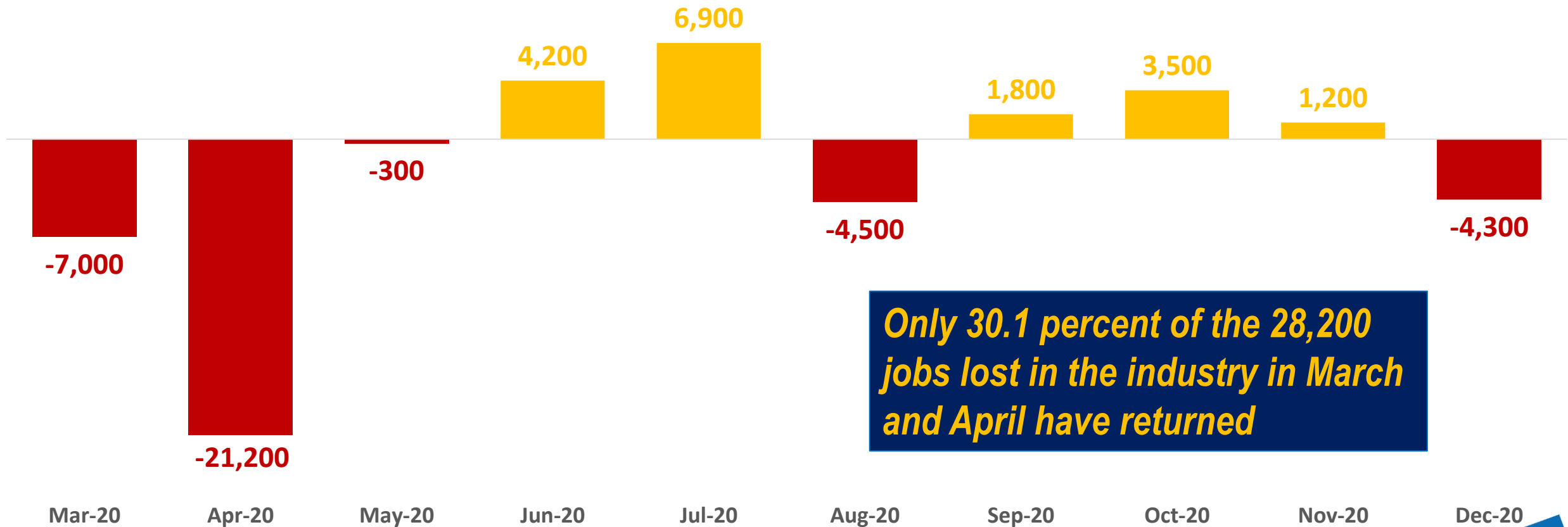
Only 38.3 percent of the 41,200 jobs lost in the industry in March and April have returned

Source: EDD



Monthly Change in LA County Payroll Employment

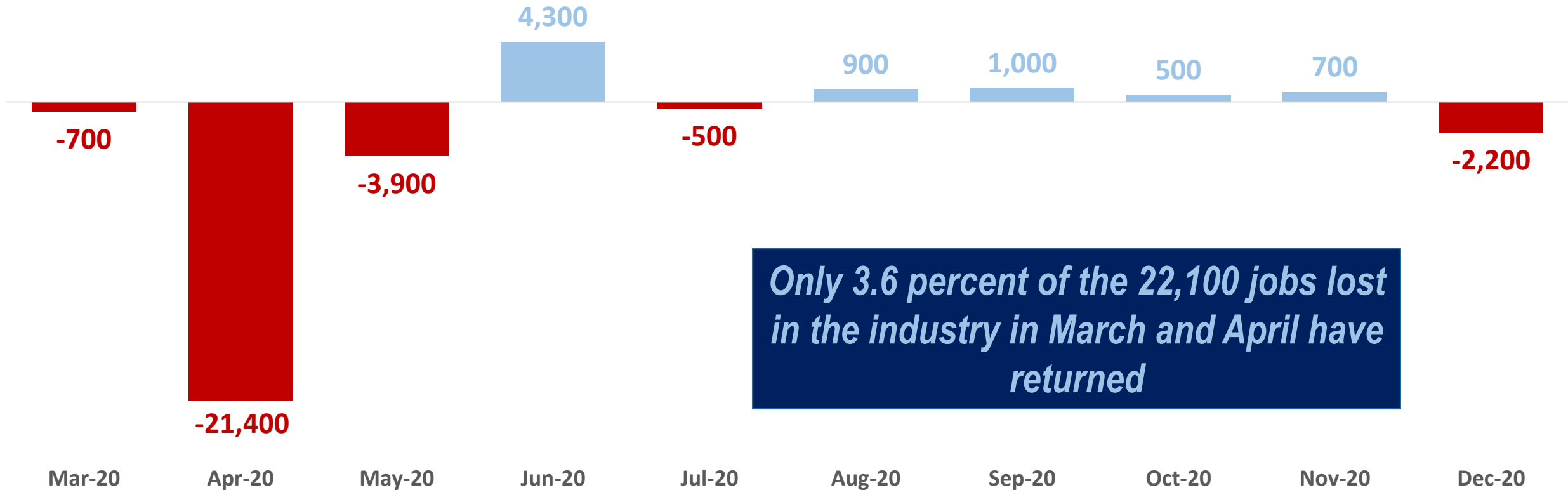
In the Personal and Laundry Services Industry



Only 30.1 percent of the 28,200 jobs lost in the industry in March and April have returned

Monthly Change in LA County Payroll Employment

In the Accommodation Industry



Only 3.6 percent of the 22,100 jobs lost in the industry in March and April have returned

FINAL THOUGHTS



QUESTIONS



LAEDC's ANNUAL Economic Forecast



Amy Liu

Vice President and Director

Brookings Metropolitan Policy Program



Bruce Katz

Founding Director

Nowak Metro Finance Lab at Drexel University

Thank you!

- Next LAEDC Economic Briefing:
February 22, 2021 at 11:00 AM PST
- Visit the LAEDC COVID-19 Response page for additional resources at <https://laedc.org/coronavirus/>.
- Do you have questions you would like answered on these webinars? Please send to shane.cullen@laedc.org.