

LAP3

HORIZONS 32K  
STRATEGIC  
PLAN

# Collaborative Approach to Transforming Systems for Opportunity Youth in Los Angeles

PRESENTED BY



L.A. OPPORTUNITY  
YOUTH COLLABORATIVE



UNITE LA  
Education Innovation Through Collaboration



# WHO ARE OPPORTUNITY YOUTH?

---

Youth ages 16-24 who are not in school or working, or who are at high risk of disconnection due to their involvement in the homeless, child welfare, or justice systems.



# WHO IS THE OYCC?

- **Los Angeles Opportunity Youth Collaborative (OYCC):**  
Improving outcomes for opportunity youth by:
  - Building governance structures to ensure accountability and progress
  - Aligning with partners and resources across education, workforce, housing, and social services
  - Advocating for policies & investments that create lasting, equitable opportunities



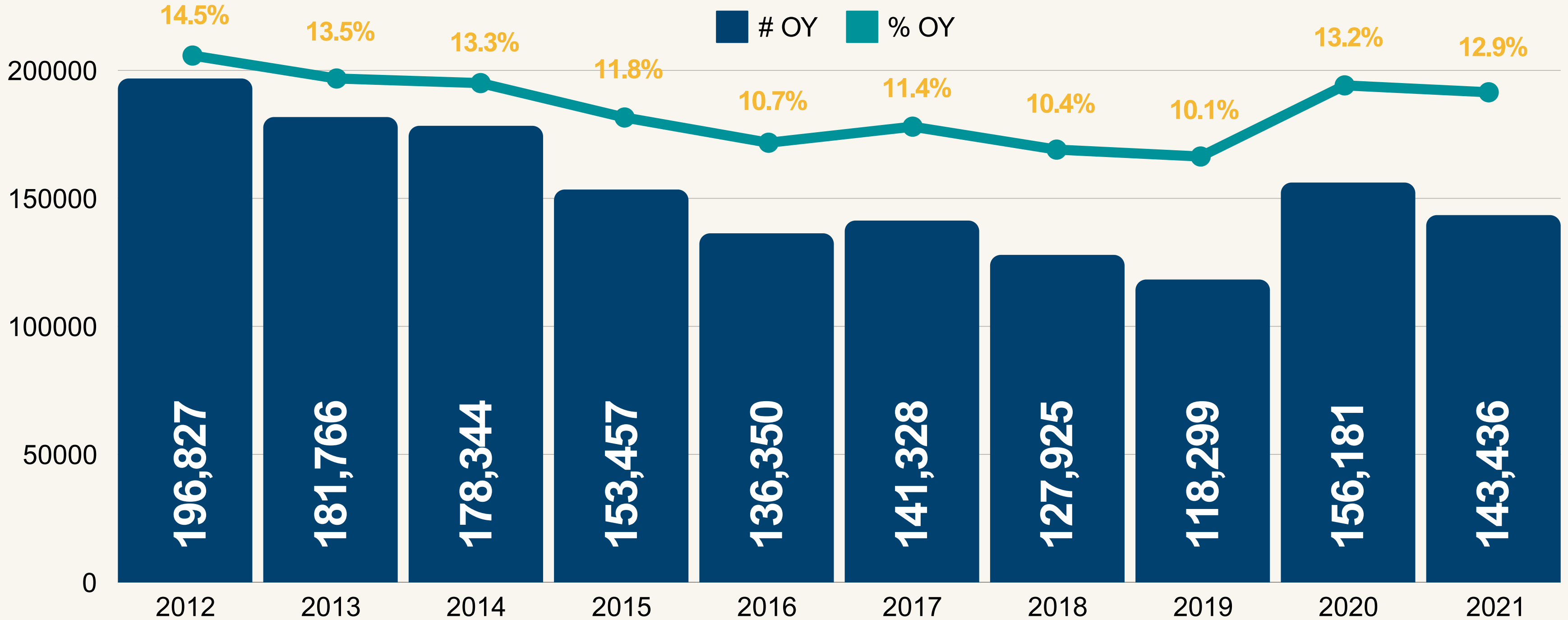


# WHAT IS HORIZONS 32K?

---

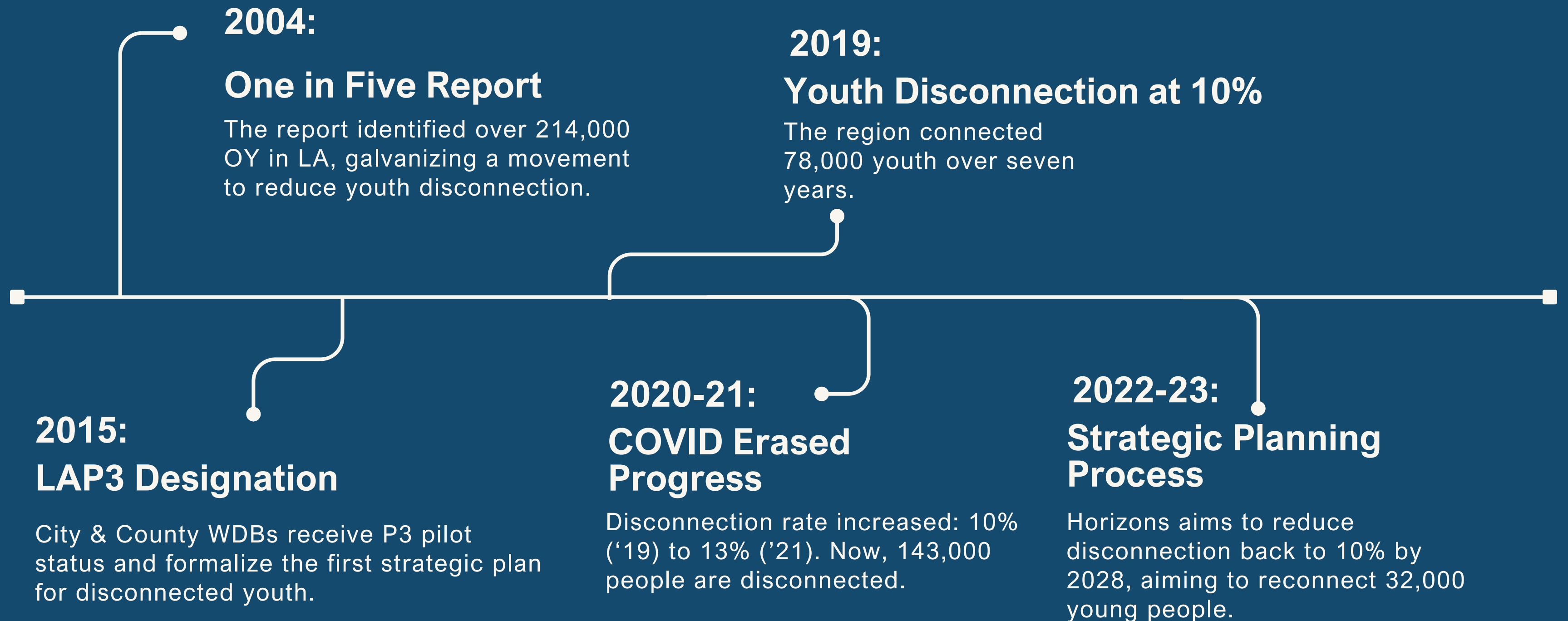
Horizons 32K is a collaborative, regional strategic plan developed by a multi-sector coalition dedicated to addressing the needs of opportunity youth (OY) and reducing youth disconnection

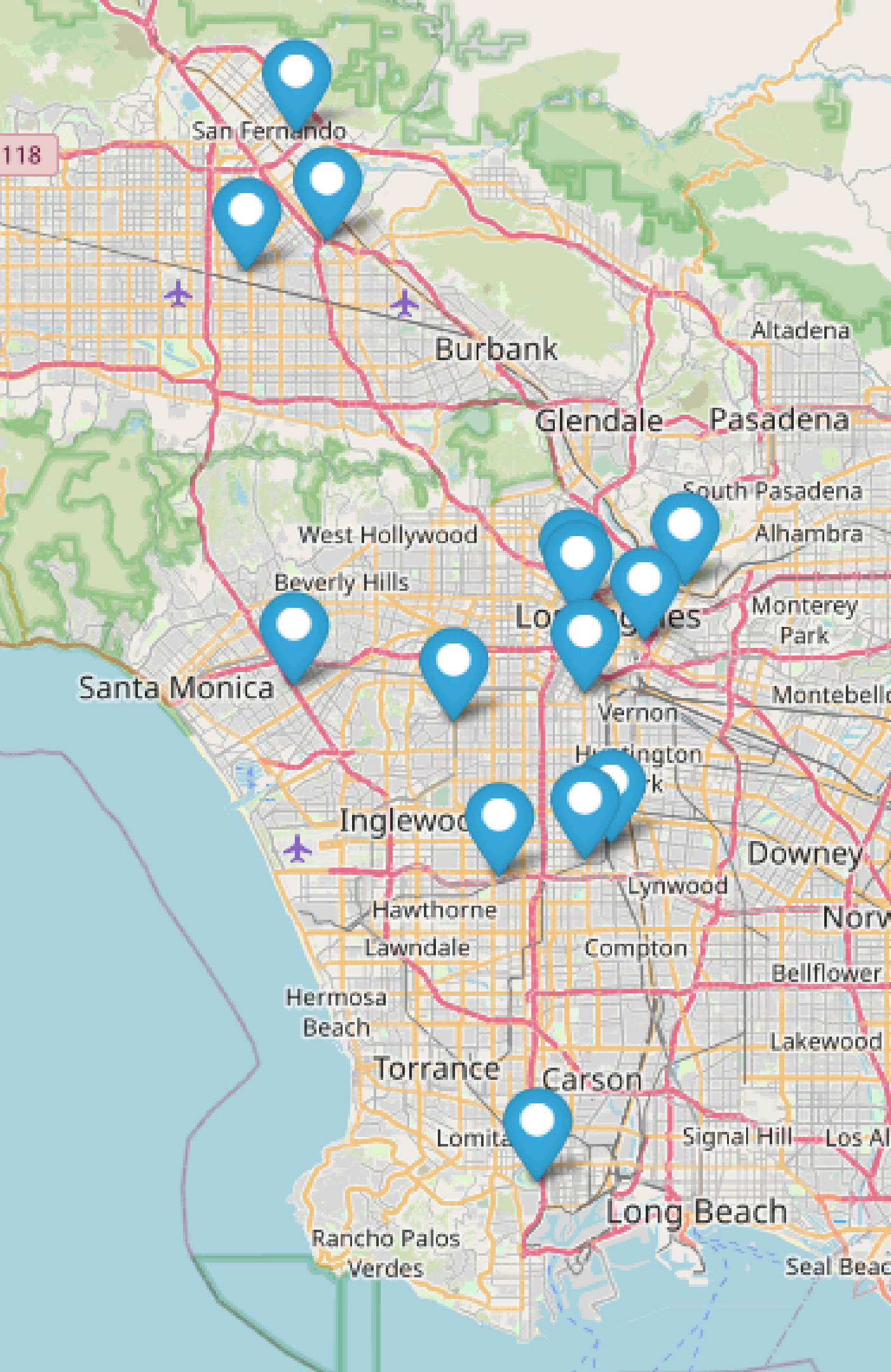
# DISCONNECTION RATE BY YEAR: 2012-21



# HISTORY BEHIND THE HORIZONS 32K PLAN

---





# CITY OF LOS ANGELES

## YOUTHSOURCE CENTER SYSTEM

---

**What is the YouthSource Center System?**

*What services are provided?*

- Occupational Skill Training
- Unpaid/Paid Work Experience/Career Exploration
- Alternative Secondary School
- Study Skills Training
- Supportive Services
- Follow-up Services

# EWDD + LAUSD CO-LOCATION GOALS

---

Goal 1: Increase access to career pathways in high-wage occupations



Youth persist through traditional education pathways (LAUSD PSA) and access alternative education/training pathways (LAUSD DACE)

Goal 2: Support the system goal of 70% co-enrollment into Career and Technical Education programs



Youth have better guidance to education and training programs available to them, with better alignment to their career aspirations

## Student Support and Attendance Services -Pupil Services and Attendance YouthSource City Partnership Overview

### LAUSD PSA Counselor Staffing:

14 YouthSource PSA Counselors (City), 3 American Job Center of California PSA Counselors (County), 1 Lead PSA Counselor, 1 LAP3 PSA Counselor, and 1 Coordinator.

### PSA Counselors are:

- Masters Level (Social Work or School Counseling)
- Hold a Pupil Personnel Services Credential (PPSC)
- Hold a Child Welfare and Attendance Credential (CWA)
- Other
- Licensed Marriage and Family Therapist
- Licensed Clinical Social Workers



### Role/Responsibilities:

- Educational Assessments
- Link and refer to services
- Outreach
- Serve as a liaison
- Trainings (CWA topics)
- Work permits

### 10 Year Partnership:

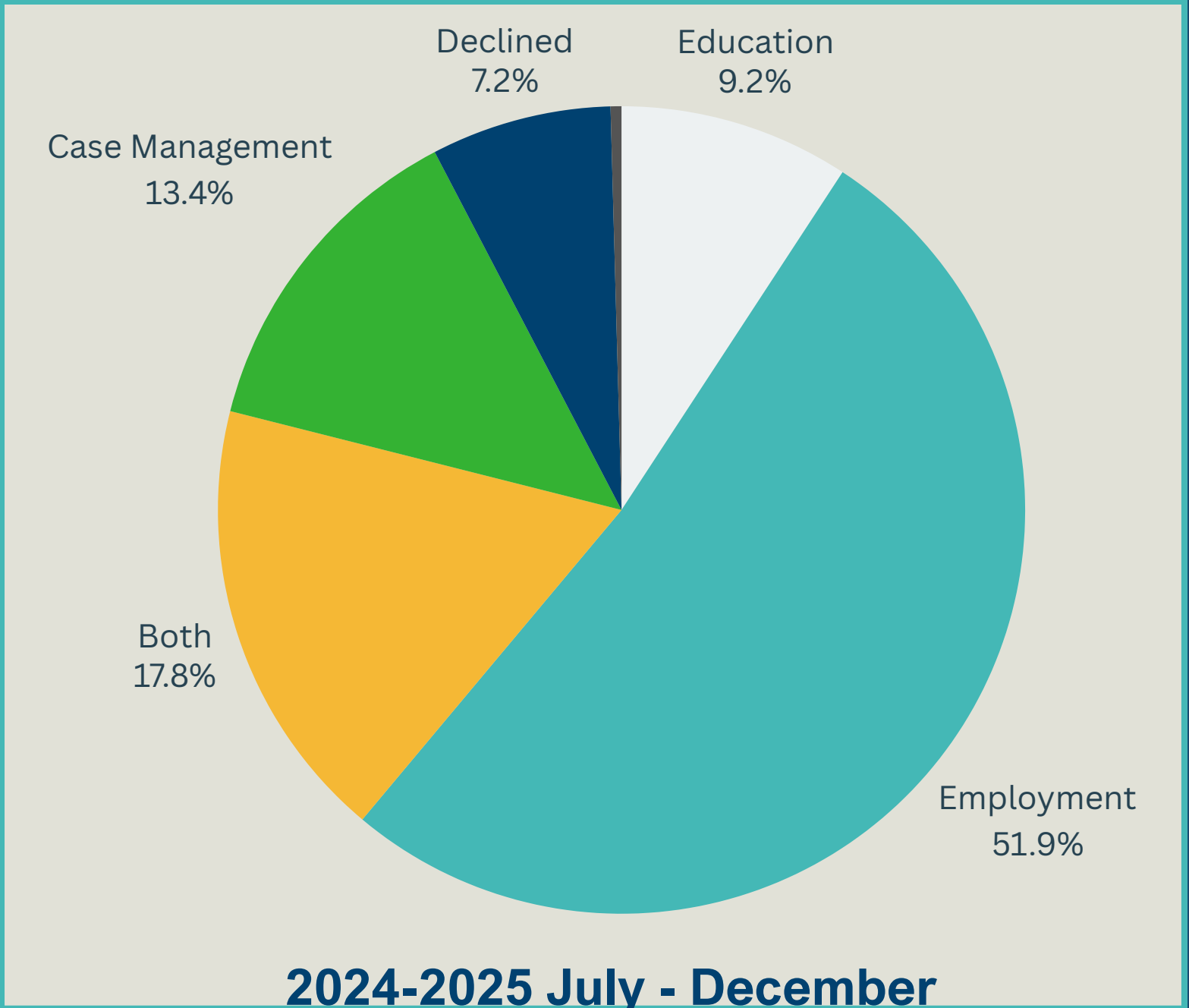
- Assessed & provide work permits to over 49,000 youth
- Identified & supported 24,000 disengaged Youth
- Re-Engaged 17,000 youth to school, employment, or both



# STUDENT SUPPORT AND ATTENDANCE SERVICES -PUPIL SERVICES AND ATTENDANCE YOUTHSOURCE CITY PARTNERSHIP RE-ENGAGEMENT AND ENGAGEMENT

## PSA Child welfare and Attendance Services Connection and Engagement

- Education
- Career Exploration
- Employment
- System Navigation
- Family/ Youth Engagement
- Case Management



2024-2025 July - December

Educational Assessments = 2286

Disconnected = 1149

Work Permits = 621



# LOS ANGELES PERFORMANCE PARTNERSHIP PILOT (LAP3) HORIZONS 32K

**LAUSD and OYC:** Collaborate to coordinate capacity building among service providers.

- Interest identified by yearly survey
- Year long training plan

**LAP3 Regional meetings:** Collaborative opportunity to integrate services, establish partnerships, and strengthen community networks.

- Services presentations
- Trainings
- Case consultation
- Resource sharing

**LAP3 Network Trainings:**

- Suicide Prevention: The Question, Persuade, Refer Model
- Navigating TAY Housing
- Department of Mental Health 101: Accessing Mental Health Services
- LGBTQ+ Youth and the Workplace



# LAUSD- DIVISION OF ADULT AND CAREER EDUCATION (DACE)

In partnership with the City of Los Angeles, Employment and Workforce Development Department (EWDD) Presents

---

## The YouthSource Navigator Project

THE YOUTHSOURCE  
PARTNERSHIP LAUNCHED IN  
2024

4 "NAVIGATORS" WERE  
HIRED AND CO-LOCATED AT  
ALL 14 YSC'S AND 11 DACE  
SCHOOLS

NAVIGATORS SUPPORT 16-24  
YEAR-OLD OPPORTUNITY  
YOUTH IN ACCESSING  
QUALITY EDUCATION, CAREER  
TRAINING, EMPLOYMENT  
OPPORTUNITIES AND THE  
HOLISTIC SUPPORT SERVICES  
NECESSARY FOR SUCCESS



# LAUSD- DIVISION OF ADULT AND CAREER EDUCATION (DACE)

---

## *WHY DISCONNECTED?*

---

### RESPONSES FROM YOUTH CLIENTS

1. Don't know how to set goals, long or short term.
2. Lack of motivation, lack of direction. "What makes the most money?" heard from several students.
3. Mental health challenges. Anxiety after pandemic. Social Anxiety.
4. Lack of human interaction skills. Don't want to be around people.
5. Lack of family support and a support system. Parents may not put "stock" in formal education. The students don't have a solid platform to transition from teenager to adult.



# COLLECTIVE IMPACT AND SERVICE INTEGRATION

## Service Coordination

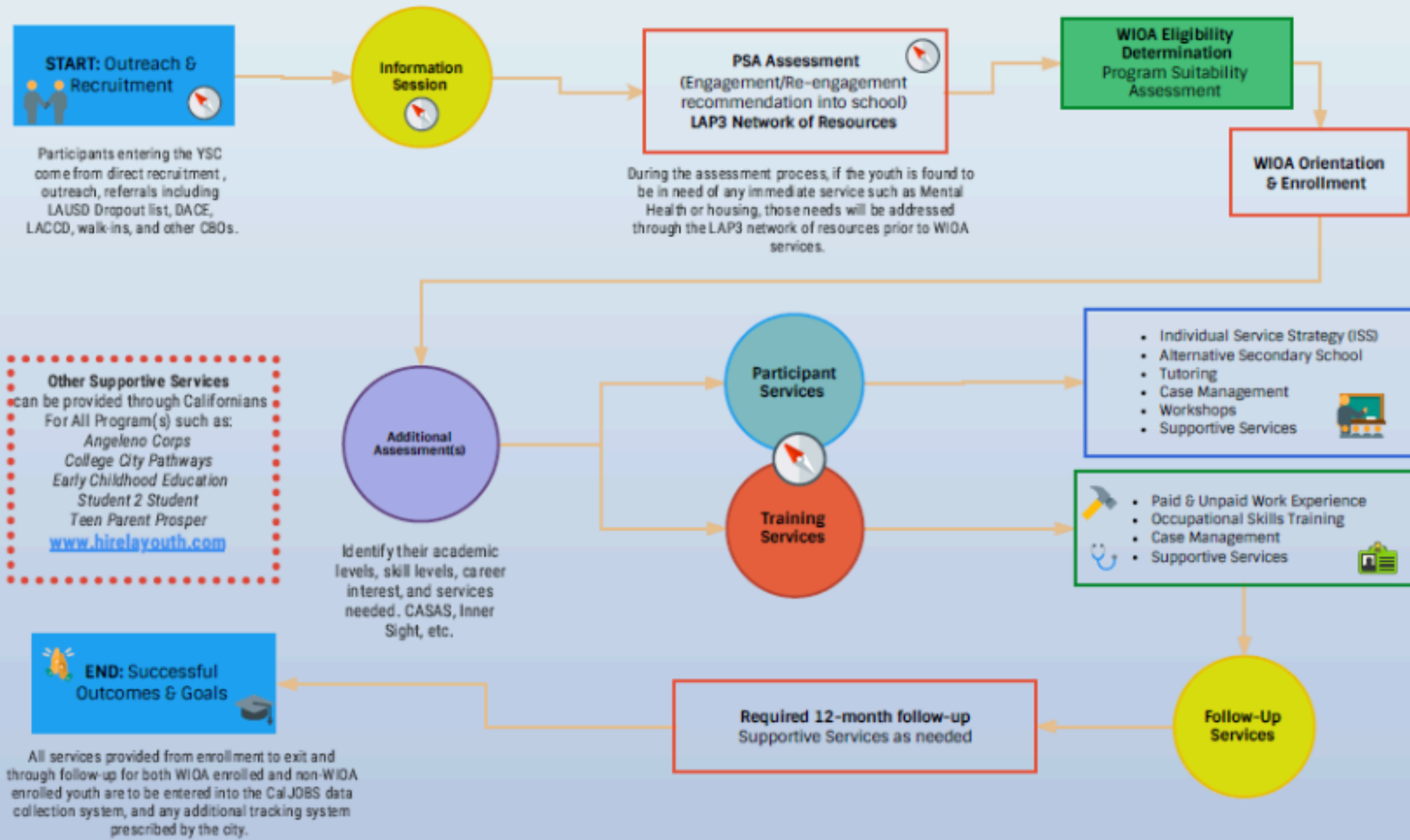
- Define roles and responsibilities
- Joint meetings
  - DACE Navigator launch
  - LACCD Navigator launch
- Created customer flow
- Sharing directory information
- Participant tracking via CaJobs
- Information and resource sharing
- LAP3 participation

North	South	East	West
<b>Goodwill</b> El Proyecto SF El Proyecto SV  <b>LAUSD DACE Navigator:</b> Ilona B. Monday - Goodwill Tuesday - West Valley Occupational Wednesday - El Proyecto SF Thursday - El Proyecto SV Friday - North Valley Occupational  <b>LACCD Navigator</b> Elizabeth A: El Proyecto SV Tuesday: 11am-4pm/Wed. 9am-2pm Anabel D: El Proyecto SF T: 10am-12pm/ Th:2pm-4pm/ F: 12pm-1pm *Pending Navigator at Goodwill  <b>PSA Counselor</b> Pamela Gates - Goodwill Josefina Gallo-Aguilar - El Proyecto SF Melissa Arambulo - El Proyecto SV	<b>AYE South</b> WLCAC Southeast LA YSC MCS Harbor  <b>LAUSD DACE Navigator:</b> Hector I. Monday - AYE South / MCS Harbor Tuesday - Slawson / Harbor Occ. Wednesday - WLCAC / AYE South Thursday - Maxine Waters / Slawson Friday - Southeast LA YSC / WLCAC  <b>LACCD Navigator</b> Aura R: MCS Harbor Friday 9am-4:30pm *Pending Navigator for: Southeast LA YSC/WLCAC/AYE South  <b>PSA Counselor</b> Veronica Villanueva - AYE Alejandro Cisneros - WLCAC Lorena Garcia - Southeast LA Araceli Schott - MCS Harbor	<b>Boyle Heights</b> PLN East CRCD  <b>LAUSD DACE Navigator:</b> Cynthia V. Monday - Boyle Heights / Abram Tuesday - East LA Occ. / Boyle Heights Wednesday - Evans Comm. / PLN East Thursday - PLN East / East LA Occ. Friday - CRCD  <b>LACCD Navigator</b> Julissa M: Boyle Heights W & Th. 8am-1pm Billy T: PLN East Fridays 8am-4:30pm *Pending Navigator at CRCD  <b>PSA Counselor</b> Gerardo Marquez - Boyle Heights Teresa Gonzalez - PLN East Erica Salcido - CRCD	<b>UCLA West</b> UCLA Central Brotherhood PLN Central  <b>LAUSD DACE Navigator:</b> Hugo R. Monday - UCLA West & Central Tuesday - Venice Skills / PLN Central Wed. - UCLA Central / Venice Skills Thursday - BHC / LA Tech Center Friday - LA Tech Center / BHC  <b>LACCD Navigator</b> Zakia F: UCLA West *Pending Navigator for UCLA Central, BHC, & PLN Central  <b>PSA Counselor</b> Lenin Diaz - UCLA Central Crystal Gallegos - UCLA West Tania Martinez - Brotherhood Crusade Jacqueline Cuevas - PLN Central





# YOUTHSOURCE CENTER CUSTOMER FLOW



# PSA COUNSELOR AND DACE NAVIGATOR COLLABORATION YOUTH HIGHLIGHT

## PSA Counselor/Navigator Best Practices

- **Communication and Coordination**
  - Check-ins
  - Case conferencing
  - Cross referral -warm/hand-off
  - Spreadsheet to keep each other informed of youth progress, including notes
- **Collaborative planning**
  - Outreach
  - Resource sharing
- **Celebrate success!**



Carlos was referred to the DACE Navigator by the PSA Counselor for enrollment in the CTE Electrician program. He successfully completed the certification training and is in the process of applying to DWP and the City of Los Angeles for employment.



THANK  
YOU

---

QUESTIONS?