

Driving Economic Impact:

Transforming Communities through Sports and Entertainment

LAEDC 88 Cities Summit

March 18, 2025

INTUIT DOME



AECOM



Ken Billups

Vice President of Economic Inclusion & Social Impact

AECOM

Today's featured panelists



Christopher Jackson, Sr

City of Inglewood

**Development Services
Director**



Traci Watson

*National Association of
Minority Contractors*

President,—SoCal



Ben Garcia

*Los Angeles/Orange Counties Building
and Construction Trades Council*

**Executive Director of
the Apprenticeship
Readiness Fund**



Agenda

Objective

**Intuit Dome
Overview**

**Economic
Inclusion &
Social Impact
Summary**

**Panel
Discussion**

Q&A

Our Objective

The Set-up:

Inglewood has undergone remarkable economic transformation over the past decade, with the unemployment rate plummeting from over 17% to just 4%. This success stems from the City's visionary development agreements and innovative strategies in fostering partnerships across the community for projects like the Intuit Dome.

A groundbreaking example is the launch of the first-ever pre-apprenticeship program integrated into the local school district, paving the way for sustainable workforce development. These achievements were made possible through the collaborative efforts of the client (Los Angeles Clippers), community stakeholders, building trades, subcontractors, and AECOM's facilitation of consensus-driven progress.



Learning Objectives:

- Share how strategic partnerships can drive economic revitalization and lower unemployment through large-scale developments.
- Explore nontraditional approaches to overcoming social challenges when executing mega-projects.
- Learn the importance of community-focused initiatives, such as pre-apprenticeship programs, in creating lasting socioeconomic impacts



AECOM Stadium Experience



145+

Design Awards in Sports

\$26B+

Contract Value

84M SF

Sports Construction

15 NFL

Stadiums

18 MLB

Stadiums

9 Operable

Roofs

24 NBA

Arenas

16 NHL

Arenas

100+ Collegiate

Athletic Projects

Intuit Dome

Home of the LA Clippers

Inglewood, California



Location Overview

Context

- 1 KIA Forum
- 2 SoFi Stadium
- 3 Hollywood Park Retail

Intuit Dome

- 4 East Parking
- 5 Main Plaza
- 6 West Parking
- 7 Arena
- 8 LA Clippers Office
- 9 Practice Facility
- 10 South Garage



Intuit Dome:

Bowl, Halo
and 'The Wall'

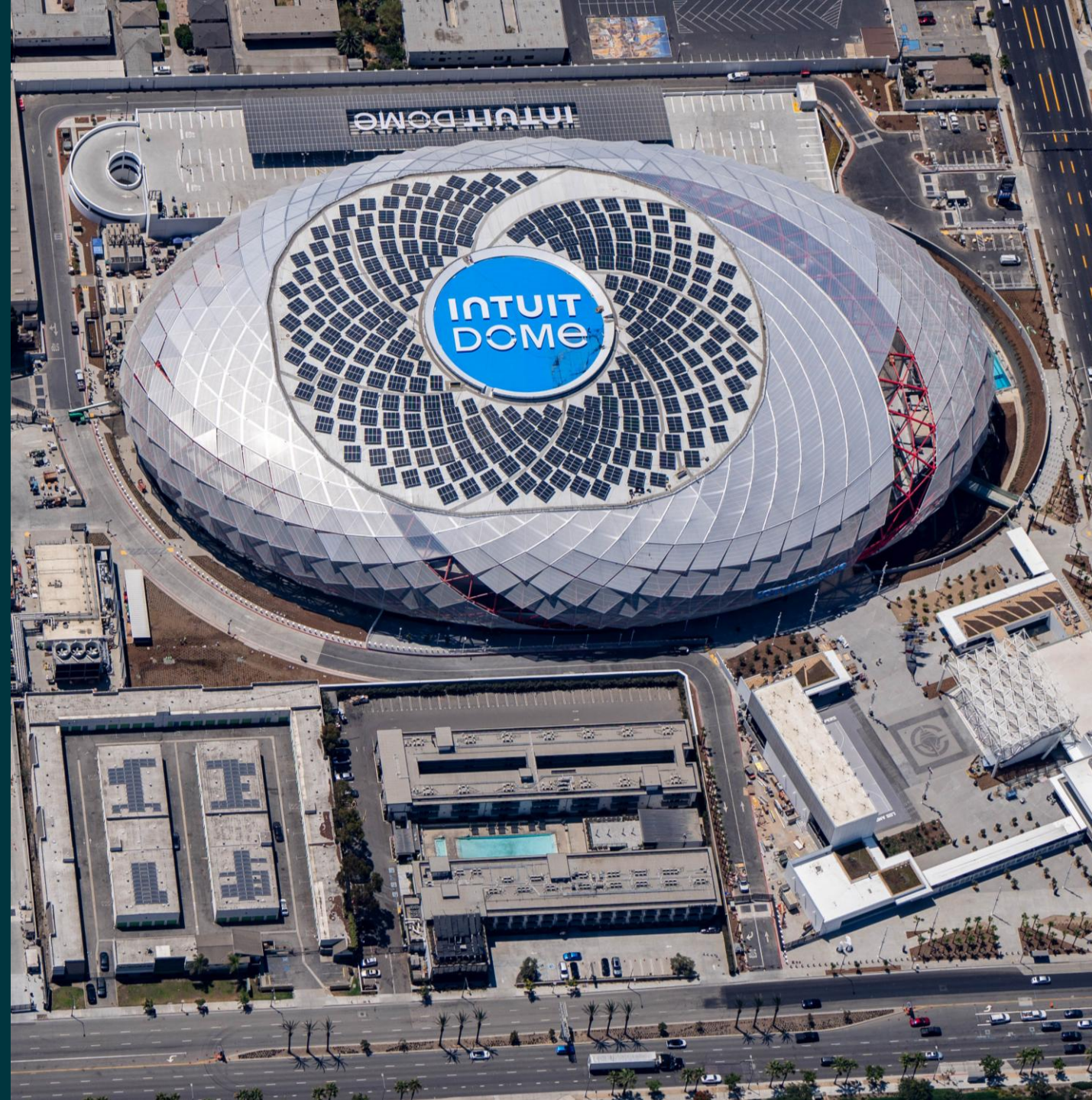
Kevin Durant—an 88% career free throw shooter—missed two from the line and said, "Yeah, it was crazy," Durant said when asked about The Wall. "I was just staring at it the whole time." Continuing, he stated "Incredible. I loved it. I absolutely love the Wall that they got. It's insane..."



Intuit Dome: Community Court

Ownership's Goals:

- **Home** for the LA Clippers – Arena, Practice Facility, and Team Offices.
- **Intimate** and intense atmosphere that creates home court advantage.
- **Unique** fan experience that promotes full participation.
- **Player** spaces that maximize performance and recovery
- **Create** community assets - plaza with court, stage, and public art.
- **Sustainability** as a priority.
- **Instantly** recognizable as the home of the LA Clippers



Economic Inclusion & Social Impact Pillars



Business Inclusion

Aimed at developing a more inclusive base of subconsultants and suppliers when procuring services. For example, Disadvantaged-, Minority-, Local-Owned businesses.



Workforce Development

Promote opportunities within the company (ie Internships), develop career pathways, and prioritize the residents within the communities we serve.



Education & Youth Engagement

Identifying innovate ways to engage the youth and educational programs within the community to further expand our expertise and allow for exposure to the A/C/E industries.



Community & Stakeholder Engagement

Extend our social value contributions through employee-driven community investments, including strategic non-profit partnerships, pro bono work, skills-based volunteering and philanthropy

Impacting our Communities by being intentional about how we do business and service the places and spaces where we do business.

Business Inclusion



Scope

With a thriving constructing region pulling from the same resources and limited access to exposure to the trades + resources.



Strategic Partnerships & Outreach

With a thriving constructing region pulling from the same resources and limited access to exposure to the trades + resources.



Minimize Barriers

Align with key stakeholders like LA/OC Building Trades, Inglewood Unified School District.



Maximize Opportunities

We ushered in the first ever Pre-Apprenticeship program to Inglewood Unified School District.



Investment in the Marketplace

With a thriving constructing region pulling from the same resources and limited access to exposure to the trades + resources.

Workforce Development

Issue

With a thriving constructing region pulling from the same resources and limited access to exposure to the trades + resources, there was limited availability of local and diverse qualified tradesmen and tradeswomen within the building trades

Solution

Align with key stakeholders like LA/OC Building Trades, Inglewood Unified School District, and certified training programs to pilot the first ever Pre-apprenticeship MC3 training program within Inglewood Unified School District

Benefit

We ushered in the first ever Pre-Apprenticeship program to Inglewood Unified School District, ensuring that students have access to Construction Careers provided by the LA/OC Building Trades and their Multi-Craft Core Curriculum intended for new workers.

INGLEWOOD UNIFIED SCHOOL DISTRICT

Multi-Craft Core Curriculum MC3

COURSES

at
Morningside HS 10500 Yukon Ave.
Inglewood, CA 90303

Apprenticeship Readiness
Information Sessions at 3:30PM on
March 7, 2022 & March 21, 2022
Class starts Wednesday, March 23, 2022

In Partnership With

SBWIB
A WORKFORCE DEVELOPMENT BOARD

SOUTH BAY
America's JobCenter
of Calipatria

AECOM Turner
NSA JOINT VENTURE

CAREER EXPANSION

APPRENTICESHIP READINESS FUND
LOS ANGELES/ORANGE COUNTIES
BUILDING & CONSTRUCTION TRADES COUNCIL, AFL-CIO

Educational STEAM Program

As part of our commitment to the Intuit Dome, the team identified a local after-school program to volunteer and lend our industry expertise.

ACE Mentor Program (Inglewood, CA)

An afterschool program designed to attract high school students into pursuing careers in the Architecture, Construction and Engineering industry, including skilled trades. The mission is to engage, excite, and enlighten high school students to pursue careers in architecture, engineering, and construction through mentoring and continued support for their advancement into the industry.



Intuit Dome: Building Infrastructure for All



\$475M+ Diverse Business Participation



\$280M+ Local Business Participation



30% Targeted Local Hire / **72%** LA County / **10+** Internships



First ever Pre-Apprenticeship Program in Inglewood Unified School District



100+ Inglewood Unified students in afterschool STEAM program



Good Neighbor Program



World's First Climate-Positive Arena



Trusted infrastructure partner and community partner

pictured: Ken Billups and Steve Ballmer



Panel Conversation

INTUIT DOME