

Los Angeles County Business Outlook

April 2016

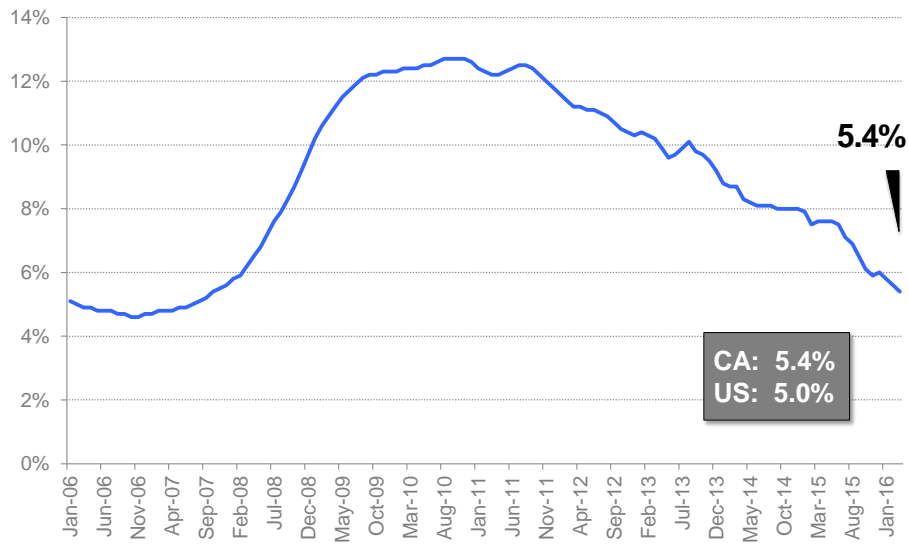
Business Scan

Kyser Center for Economic Research

Indicator	Most Recent Period	Current Reading	Last Year's Reading	YTY Change
Unemployment Rate (<i>seasonally adjusted</i>)	Mar-16	5.4%	7.4%	-2.0%
Nonfarm Employment (# of jobs)	Mar-16	4,341,700	4,244,000	2.3%
Port Container Traffic (TEU's)	Mar-16	1,077,718	1,421,948	-24.2%
Goods Movement Employment	Mar-16	385,600	382,400	0.8%
Airport Passenger Traffic (# of passengers)	Feb-16	5,946,127	5,468,252	8.7%
Technology Employment	Mar-16	191,500	187,500	2.1%
Fashion Employment	Mar-16	74,400	76,100	-2.2%
Professional Services Employment	Mar-16	316,600	305,100	3.8%
Manufacturing Employment	Mar-16	356,800	361,900	-1.4%
Finance and Insurance Employment	Mar-16	134,800	133,900	0.7%
Health Services Employment	Mar-16	650,700	622,300	4.6%
Single Family Housing Construction Permits	Feb-16	339	258	81
Multifamily Housing Construction Permits	Feb-16	1,300	1,631	-331
Construction Employment	Mar-16	126,700	122,800	3.2%
Industrial Vacancy Rates	Q1-16	1.1%	1.6%	-0.5%
Office Vacancy Rates	Q1-16	14.8%	15.5%	-0.7%
Motion Picture & Sound Recording Employment	Mar-16	132,100	128,600	2.7%
Tourism (<i>Revenue Per Available Room</i>)	Feb-15	\$183.28	\$154.45	18.7%

Unemployment Rate

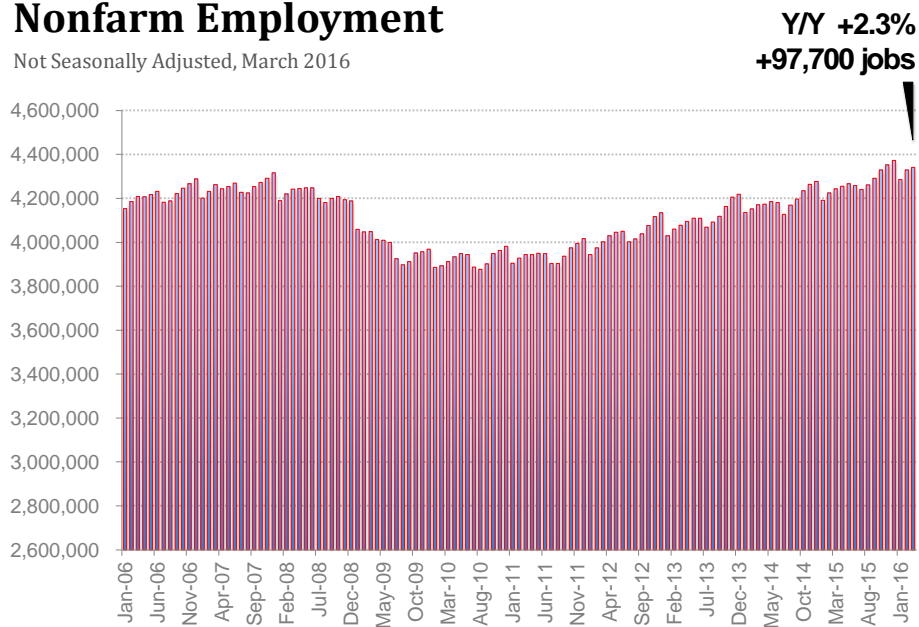
Seasonally Adjusted, March 2016



Source: California EDD, Labor Market Information Division

Nonfarm Employment

Not Seasonally Adjusted, March 2016

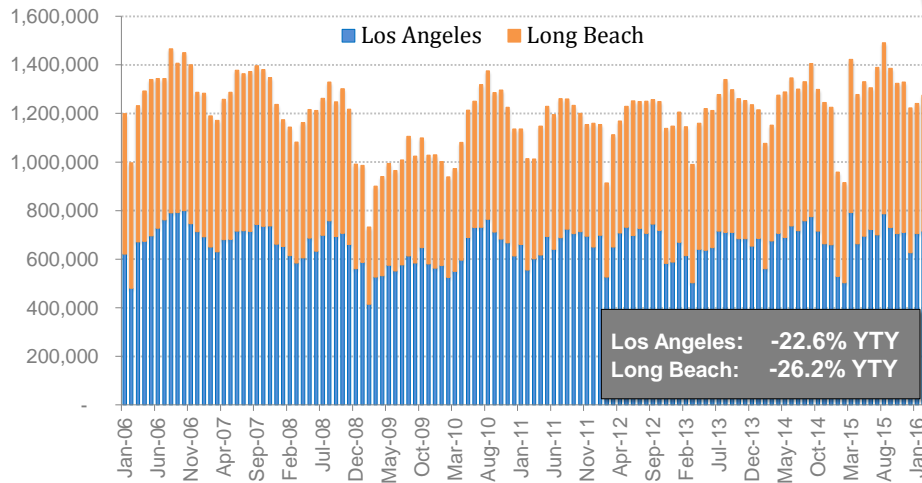


Source: California EDD, Labor Market Information Division

Port Container Traffic – Los Angeles & Long Beach

Ton Equivalent Units (TEUs), March 2016

San Pedro Ports YTY: -24.2%

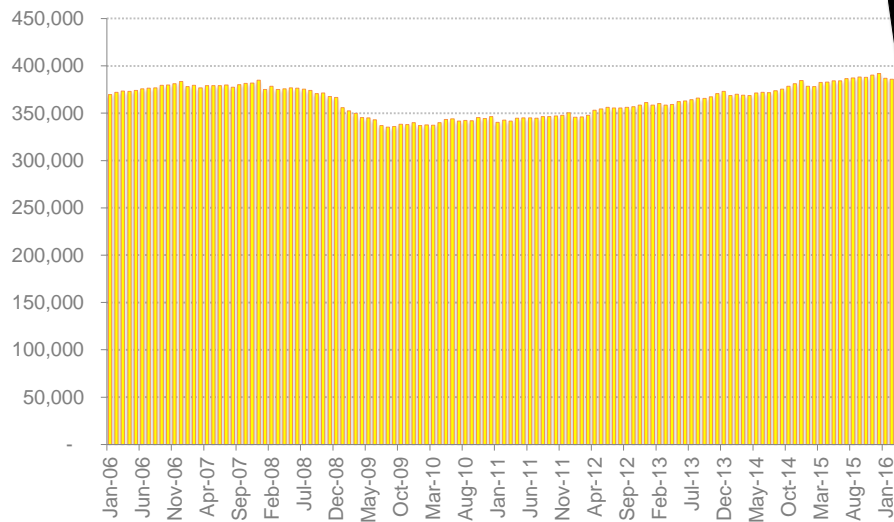


Sources: Port of Los Angeles, Port of Long Beach, LAEDC

Goods Movement Employment*

Not Seasonally Adjusted, March 2016

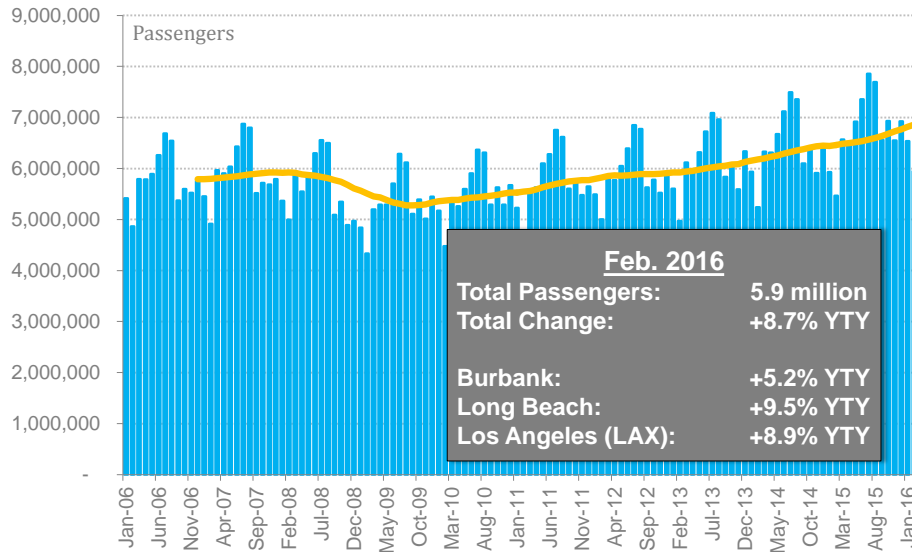
YY +0.8%
+3,200 jobs



Source: California EDD, Labor Market Information Division

*NAICS Codes: 41-000000, 43-400089 (Transportation and Warehousing; Wholesale Trade)

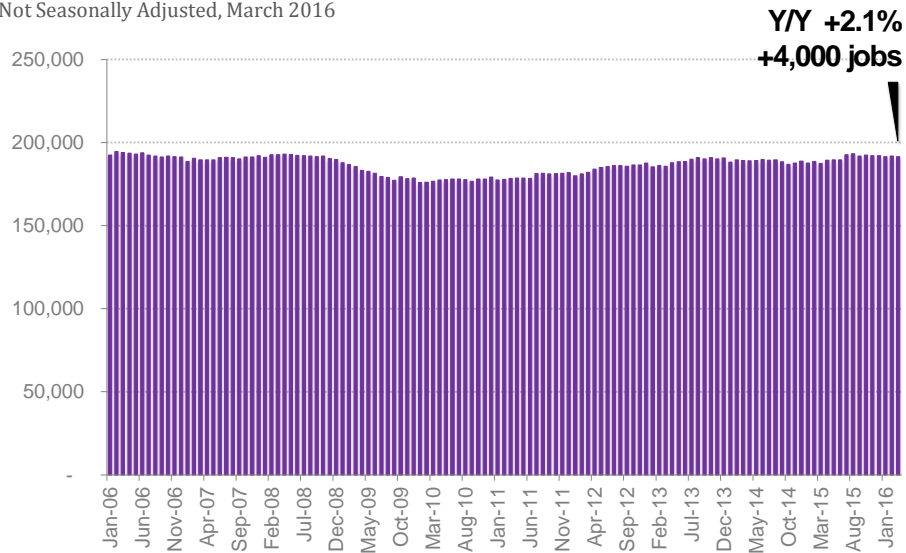
Airport Passenger Traffic -- Burbank, Long Beach & Los Angeles



Sources: Burbank Bob Hope Airport, Long Beach Airport, Los Angeles International Airport

Technology Employment

Not Seasonally Adjusted, March 2016

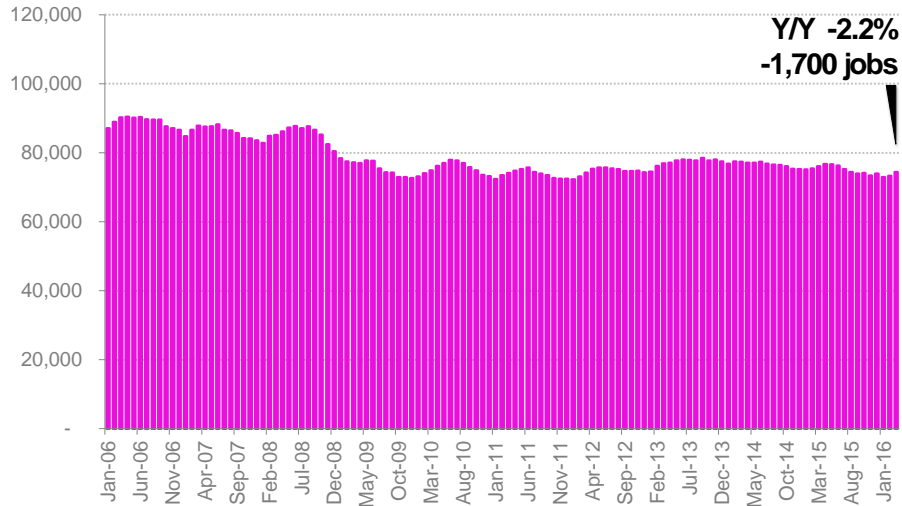


Source: California EDD, Labor Market Information Division

NAICS Codes: 31-334000, 31-336400, 32-325400, 50-518000, 60-541500, 60-541600, 60-541700

Fashion Employment

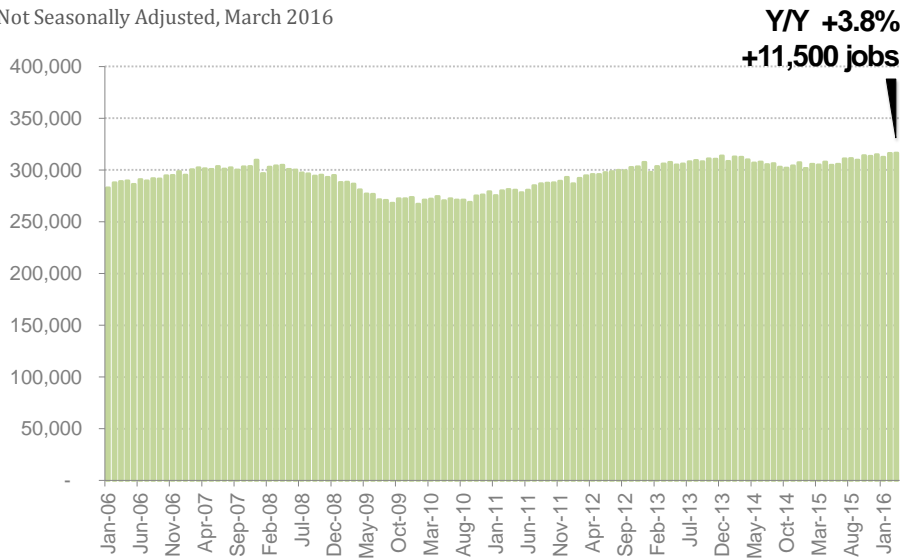
Not Seasonally Adjusted, March 2016



Source: California EDD, Labor Market Information Division
NAICS Codes: 32-315000, 41-424300, 32-313000

Professional Services Employment

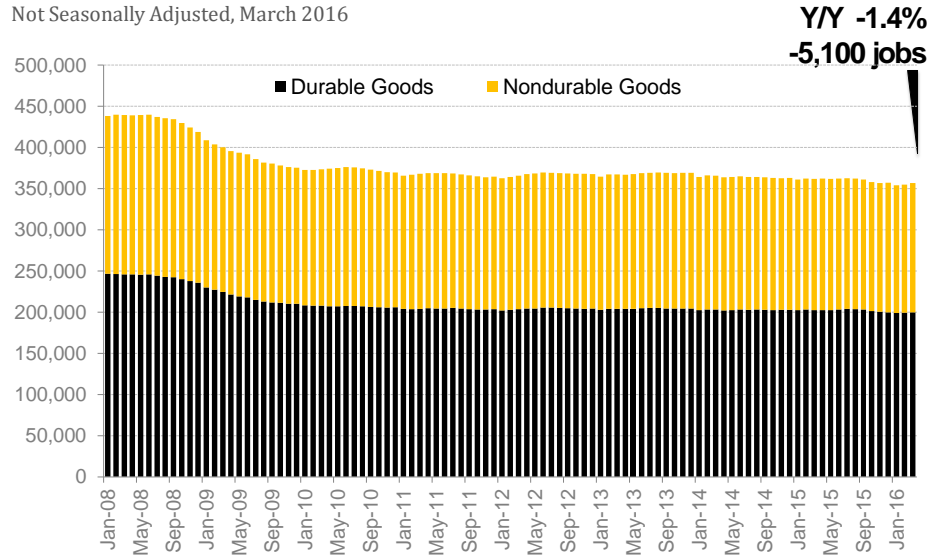
Not Seasonally Adjusted, March 2016



Source: California EDD, Labor Market Information Division
NAICS Codes: 60-540000, 60-541500

Manufacturing Employment

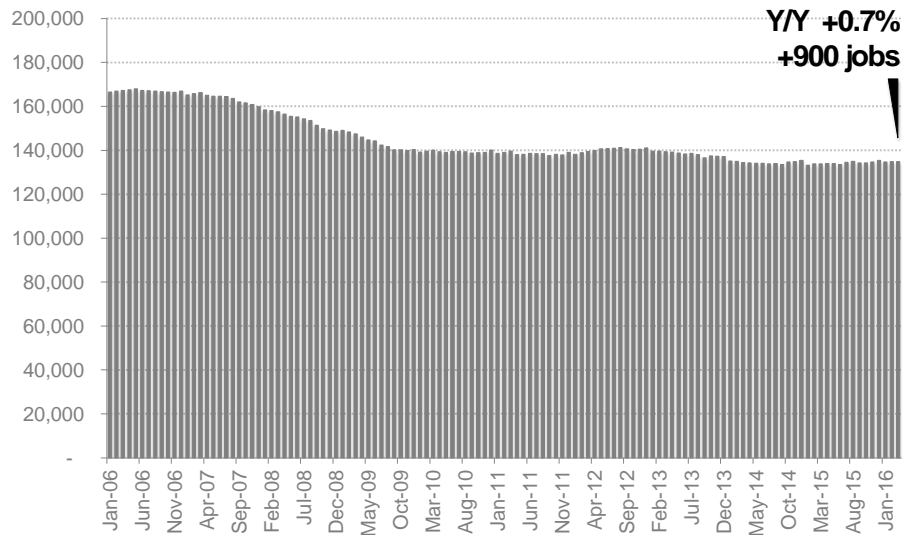
Not Seasonally Adjusted, March 2016



Source: California EDD, Labor Market Information Division

Finance and Insurance Employment

Not Seasonally Adjusted, March 2016

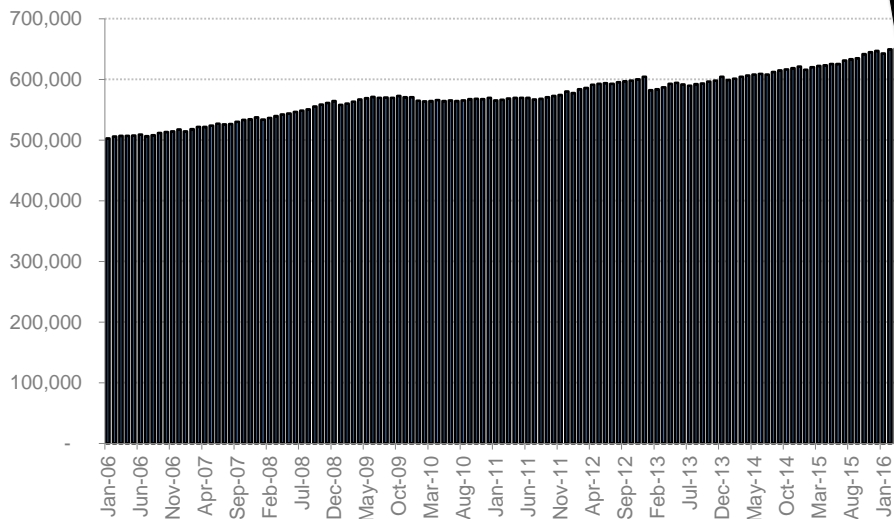


Source: California EDD, Labor Market Information Division

Health Services Employment

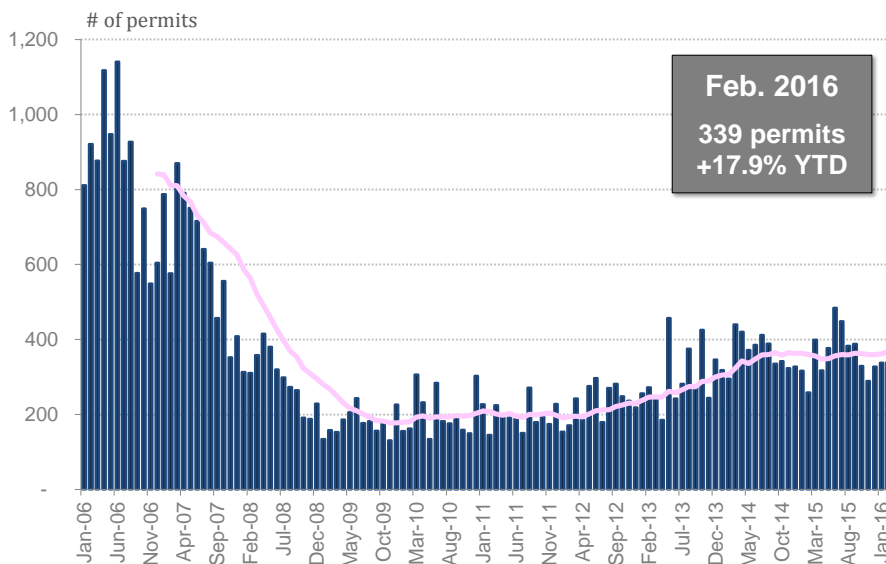
Not Seasonally Adjusted, March 2016

YY +4.6%
+28,400 jobs



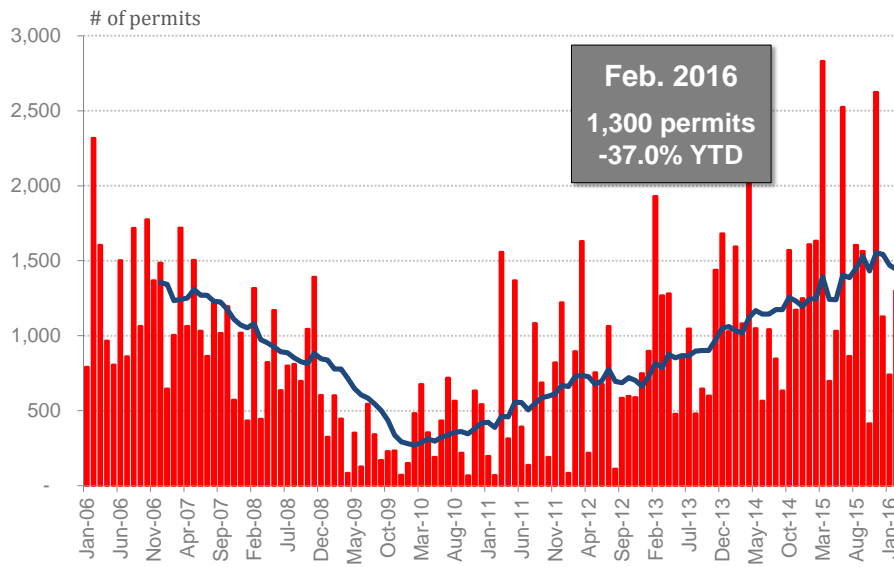
Source: California EDD, Labor Market Information Division
NAICS Codes: 32-325400, 60-620000

Single Family Housing Construction Permits



Source: CIRB, California Home Building Foundation

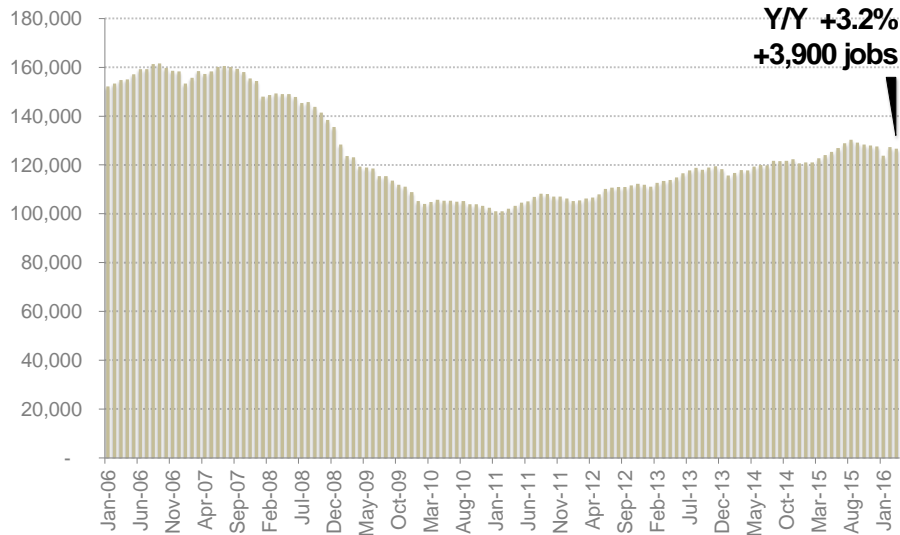
Multi-Family Housing Construction Permits



Source: CIRB, California Home Building Foundation

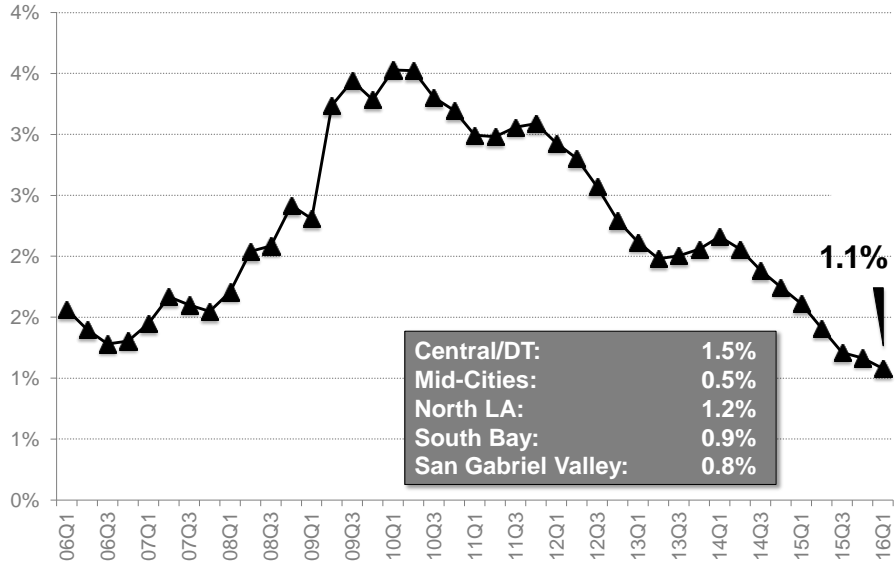
Construction Employment

Not Seasonally Adjusted, March 2016



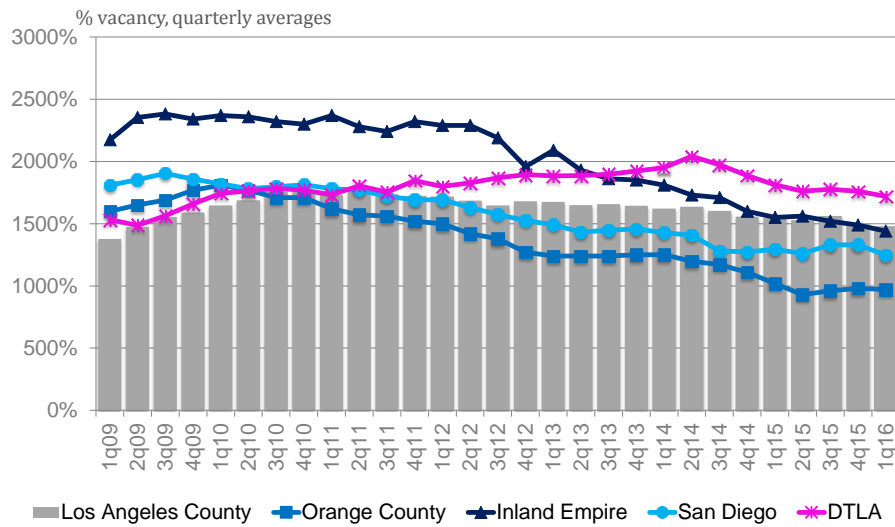
Source: California EDD, Labor Market Information Division

Industrial Vacancy Rates Q1 2016



Source: CBRE Research

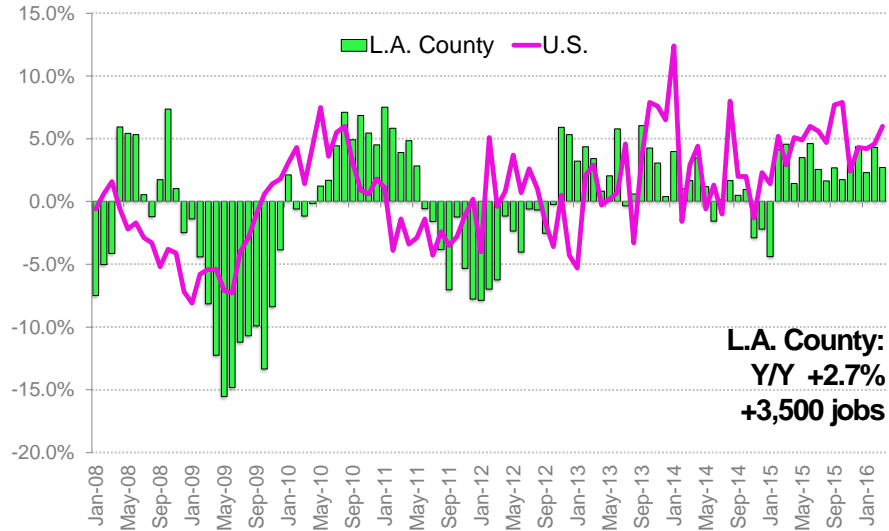
Office Vacancy Rates – SoCal Counties & Downtown LA



Source: CBRE Research

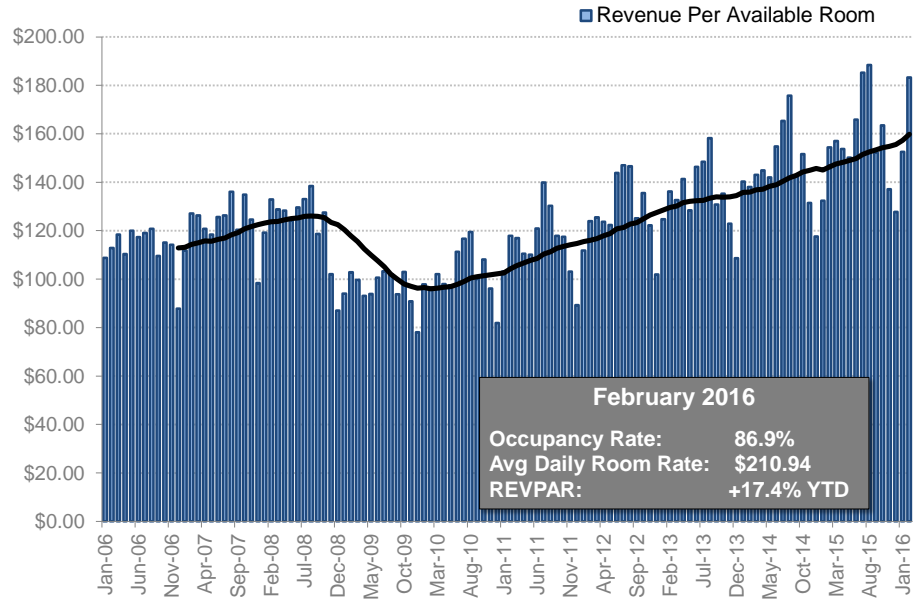
Motion Picture & Sound Recording Employment

Not Seasonally Adjusted, March 2016 (year/year percent change)



Source: California EDD, Labor Market Information Division

Tourism



Source: CBRE Hotels

For data inquiries please contact:

George Entis

Research Analyst

Kyser Center for Economic Research, LAEDC

444 S. Flower Street, 37th Floor

Los Angeles, CA 90071

Tel: (213) 236-4820

Email: george.entis@LAEDC.org

Twitter: @GeorgeEntis

For media inquiries please contact:

Lawren Markle

Director of Public Relations and Marketing

Los Angeles County Economic Development Corporation

444 S. Flower Street, 37th Floor

Los Angeles, CA 90071

Tel: (213) 236-4847

Email: lawren.markle@LAEDC.org

Twitter: @LAEDC



LOS ANGELES COUNTY
ECONOMIC DEVELOPMENT CORPORATION