



# Los Angeles County Business Outlook December 2015

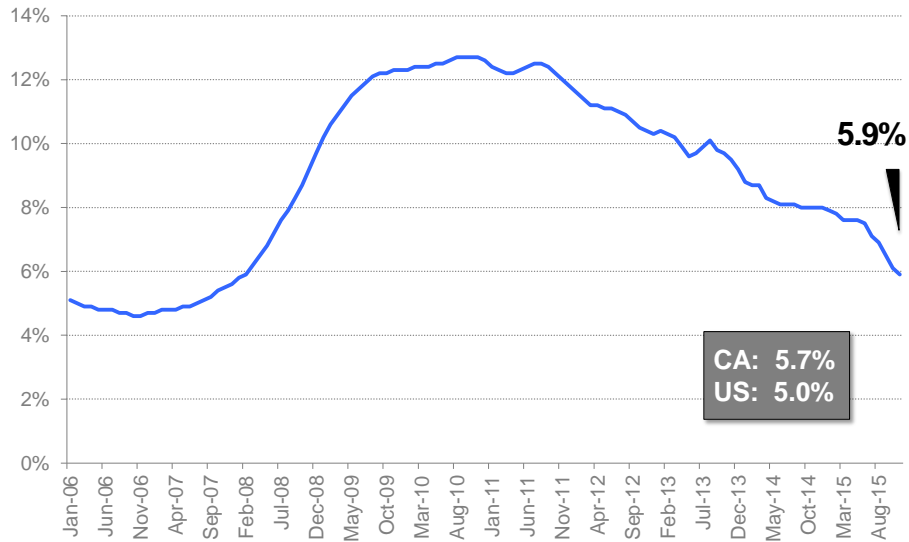
## Business Scan

Kyser Center for Economic Research

Indicator	Most Recent Period	Current Reading	Last Year's Reading	YTY Change
Unemployment Rate	Nov-15	5.9%	8.0%	-2.1%
Nonfarm Employment (# of jobs)	Nov-15	4,386,500	4,313,300	1.7%
Port Container Traffic (TEU's)	Nov-15	1,329,668	1,244,860	6.8%
Goods Movement Employment	Nov-15	387,600	381,300	1.7%
Airport Passenger Traffic (# of passengers)	Oct-15	6,927,704	6,423,548	7.8%
Technology Employment	Nov-15	195,900	193,400	1.3%
Fashion Employment	Nov-15	76,400	75,900	0.7%
Professional Services Employment	Nov-15	322,800	315,100	2.4%
Manufacturing Employment	Nov-15	357,800	365,300	-2.1%
Finance and Insurance Employment	Nov-15	131,400	133,700	-1.7%
Health Services Employment	Nov-15	668,300	643,700	3.8%
Single Family Housing Construction Permits	Oct-15	329	342	-13
Multifamily Housing Construction Permits	Oct-15	413	1,569	-1156
Construction Employment	Nov-15	130,600	124,400	5.0%
Industrial Vacancy Rates	Q3-15	2.5%	3.8%	-1.3%
Office Vacancy Rates (L.A. County)	Q3-15	14.6%	17.0%	-2.4%
Motion Picture & Sound Recording Employment	Nov-15	117,400	124,000	-5.3%
Tourism (Revenue Per Available Room)	Sep-15	\$152.32	\$139.04	9.6%

# Unemployment Rate

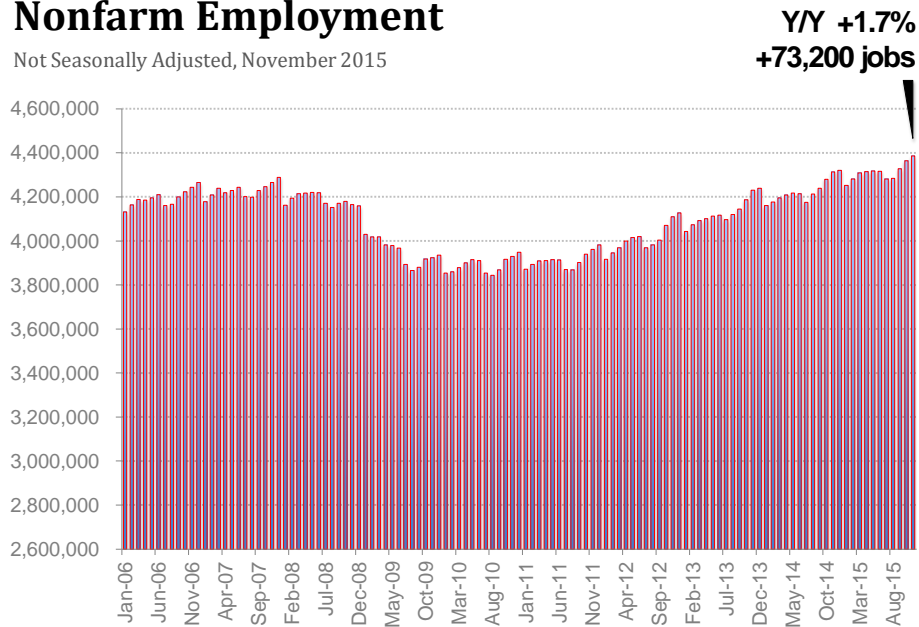
Seasonally Adjusted, November 2015



Source: California EDD, Labor Market Information Division

# Nonfarm Employment

Not Seasonally Adjusted, November 2015

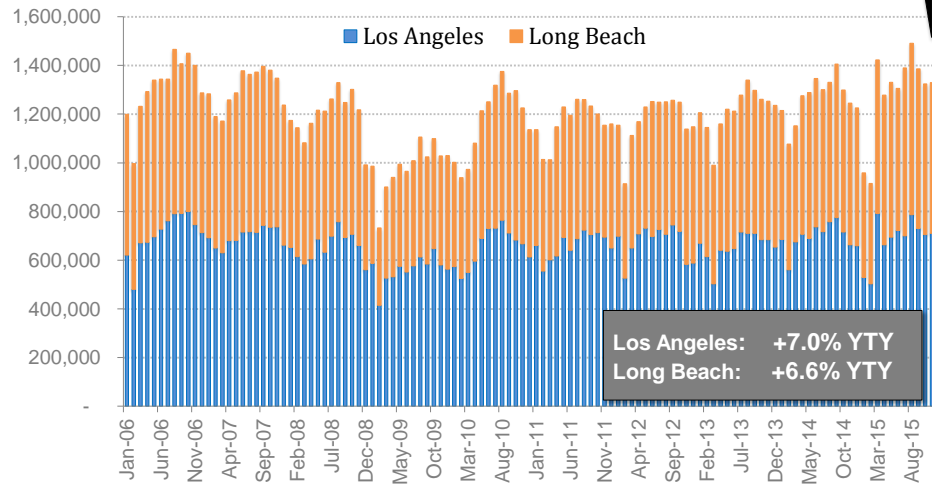


Source: California EDD, Labor Market Information Division

# Port Container Traffic – Los Angeles & Long Beach

Ton Equivalent Units (TEUs), November 2015

**San Pedro Ports YTY: +6.8%**

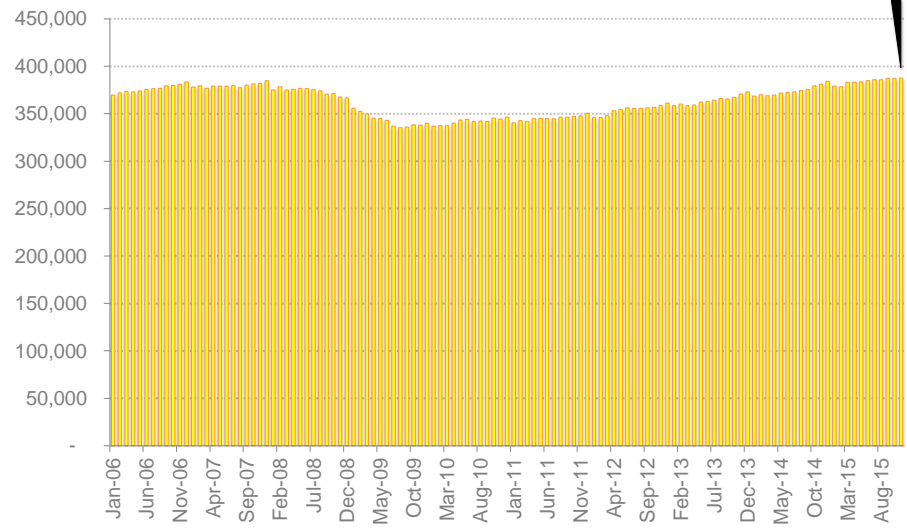


Sources: Port of Los Angeles, Port of Long Beach, LAEDC

# Goods Movement Employment\*

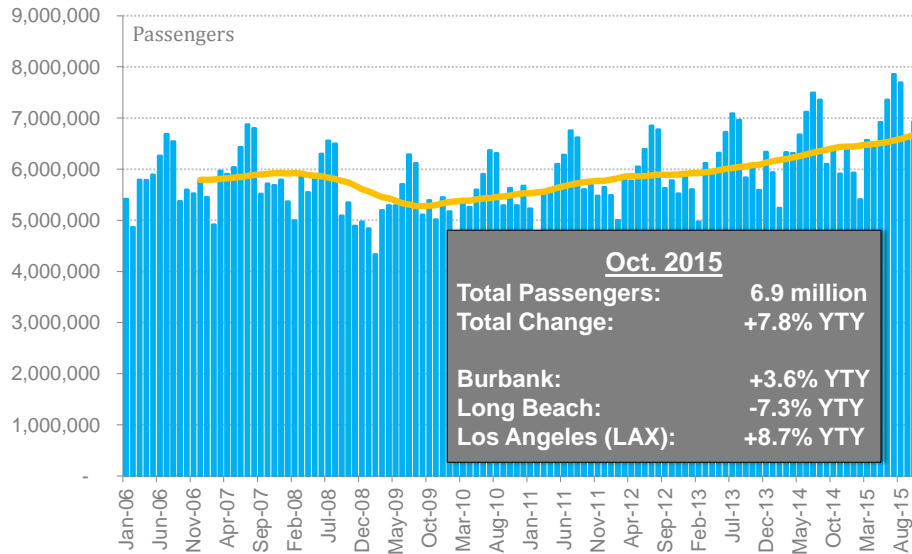
Not Seasonally Adjusted, November 2015

**YY +1.7%**  
**+6,300 jobs**



Source: California EDD, Labor Market Information Division  
\*NAICS Codes: 41-000000, 43-400089 (Transportation and Warehousing; Wholesale Trade)

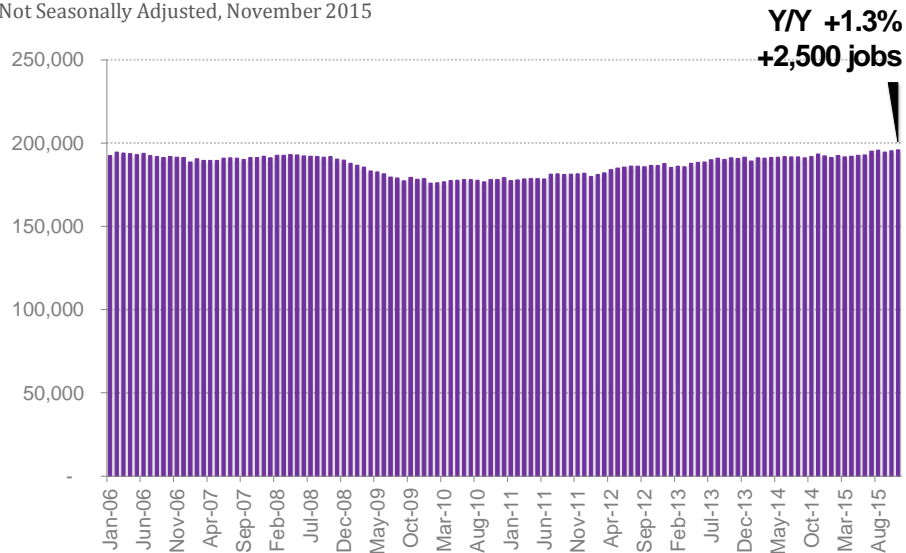
## Airport Passenger Traffic -- Burbank, Long Beach & Los Angeles



Sources: Burbank Bob Hope Airport, Long Beach Airport, Los Angeles International Airport

## Technology Employment

Not Seasonally Adjusted, November 2015

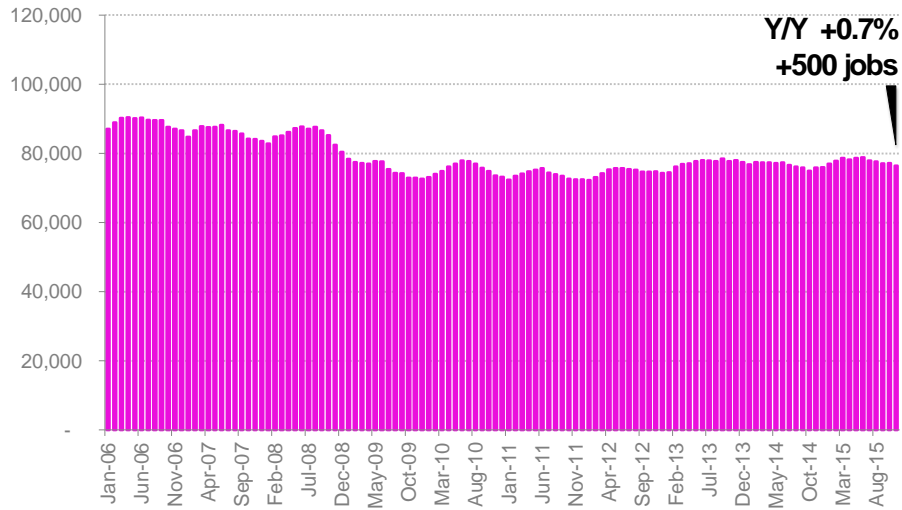


Source: California EDD, Labor Market Information Division

NAICS Codes: 31-334000, 31-336400, 32-325400, 50-518000, 60-541500, 60-541600, 60-541700

## Fashion Employment

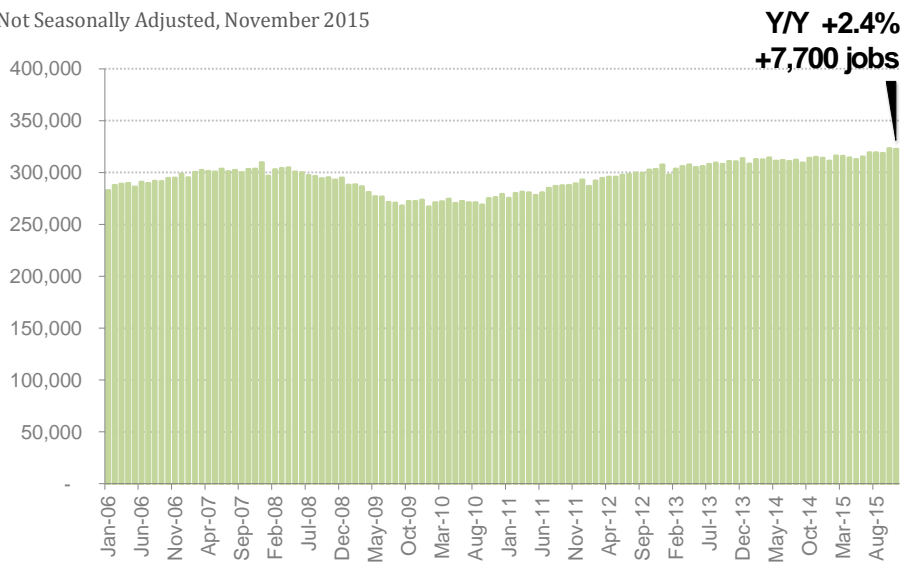
Not Seasonally Adjusted, November 2015



Source: California EDD, Labor Market Information Division  
NAICS Codes: 32-315000, 41-424300, 32-313000

## Professional Services Employment

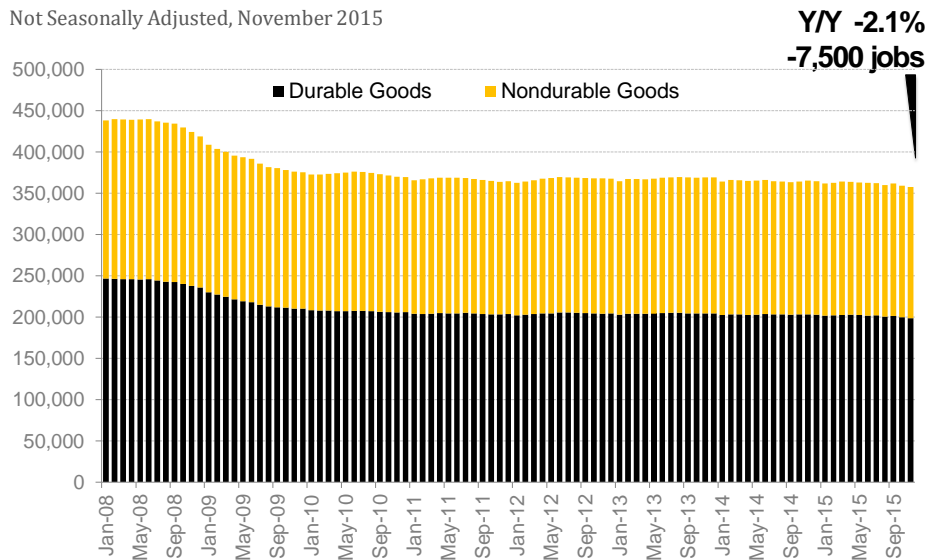
Not Seasonally Adjusted, November 2015



Source: California EDD, Labor Market Information Division  
NAICS Codes: 60-540000, 60-541500

## Manufacturing Employment

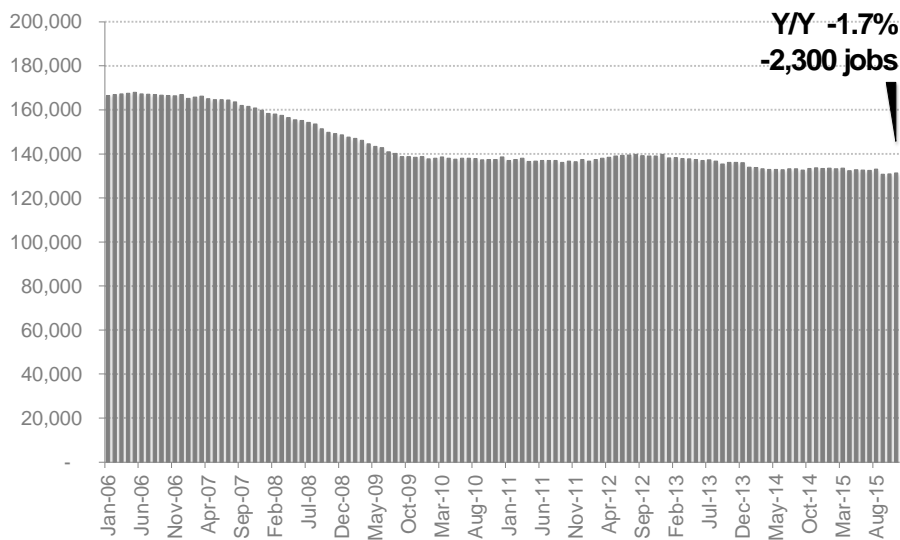
Not Seasonally Adjusted, November 2015



Source: California EDD, Labor Market Information Division

## Finance and Insurance Employment

Not Seasonally Adjusted, November 2015

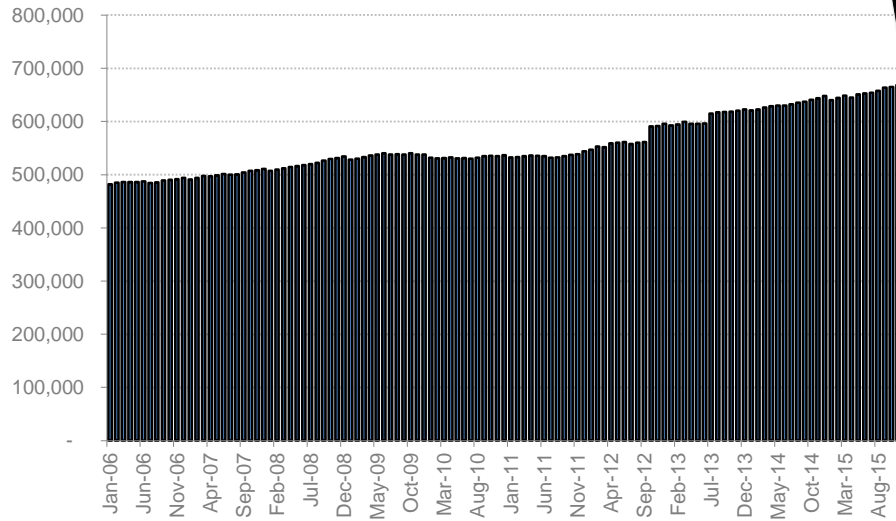


Source: California EDD, Labor Market Information Division

## Health Services Employment

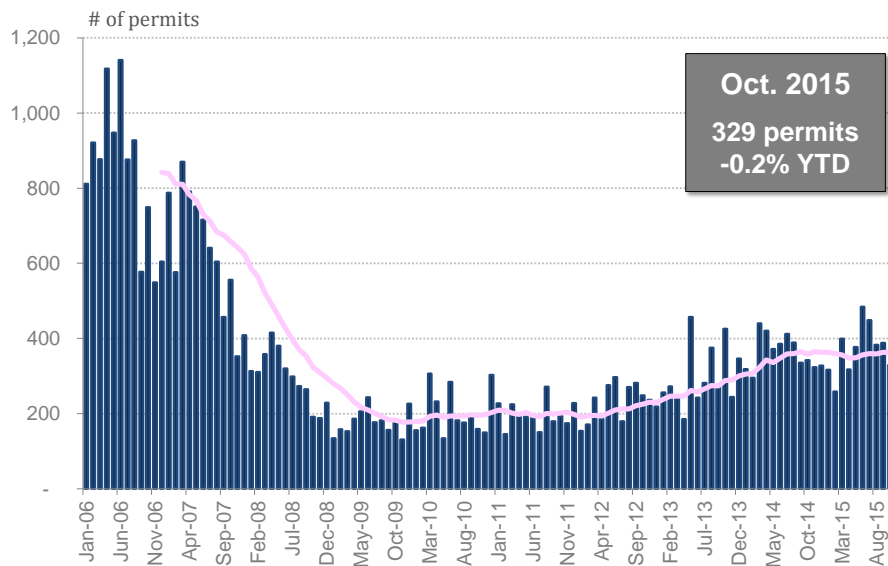
Not Seasonally Adjusted, November 2015

**YY +3.8%**  
**+24,600 jobs**



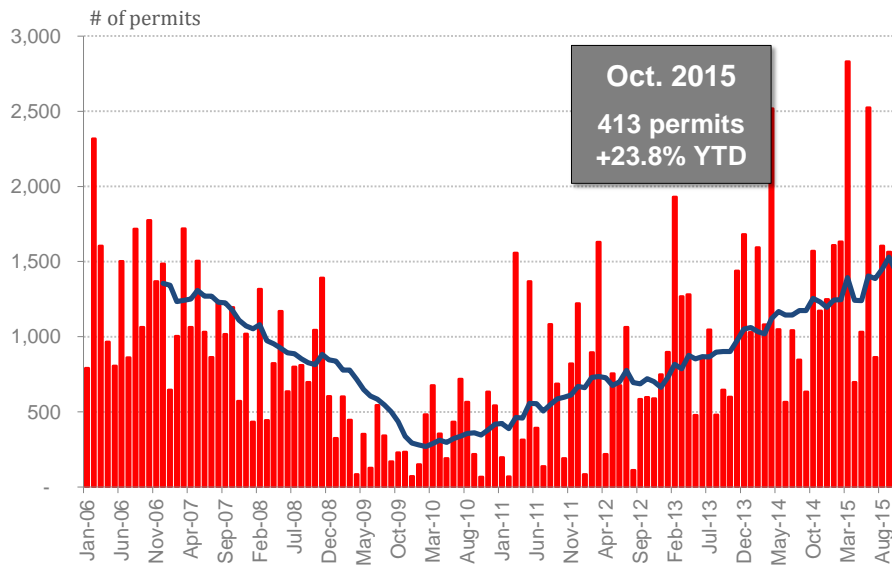
Source: California EDD, Labor Market Information Division  
NAICS Codes: 32-325400, 60-620000

## Single Family Housing Construction Permits



Source: CIRB, California Home Building Foundation

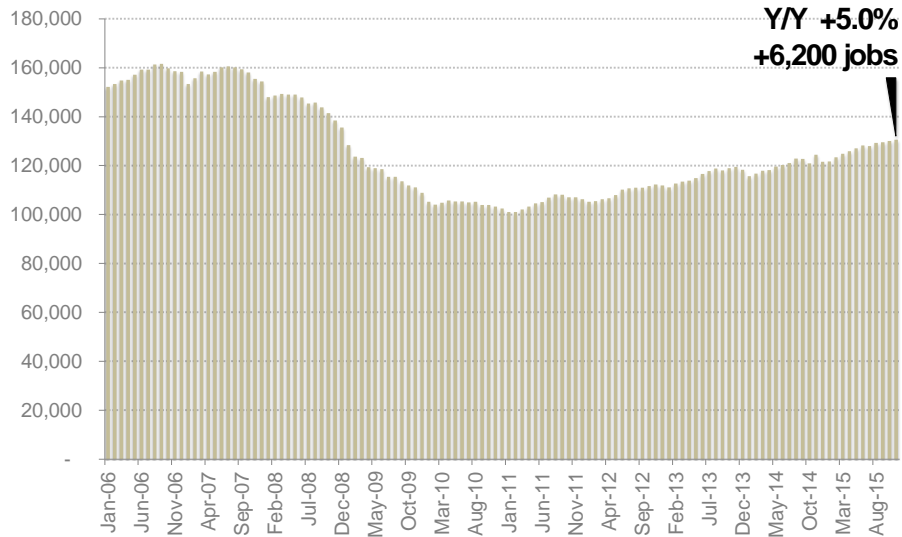
## Multi Family Housing Construction Permits



Source: CIRB, California Home Building Foundation

## Construction Employment

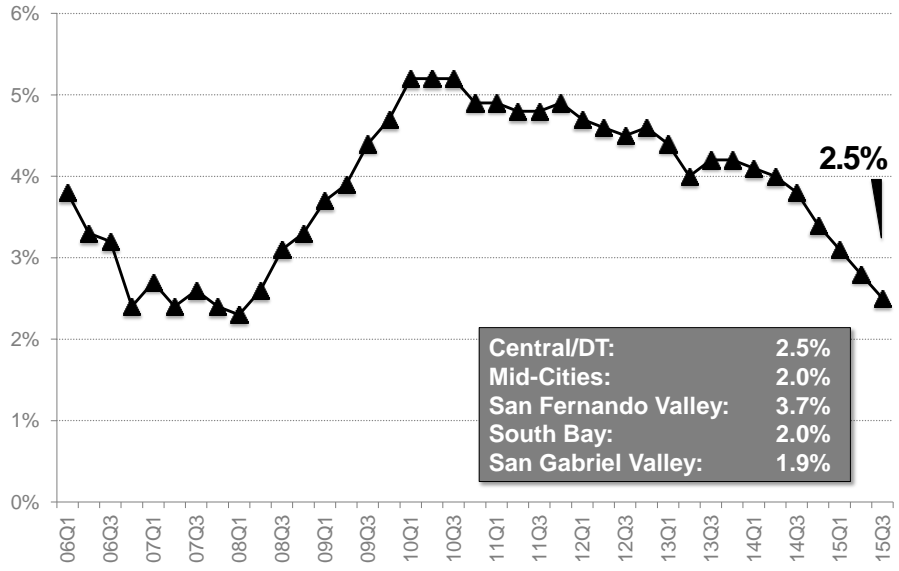
Not Seasonally Adjusted, November 2015



Source: California EDD, Labor Market Information Division

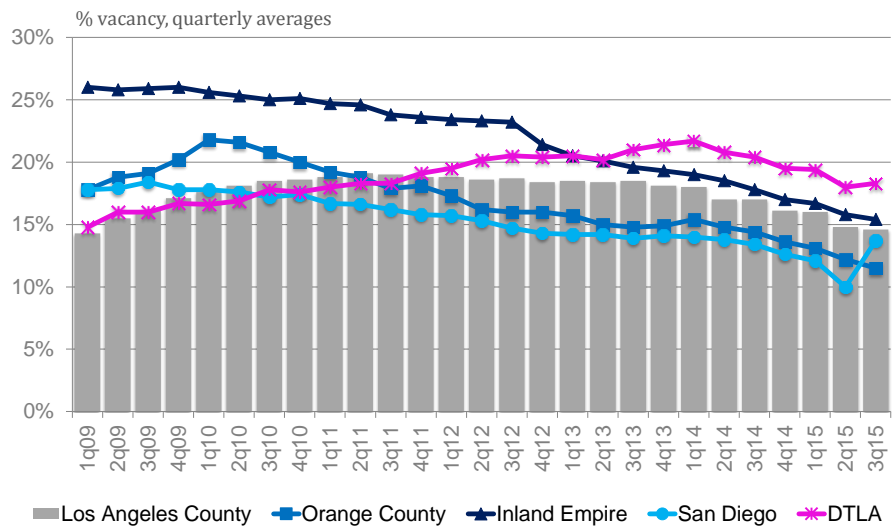


## Industrial Vacancy Rates Q3 2015



Source: Cushman & Wakefield

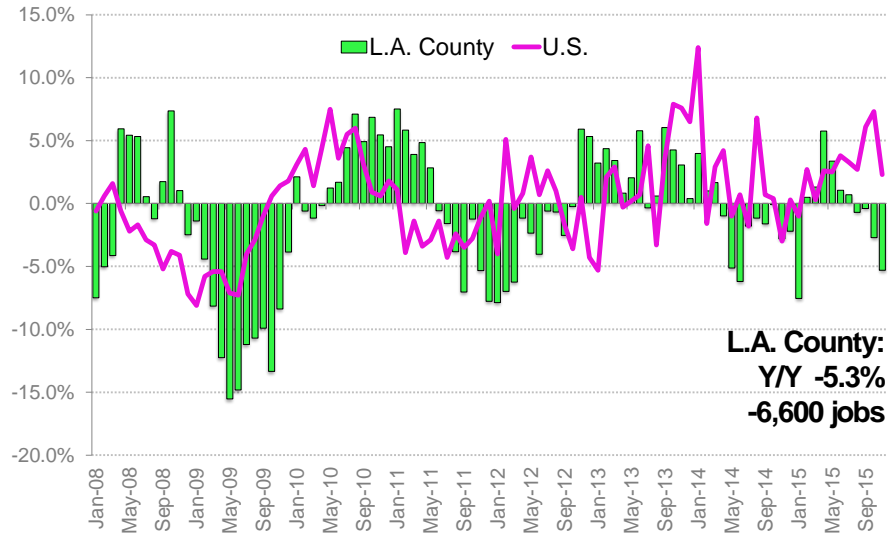
## Office Vacancy Rates - SoCal Counties & Downtown LA



Source: Cushman and Wakefield

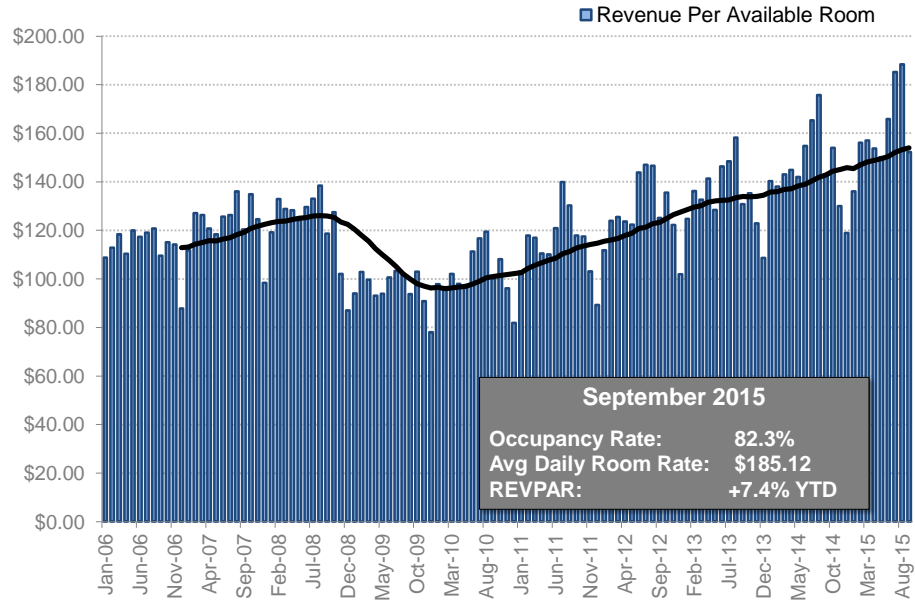
# Motion Picture & Sound Recording Employment

Not Seasonally Adjusted, November 2015 (year/year percent change)



Source: California EDD, Labor Market Information Division

# Tourism



Source: PKF Consulting

For data inquiries please contact:

**George Entis**

Research Analyst

Kyser Center for Economic Research, LAEDC

444 S. Flower Street, 37<sup>th</sup> Floor

Los Angeles, CA 90071

Tel: (213) 236-4820

Email: [george.entis@LAEDC.org](mailto:george.entis@LAEDC.org)

For media inquiries please contact:

**Lawren Markle**

Director of Public Relations and Marketing

Los Angeles County Economic Development Corporation

444 S. Flower Street, 37<sup>th</sup> Floor

Los Angeles, CA 90071

Tel: (213) 236-4847

Email: [lawren.markle@LAEDC.org](mailto:lawren.markle@LAEDC.org)



**LOS ANGELES COUNTY**  
ECONOMIC DEVELOPMENT CORPORATION