

Los Angeles County Business Outlook June 2015

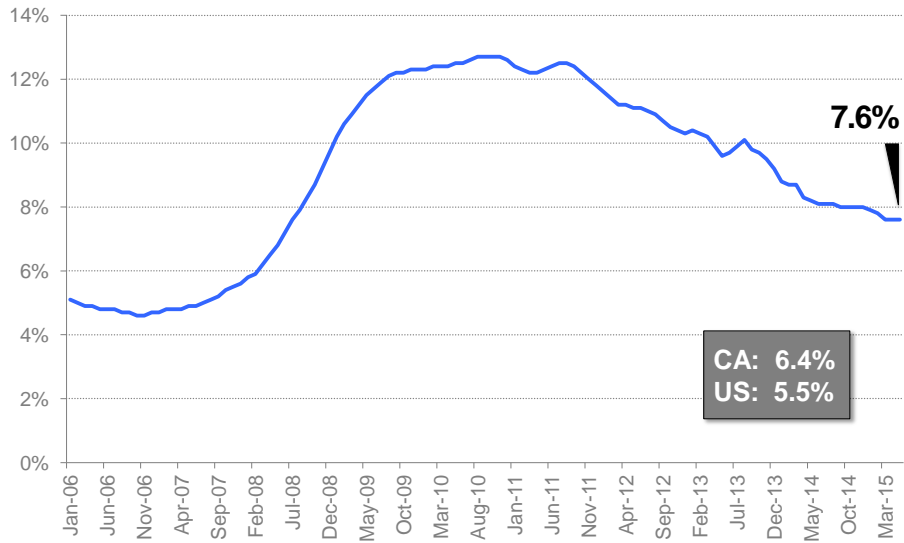
Business Scan

Kyser Center for Economic Research

Indicator	Most Recent Period	Current Reading	Last Year's Reading	YTY Change
Unemployment Rate	May-15	7.6%	8.2%	-0.6%
Nonfarm Employment (# of jobs)	May-15	4,318,500	4,218,000	2.4%
Port Container Traffic (TEU's)	May-15	1,330,041	1,288,651	3.2%
Goods Movement Employment	May-15	383,800	371,800	3.2%
Airport Passenger Traffic (# of passengers)	Apr-15	6,474,948	6,308,858	2.6%
Technology Employment	May-15	192,700	191,500	0.6%
Fashion Employment	May-15	78,900	77,200	2.2%
Professional Services Employment	May-15	312,500	311,300	0.4%
Finance and Insurance Employment	May-15	132,700	132,900	-0.2%
Health Services Employment	May-15	651,800	630,100	3.4%
Single Family Housing Construction Permits	Apr-14	318	422	-104
Multifamily Housing Construction Permits	Apr-14	697	2,517	-1820
Construction Employment	May-15	127,100	119,600	6.3%
Industrial Vacancy Rates	Q1-15	3.1%	4.1%	-1.0%
Film Production Days (excluding Commercials)	Q4-14	11,502	12,036	-4.4%
Tourism (Revenue Per Available Room)	Mar-15	\$157.06	\$143.12	9.7%

Unemployment Rate

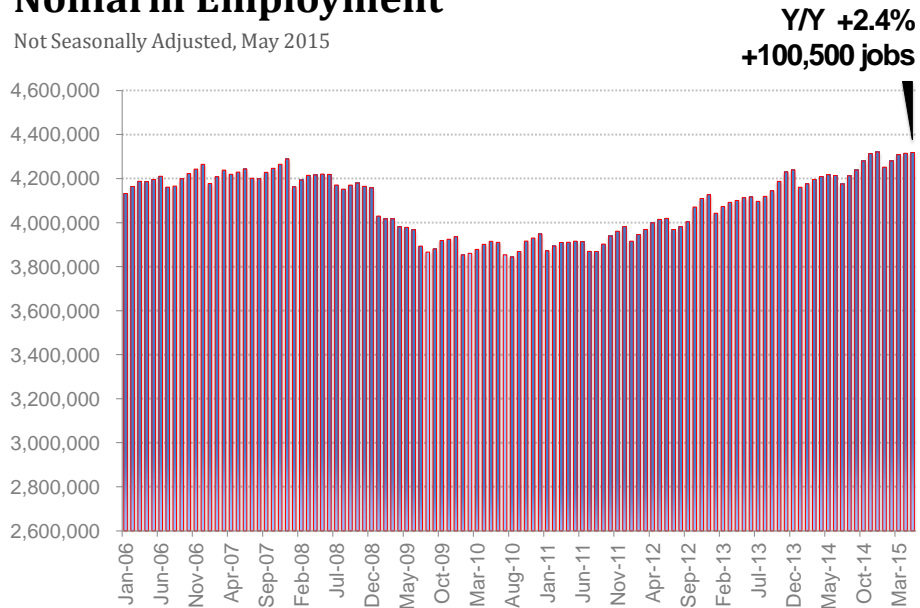
Seasonally Adjusted, May 2015



Source: California EDD, Labor Market Information Division

Nonfarm Employment

Not Seasonally Adjusted, May 2015

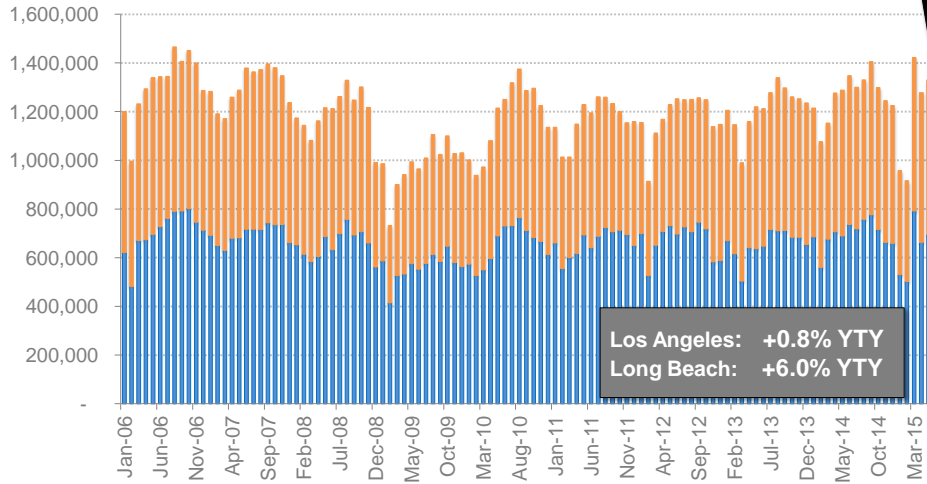


Source: California EDD, Labor Market Information Division

Port Container Traffic - Los Angeles & Long Beach

Ton Equivalent Units (TEUs), May 2015

YTY: +3.2%

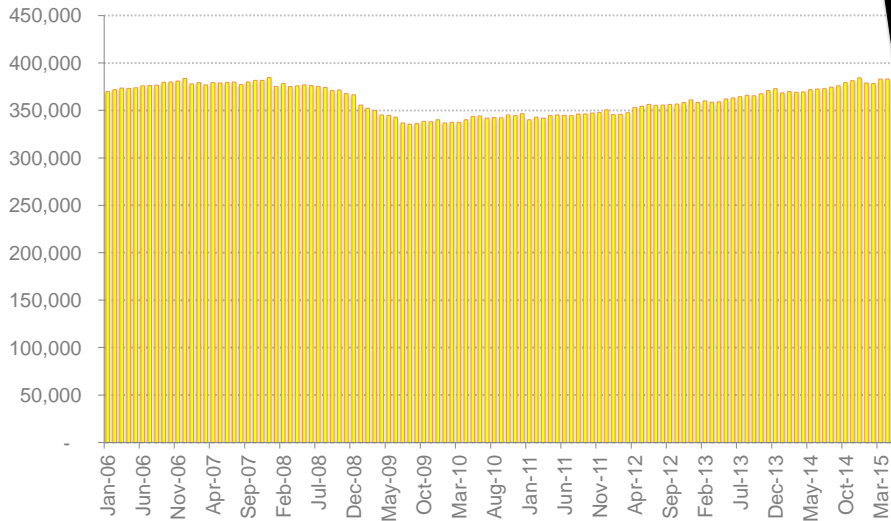


Sources: Port of Los Angeles, Port of Long Beach

Goods Movement Employment*

Not Seasonally Adjusted, May 2015

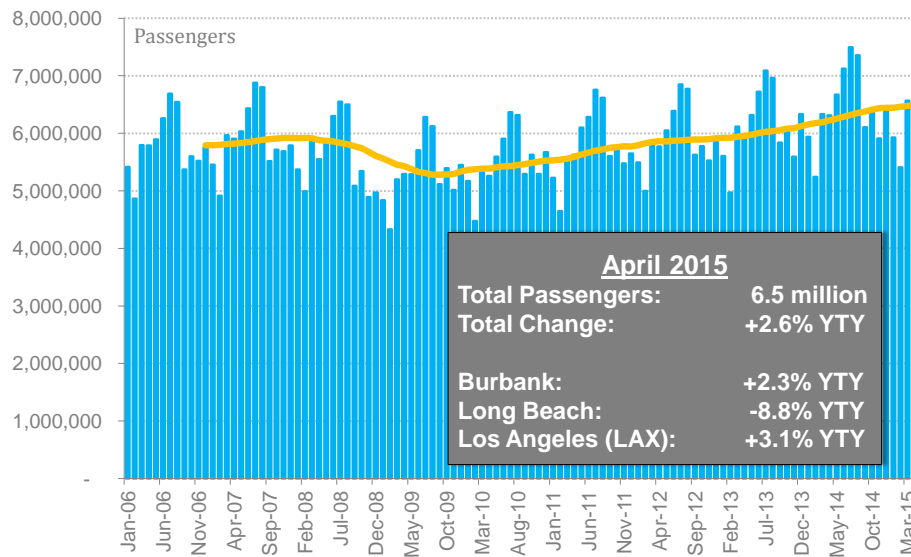
YY +3.2%
+12,000 jobs



Source: California EDD, Labor Market Information Division

*NAICS Codes: 41-000000, 43-400089 (Transportation and Warehousing; Wholesale Trade)

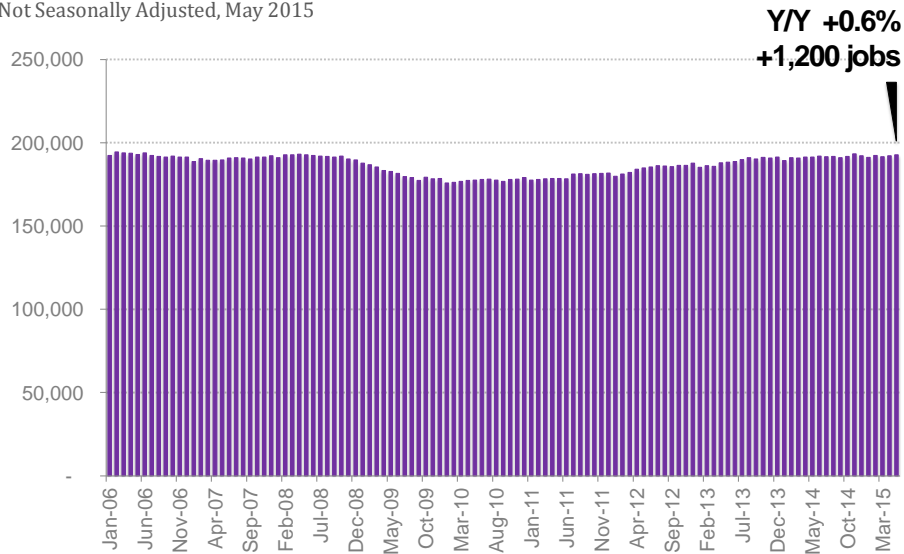
Airport Passenger Traffic -- Burbank, Long Beach & Los Angeles



Sources: Burbank Bob Hope Airport, Long Beach Airport, Los Angeles International Airport

Technology Employment

Not Seasonally Adjusted, May 2015

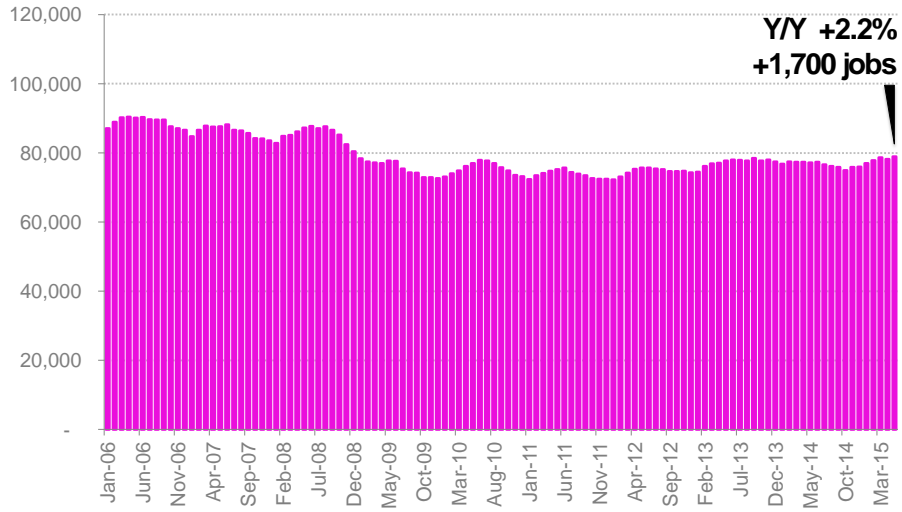


Source: California EDD, Labor Market Information Division

NAICS Codes: 31-334000, 31-336400, 32-325400, 50-518000, 60-541500, 60-541600, 60-541700

Fashion Employment

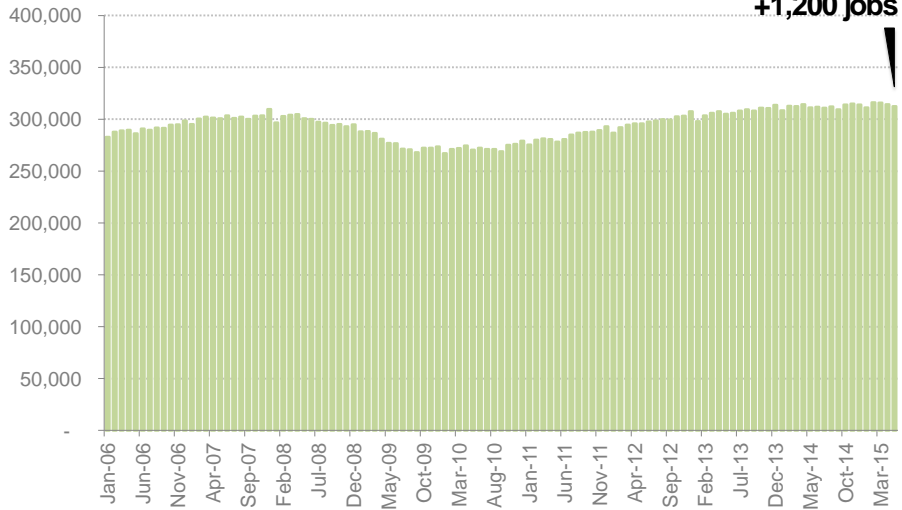
Not Seasonally Adjusted, May 2015



Source: California EDD, Labor Market Information Division
NAICS Codes: 32-315000, 41-424300, 32-313000

Professional Services Employment

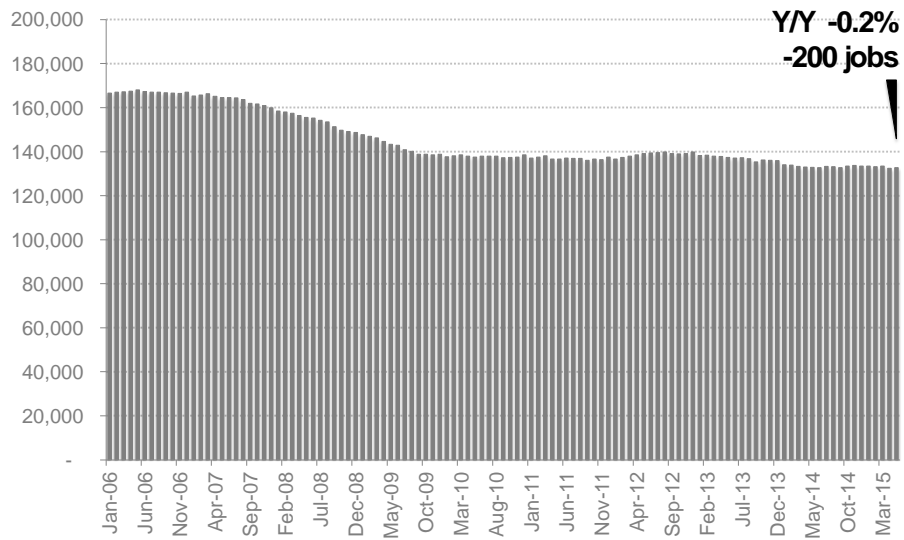
Not Seasonally Adjusted, May 2015



Source: California EDD, Labor Market Information Division
NAICS Codes: 60-540000, 60-541500

Finance and Insurance Employment

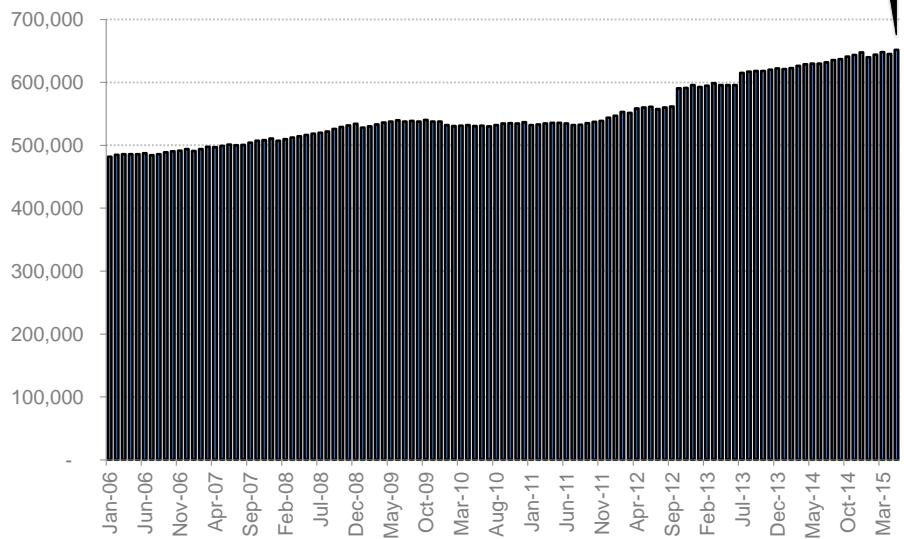
Not Seasonally Adjusted, May 2015



Source: California EDD, Labor Market Information Division

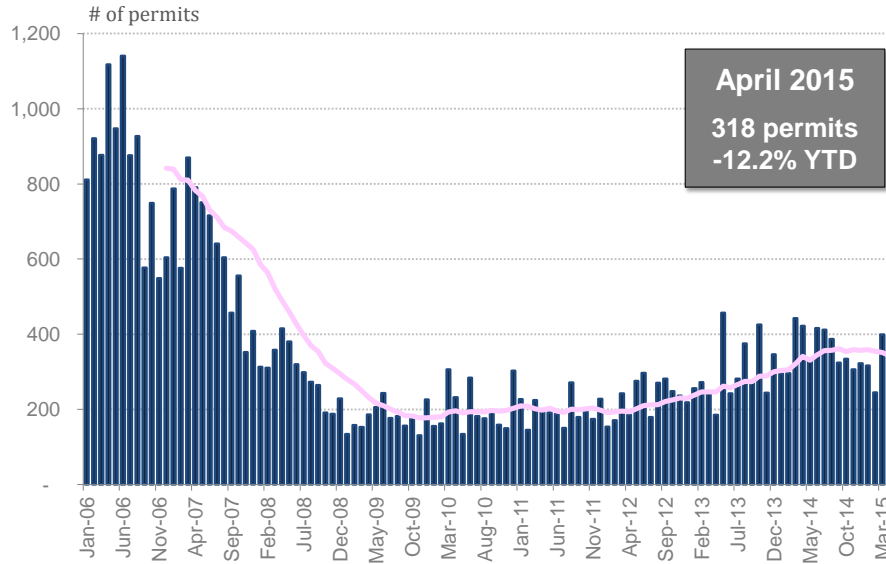
Health Services Employment

Not Seasonally Adjusted, May 2015



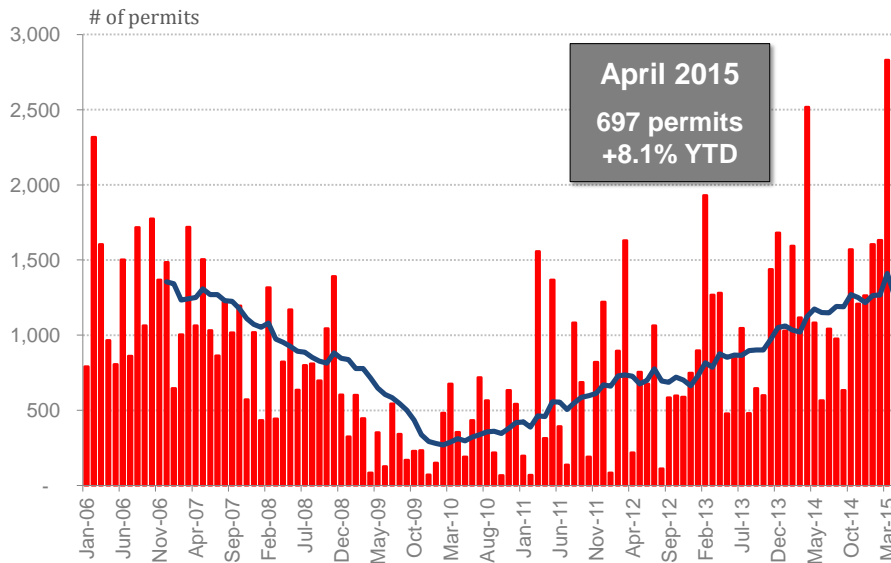
Source: California EDD, Labor Market Information Division

Single Family Housing Construction Permits



Source: CIRB, California Home Building Foundation

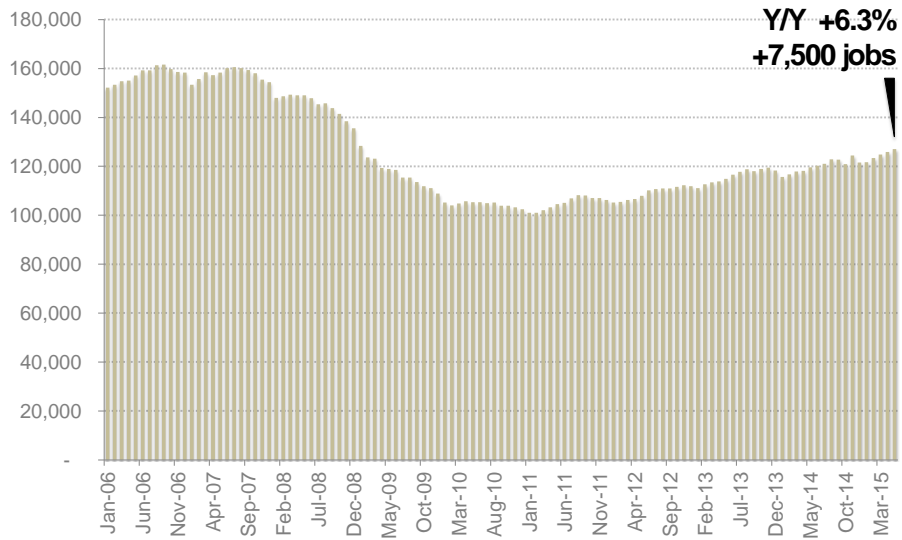
Multi Family Housing Construction Permits



Source: CIRB, California Home Building Foundation

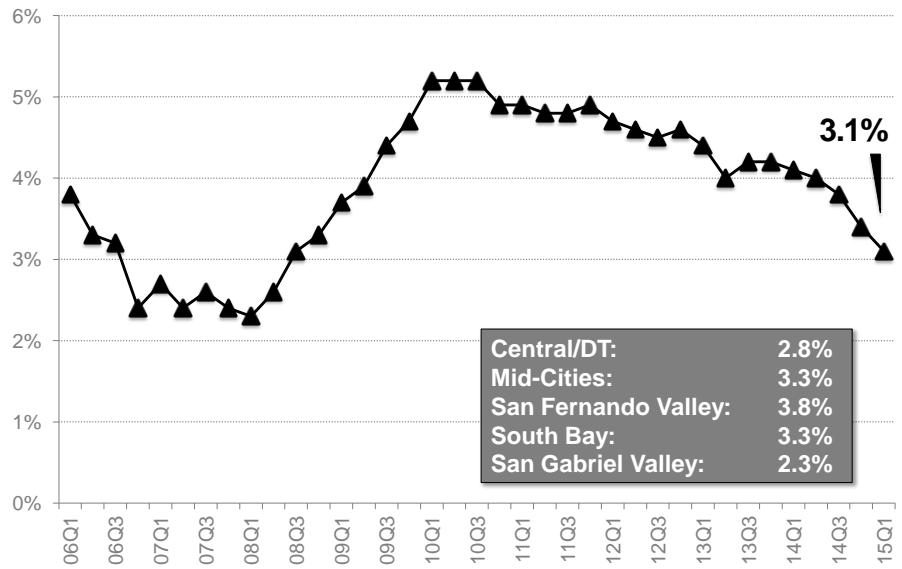
Construction Employment

Not Seasonally Adjusted, May 2015



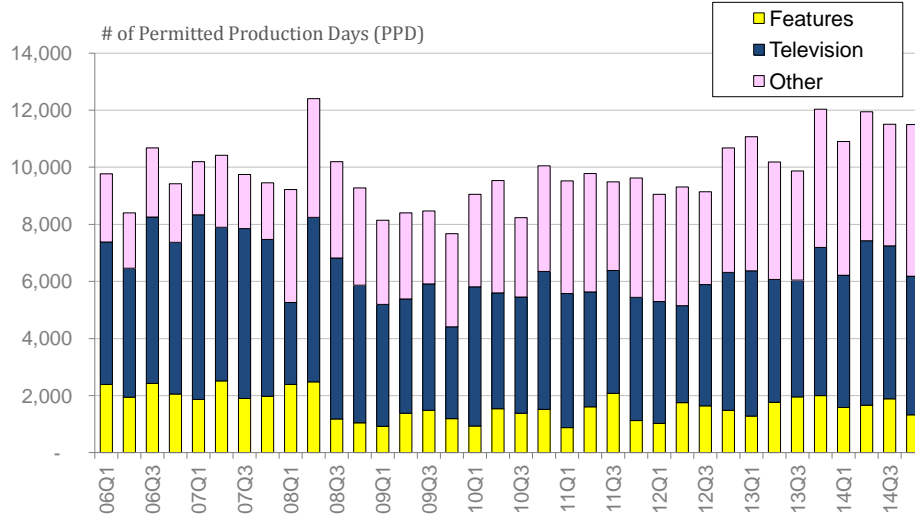
Source: California EDD, Labor Market Information Division

Industrial Vacancy Rates Q1 2015



Source: Cushman & Wakefield

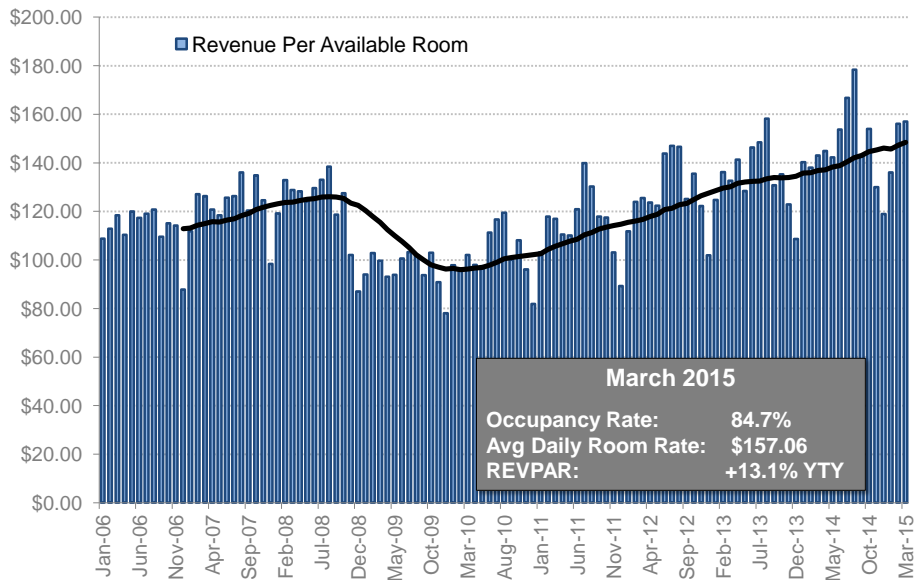
Film Production Days



Source: Film L.A.

* In 2014, the Association of Independent Commercial Producers (AICP) recently requested that Film L.A. look at its methodology for measuring commercial production, therefore data points for commercials are excluded from this chart. In January 2015, Film L.A. changed their production tracking methodology to look at the number of "Shoot Days" instead of "Permitted Production Days". This change will be incorporated into the February 2015 edition of "Business Scan".

Tourism



Source: PKF Consulting

For data inquiries please contact:

George Entis

Research Analyst

Kyser Center for Economic Research, LAEDC

444 S. Flower Street, 37th Floor

Los Angeles, CA 90071

Tel: (213) 236-4820

Email: george.entis@LAEDC.org

For media inquiries please contact:

Lawren Markle

Director of Public Relations and Marketing

Los Angeles County Economic Development Corporation

444 S. Flower Street, 37th Floor

Los Angeles, CA 90071

Tel: (213) 236-4847

Email: lawren.markle@LAEDC.org



LOS ANGELES COUNTY
ECONOMIC DEVELOPMENT CORPORATION