



# Los Angeles County Business Outlook March 2015

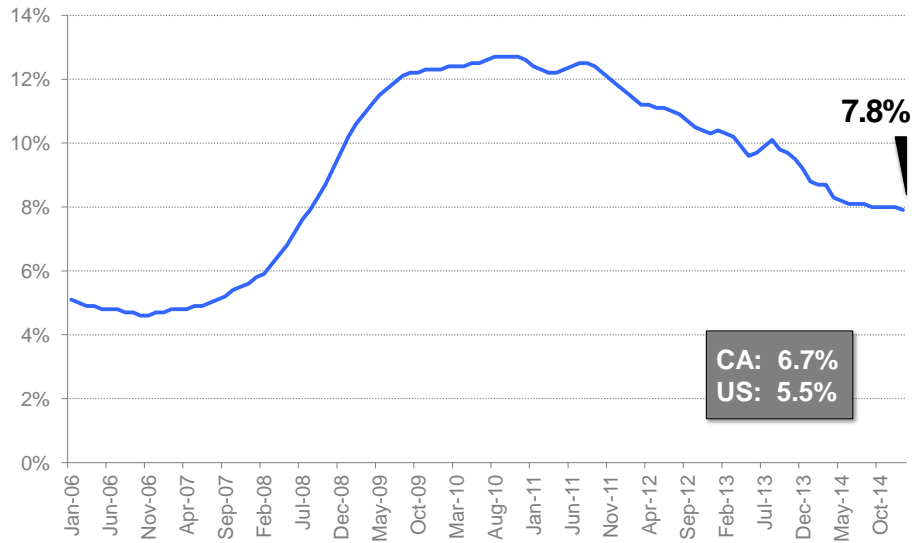
## Business Scan

Kyser Center for Economic Research

Indicator	Most Recent Period	Current Reading	Last Year's Reading	YTY Change
Unemployment Rate	Feb-15	7.8%	8.7%	-0.9%
Nonfarm Employment (# of jobs)	Feb-15	4,277,600	4,176,500	2.4%
Port Container Traffic (TEU's)	Feb-15	915,777	1,076,959	-15.0%
Transportation and Warehousing Employment	Feb-15	150,700	148,600	1.4%
Airport Passenger Traffic (# of passengers)	Jan-15	5,926,325	5,934,666	-0.1%
Technology Employment	Feb-15	192,900	191,100	0.9%
Fashion Employment	Feb-15	77,800	77,500	0.4%
Professional Services Employment	Feb-15	316,500	312,800	1.2%
Finance and Insurance Employment	Feb-15	132,800	133,900	-0.8%
Health Services Employment	Feb-15	642,900	623,000	3.2%
Single Family Housing Construction Permits	Jan-14	316	295	21
Multifamily Housing Construction Permits	Jan-14	1,605	1,030	575
Construction Employment	Feb-15	123,600	116,700	5.9%
Industrial Vacancy Rates	Q4-14	3.4%	4.2%	-0.8%
Film Production Days (excluding Commercials)	Q4-14	11,502	12,036	-4.4%
Tourism (Revenue Per Available Room)	Dec-14	\$118.95	\$108.72	9.4%

# Unemployment Rate

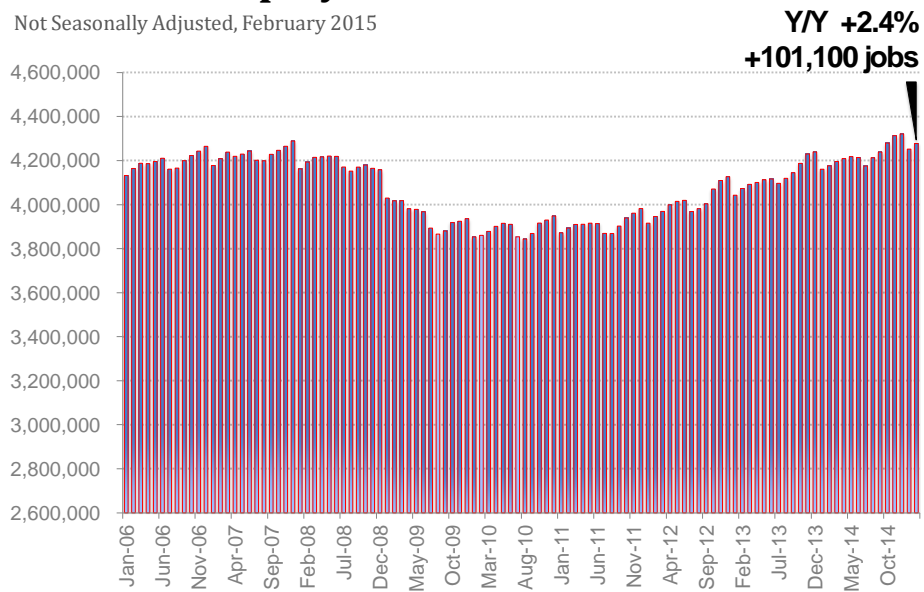
Seasonally Adjusted, February 2015



Source: California EDD, Labor Market Information Division

# Nonfarm Employment

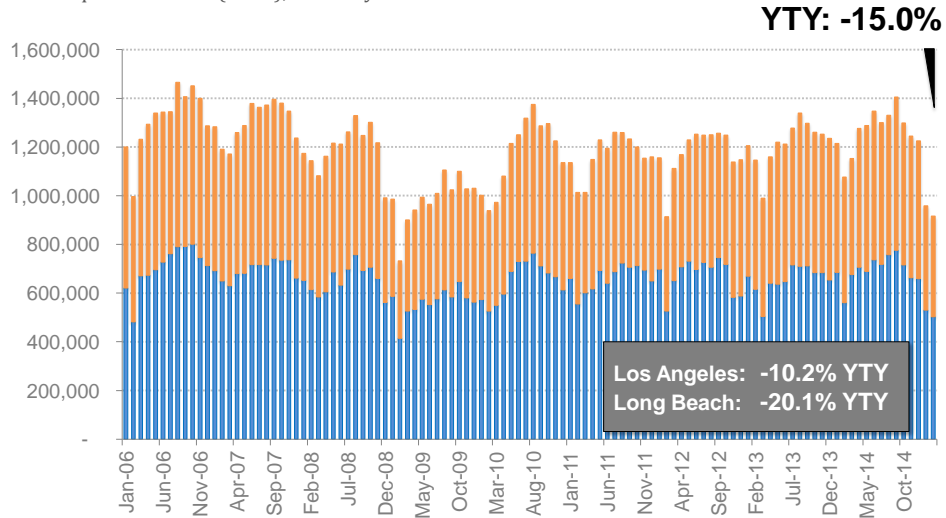
Not Seasonally Adjusted, February 2015



Source: California EDD, Labor Market Information Division

# Port Container Traffic - Los Angeles & Long Beach

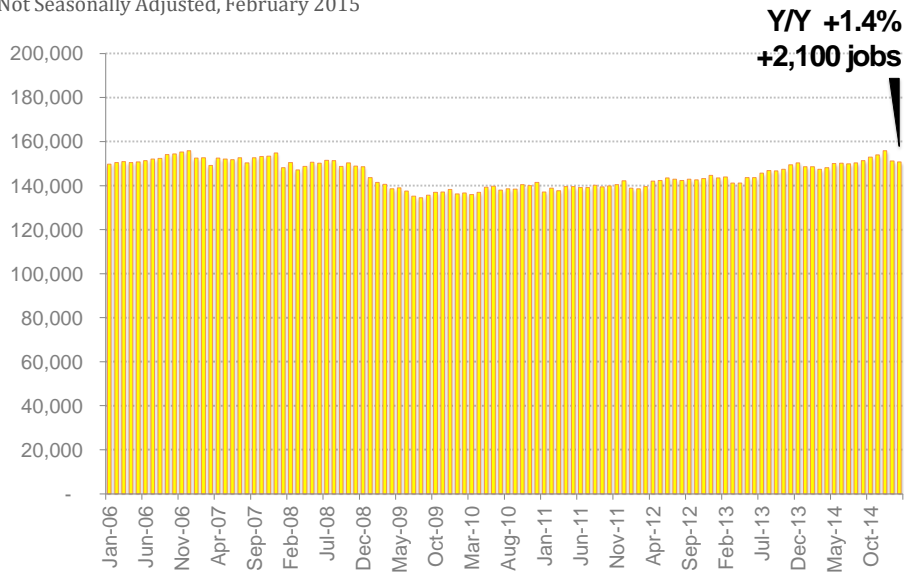
Ton Equivalent Units (TEUs), February 2015



Sources: Port of Los Angeles, Port of Long Beach

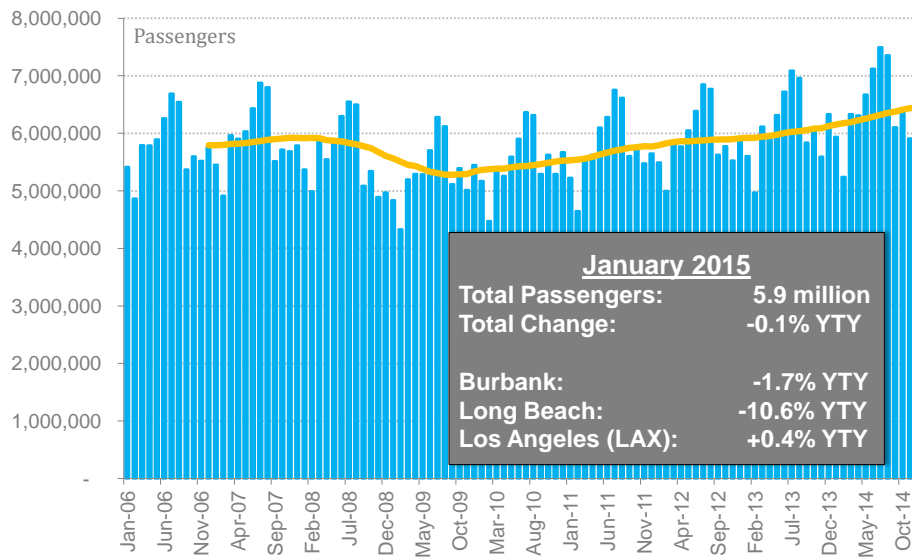
# Transportation & Warehousing Employment

Not Seasonally Adjusted, February 2015



Source: California EDD, Labor Market Information Division

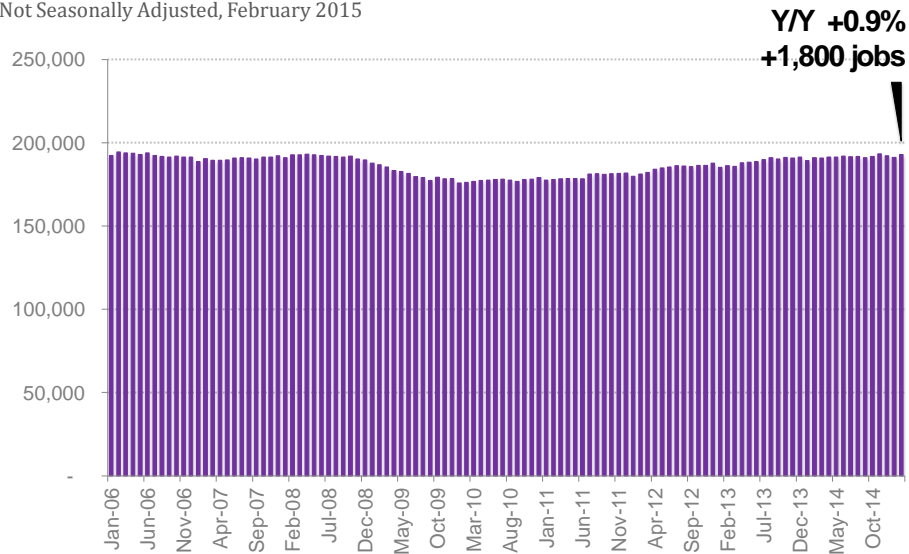
## Airport Passenger Traffic -- Burbank, Long Beach & Los Angeles



Sources: Burbank Bob Hope Airport, Long Beach Airport, Los Angeles International Airport

## Technology Employment

Not Seasonally Adjusted, February 2015

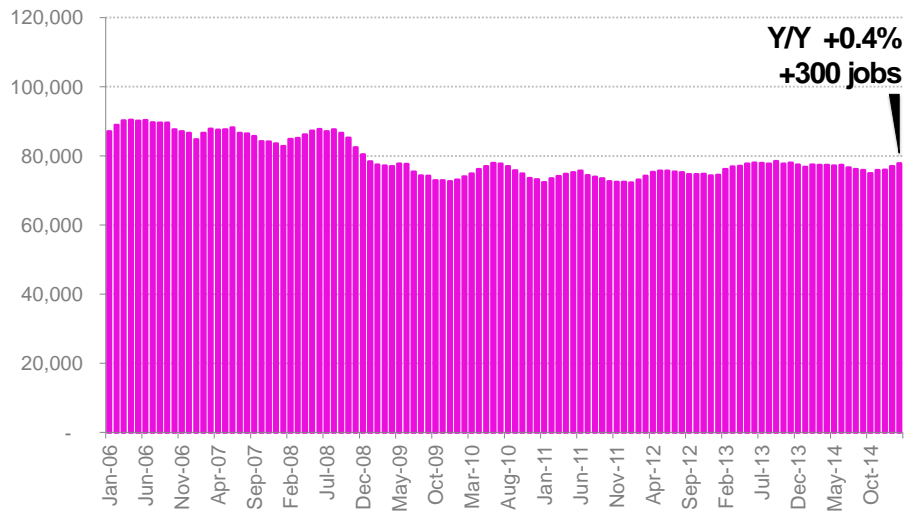


Source: California EDD, Labor Market Information Division

NAICS Codes: 31-334000, 31-336400, 32-325400, 50-518000, 60-541500, 60-541600, 60-541700

# Fashion Employment

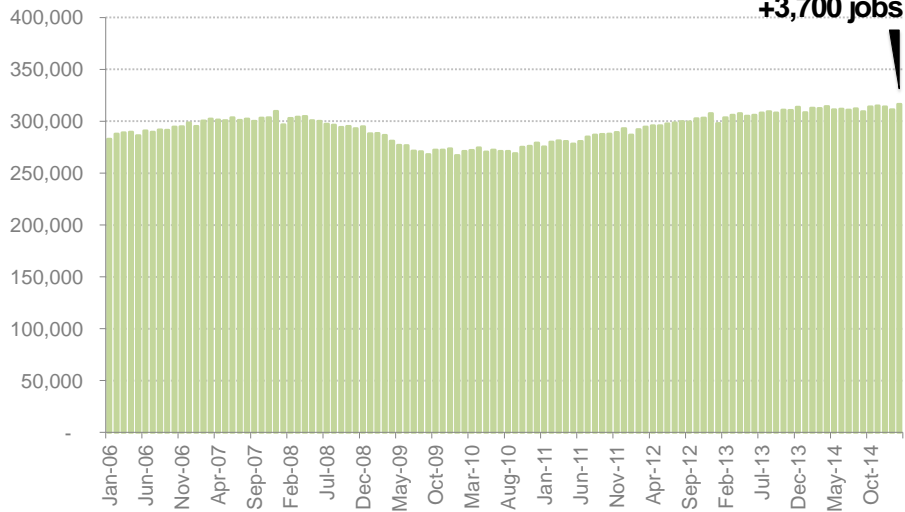
Not Seasonally Adjusted, February 2015



Source: California EDD, Labor Market Information Division  
NAICS Codes: 32-315000, 41-424300, 32-313000

# Professional Services Employment

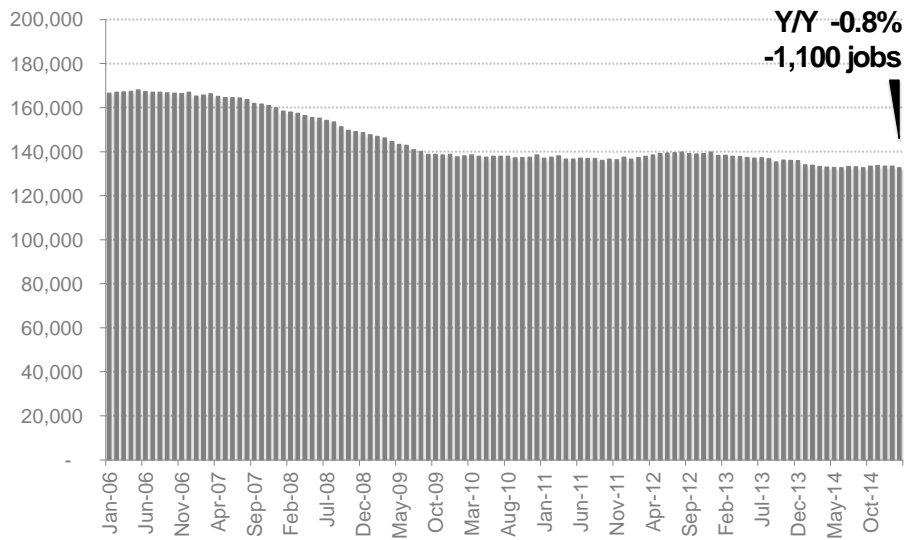
Not Seasonally Adjusted, February 2015



Source: California EDD, Labor Market Information Division  
NAICS Codes: 60-540000, 60-541500

# Finance and Insurance Employment

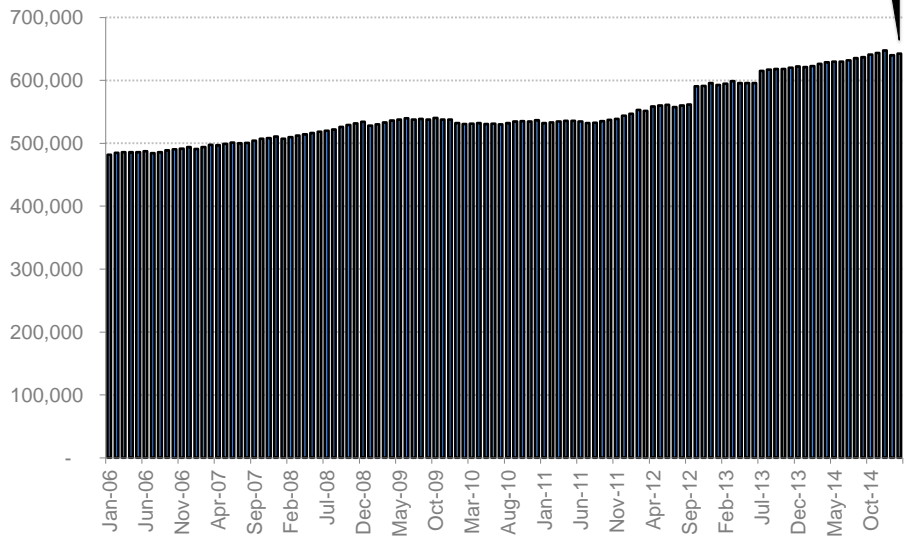
Not Seasonally Adjusted, February 2015



Source: California EDD, Labor Market Information Division

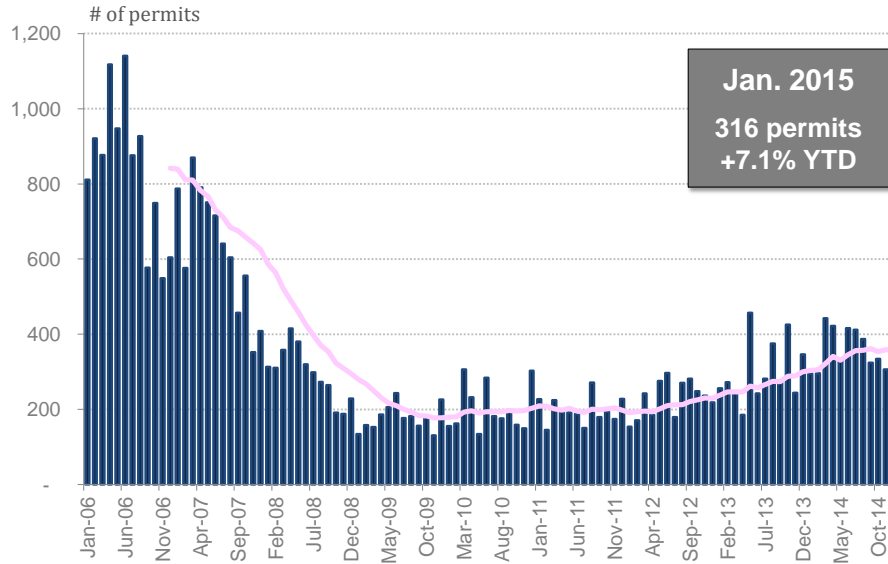
# Health Services Employment

Not Seasonally Adjusted, February 2015



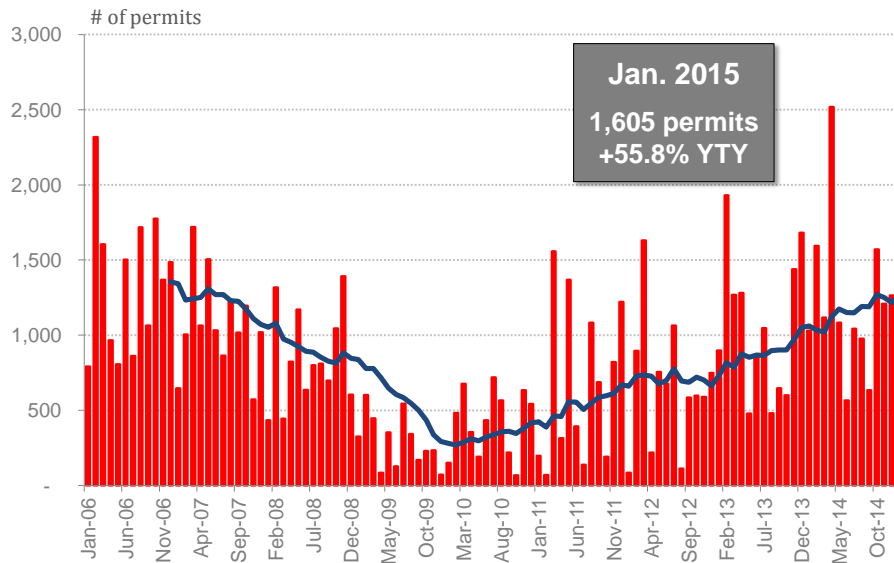
Source: California EDD, Labor Market Information Division

## Single Family Housing Construction Permits



Source: CIRB, California Home Building Foundation

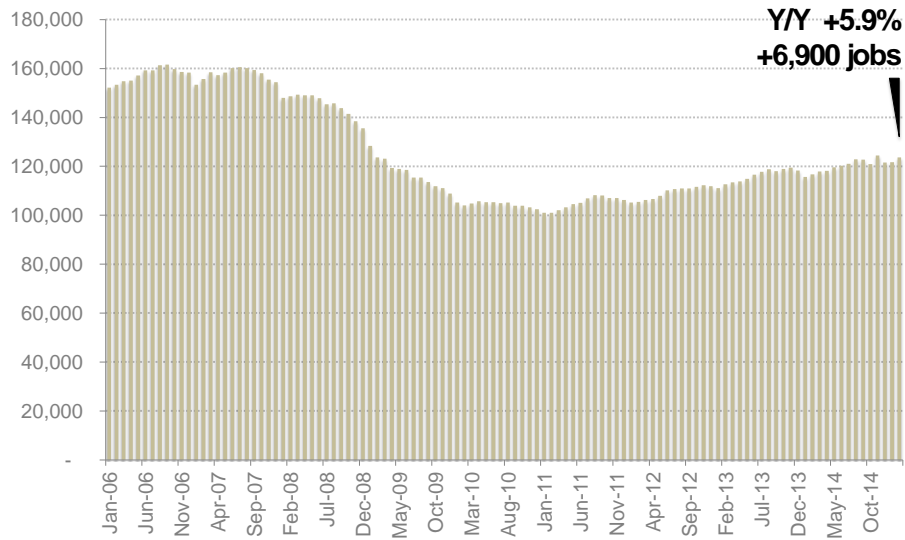
## Multi Family Housing Construction Permits



Source: CIRB, California Home Building Foundation

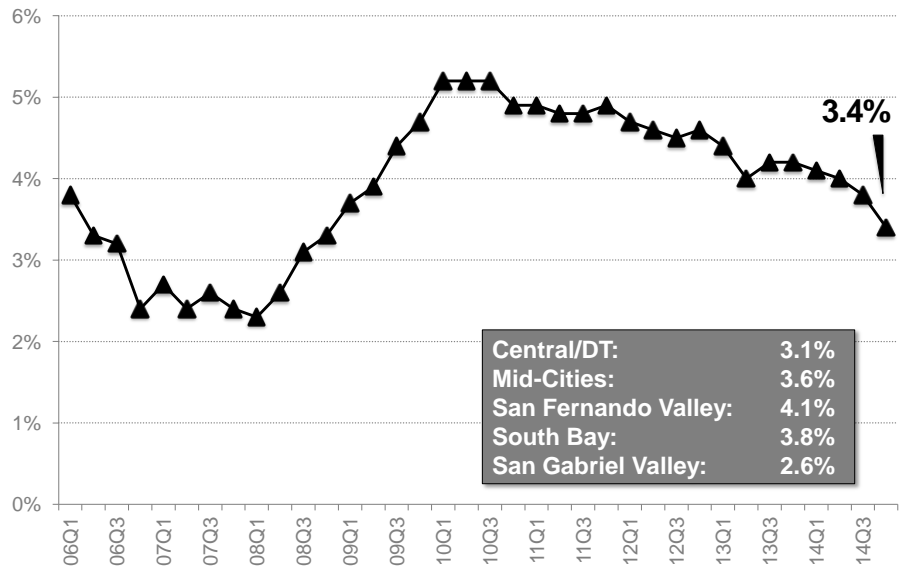
# Construction Employment

Not Seasonally Adjusted, February 2015



Source: California EDD, Labor Market Information Division

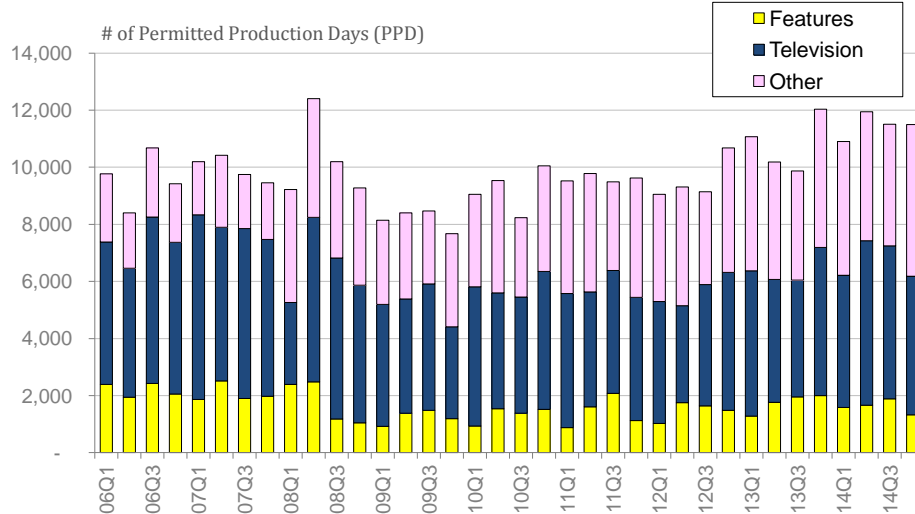
# Industrial Vacancy Rates Q4 2014



Source: Cushman & Wakefield



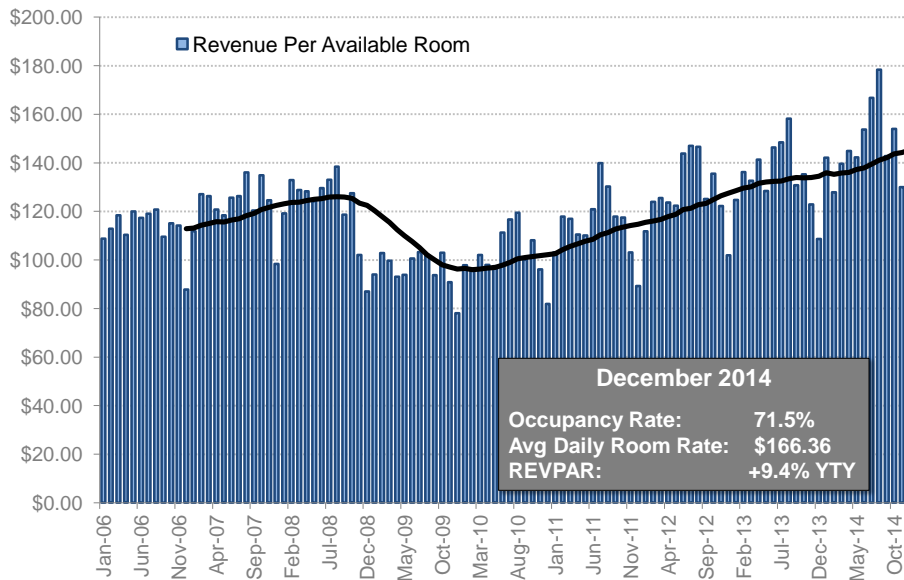
## Film Production Days



Source: Film L.A.

*\* In 2014, the Association of Independent Commercial Producers (AICP) recently requested that Film L.A. look at its methodology for measuring commercial production, therefore data points for commercials are excluded from this chart. In January 2015, Film L.A. changed their production tracking methodology to look at the number of "Shoot Days" instead of "Permitted Production Days". This change will be incorporated into the February 2015 edition of "Business Scan".*

## Tourism



Source: PKF Consulting

For data inquiries please contact:

**George Entis**

Research Analyst

Kyser Center for Economic Research, LAEDC

444 S. Flower Street, 37<sup>th</sup> Floor

Los Angeles, CA 90071

Tel: (213) 236-4820

Email: [george.entis@LAEDC.org](mailto:george.entis@LAEDC.org)

For media inquiries please contact:

**Lawren Markle**

Director of Public Relations and Marketing

Los Angeles County Economic Development Corporation

444 S. Flower Street, 37<sup>th</sup> Floor

Los Angeles, CA 90071

Tel: (213) 236-4847

Email: [lawren.markle@LAEDC.org](mailto:lawren.markle@LAEDC.org)



**LOS ANGELES COUNTY**  
ECONOMIC DEVELOPMENT CORPORATION