

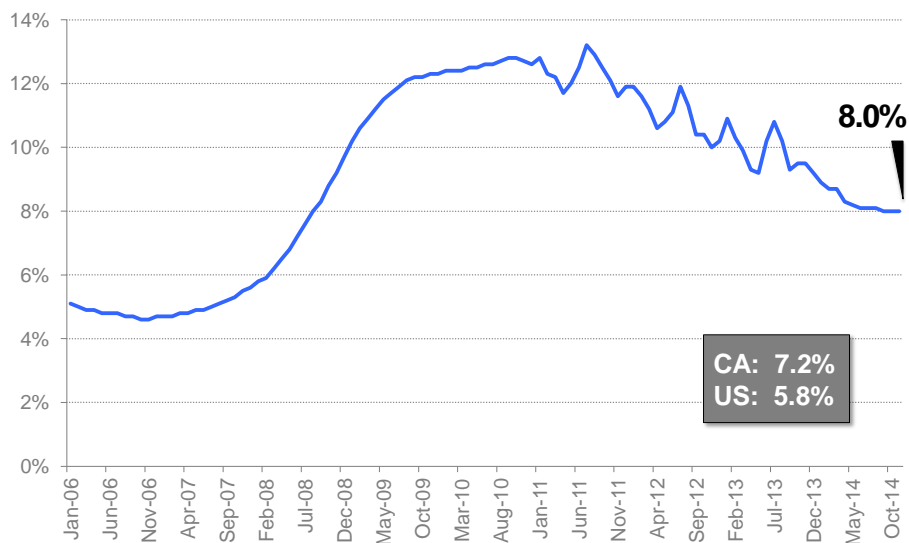
# Business Scan

## LOS ANGELES COUNTY BUSINESS OUTLOOK DECEMBER 2014

Indicator	Most Recent Period	Current Reading	Last Year's Reading	Year/Year Change
Unemployment Rate	Nov-14	8.0%	9.5%	-1.5% ▼
Nonfarm Employment (# of jobs)	Nov-14	4,253,900	4,193,900	1.4% ▲
Port Container Traffic (TEU's)	Nov-14	1,244,860	1,253,448	-0.7% ▼
Transportation and Warehousing Employment	Nov-14	150,800	149,000	1.2% ▲
Airport Passenger Traffic (# of passengers)	Oct-14	6,423,565	6,055,387	6.1% ▲
Technology Employment	Nov-14	192,600	190,700	1.0% ▲
Fashion Employment	Nov-14	73,200	76,400	-4.2% ▼
Professional Services Employment	Nov-14	315,800	308,900	2.2% ▲
Finance and Insurance Employment	Nov-14	135,700	135,700	0.0% --
Health Services Employment	Nov-14	633,300	614,400	3.1% ▲
Single Family Housing Construction Permits	Oct-14	334	425	-91 ▼
Multifamily Housing Construction Permits	Oct-14	1,569	600	969 ▲
Construction Employment	Nov-14	128,700	122,600	5.0% ▲
Industrial Vacancy Rates	Q3-14	3.8%	4.2%	-0.4% ▼
Film Production Days (excluding Commercials)	Q3-14	11,511	9,867	16.7% ▲
Tourism (Revenue Per Available Room)	Sep-14	\$142.74	\$130.77	9.2% ▲

### Unemployment Rate

Seasonally Adjusted, November 2014

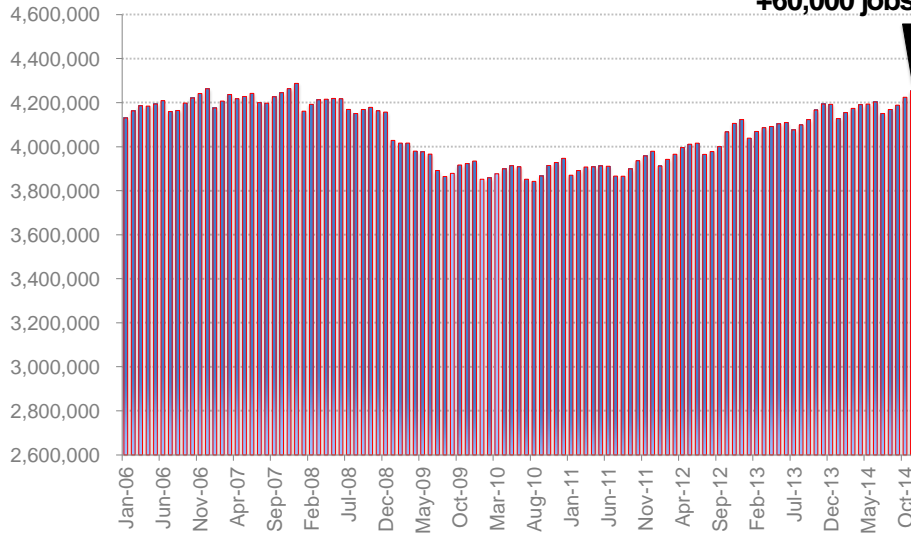


Source: California EDD, Labor Market Information Division

# Nonfarm Employment

Not Seasonally Adjusted, November 2014

**YY +1.4%**  
**+60,000 jobs**

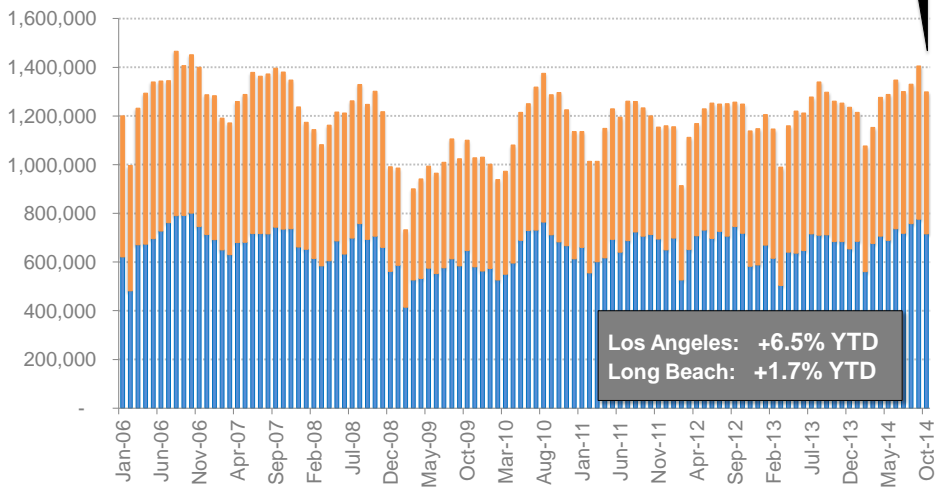


Source: California EDD, Labor Market Information Division

# Port Container Traffic - Los Angeles & Long Beach

Ton Equivalent Units (TEUs), November 2014

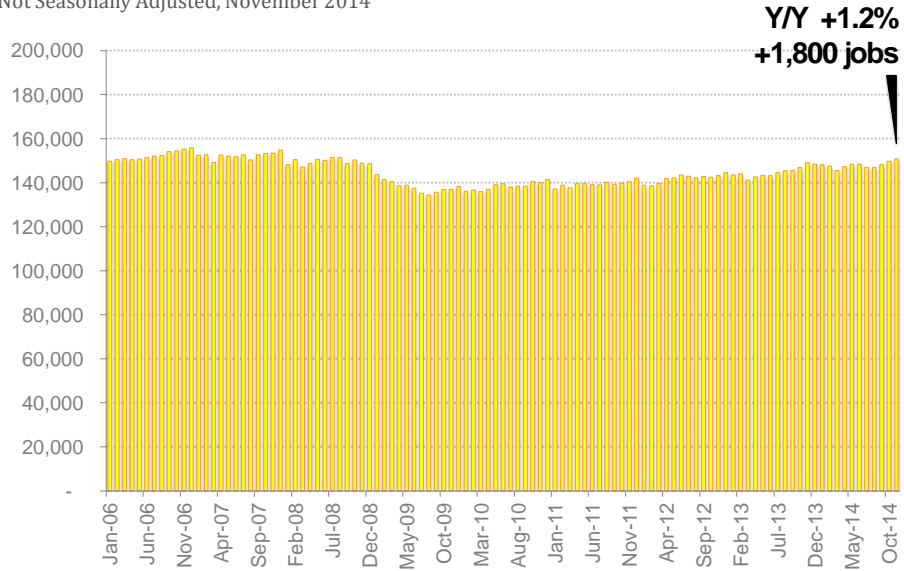
**YTY: -0.7%**  
**YTD: +4.3%**



Sources: Port of Los Angeles, Port of Long Beach

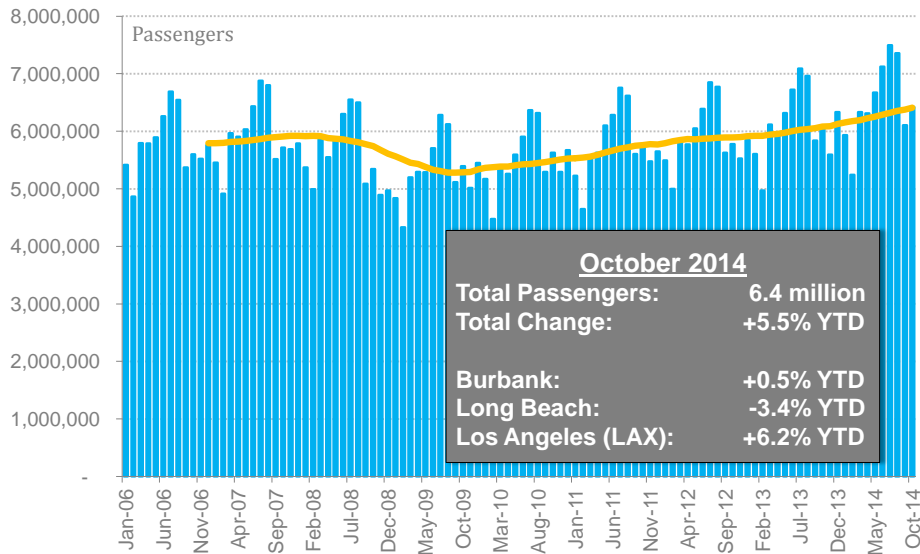
# Transportation & Warehousing Employment

Not Seasonally Adjusted, November 2014



Source: California EDD, Labor Market Information Division

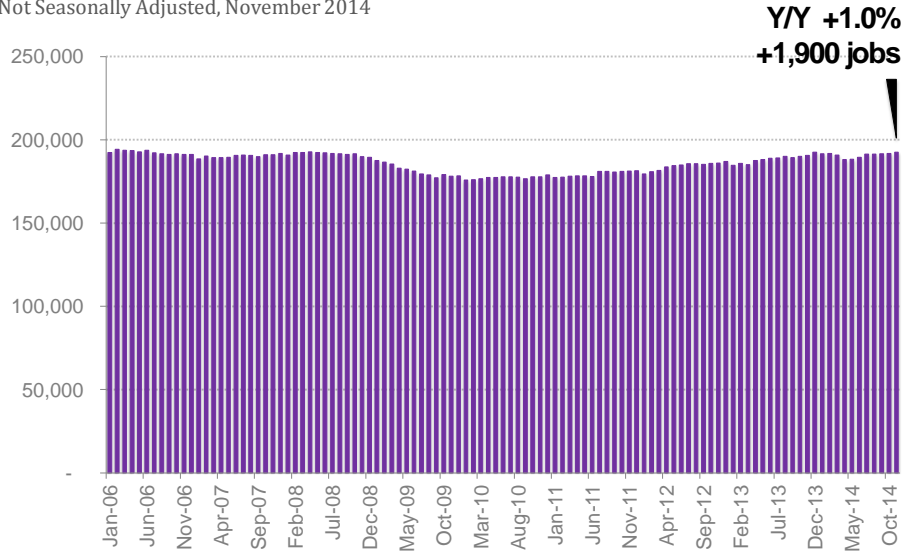
# Airport Passenger Traffic -- Burbank, Long Beach & Los Angeles



Sources: Burbank Bob Hope Airport, Long Beach Airport, Los Angeles International Airport

# Technology Employment

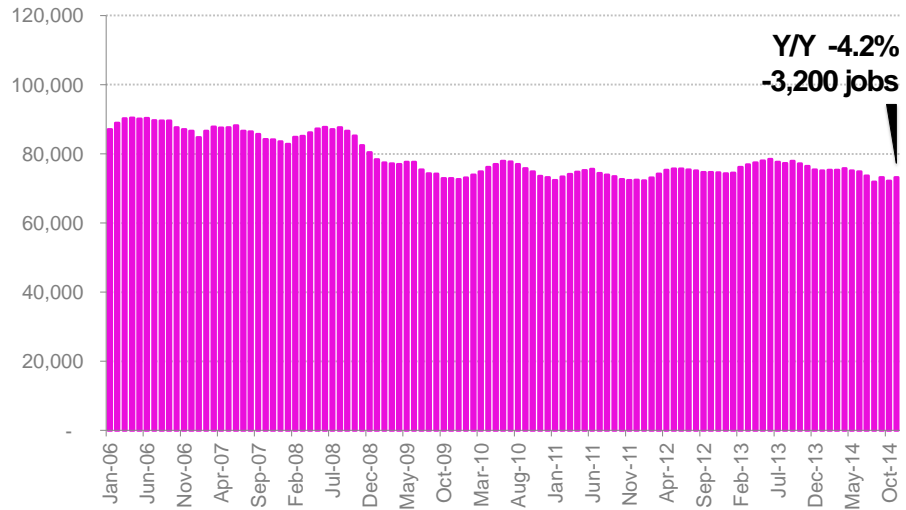
Not Seasonally Adjusted, November 2014



Source: California EDD, Labor Market Information Division  
NAICS Codes: 31-334000, 31-336400, 32-325400, 50-518000, 60-541500, 60-541600, 60-541700

# Fashion Employment

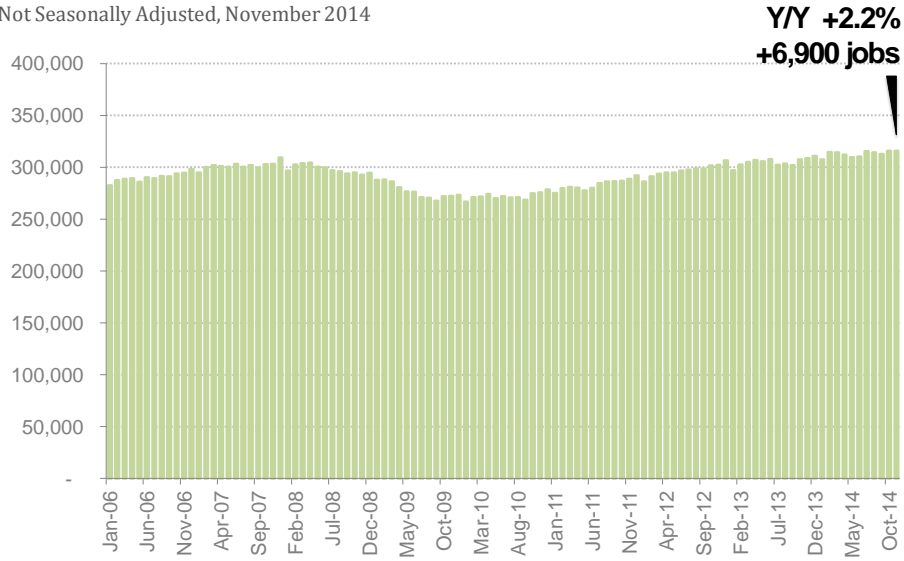
Not Seasonally Adjusted, November 2014



Source: California EDD, Labor Market Information Division  
NAICS Codes: 32-315000, 41-424300, 32-313000

# Professional Services Employment

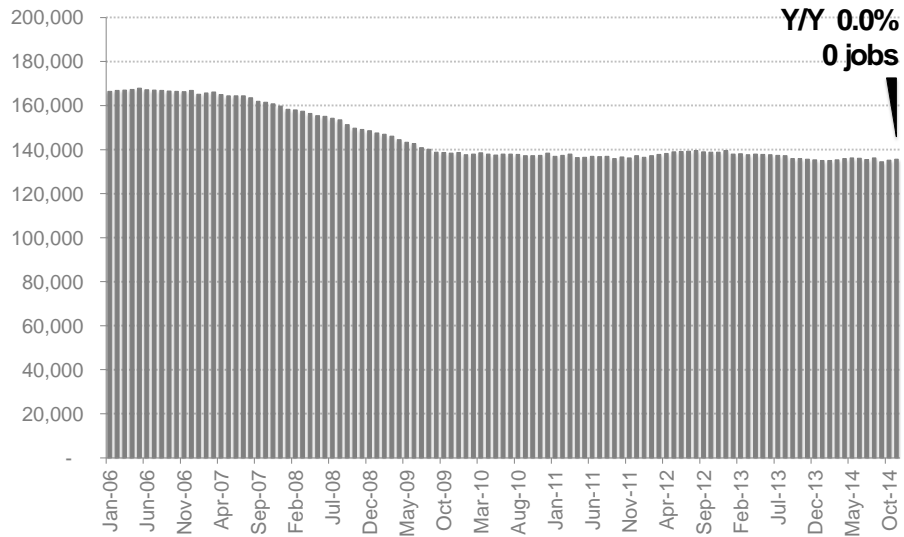
Not Seasonally Adjusted, November 2014



Source: California EDD, Labor Market Information Division  
NAICS Codes: 60-540000, 60-541500

# Finance and Insurance Employment

Not Seasonally Adjusted, November 2014

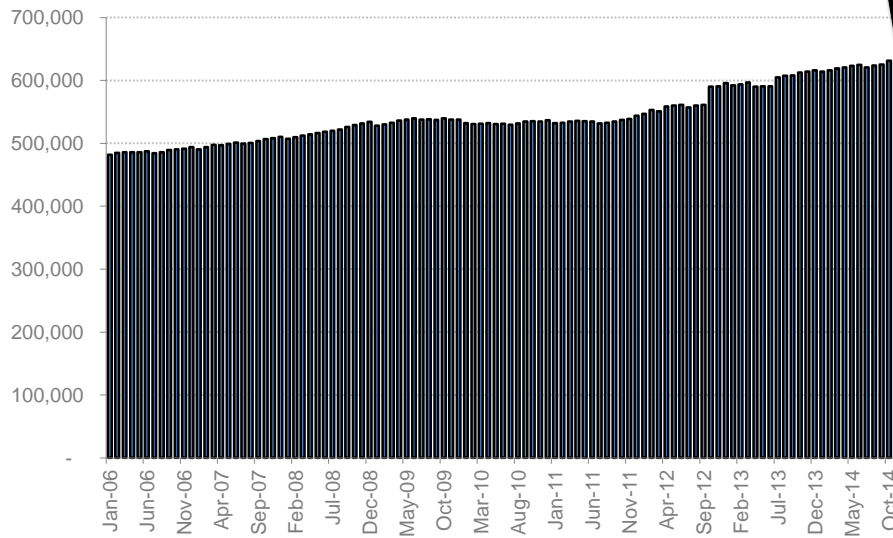


Source: California EDD, Labor Market Information Division

# Health Services Employment

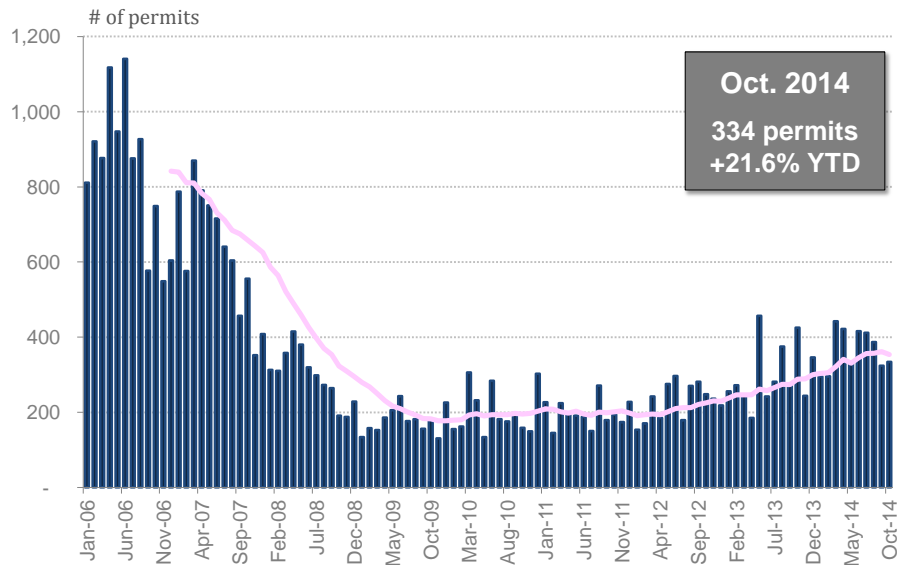
Not Seasonally Adjusted, November 2014

**Y/Y +3.1%**  
**+18,900 jobs**



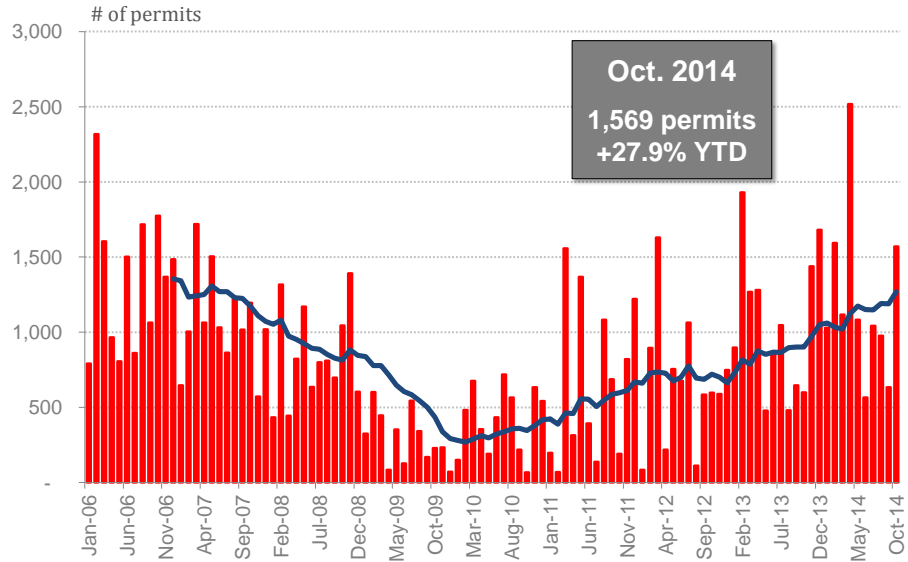
Source: California EDD, Labor Market Information Division

# Single Family Housing Construction Permits



Source: CIRB, California Home Building Foundation

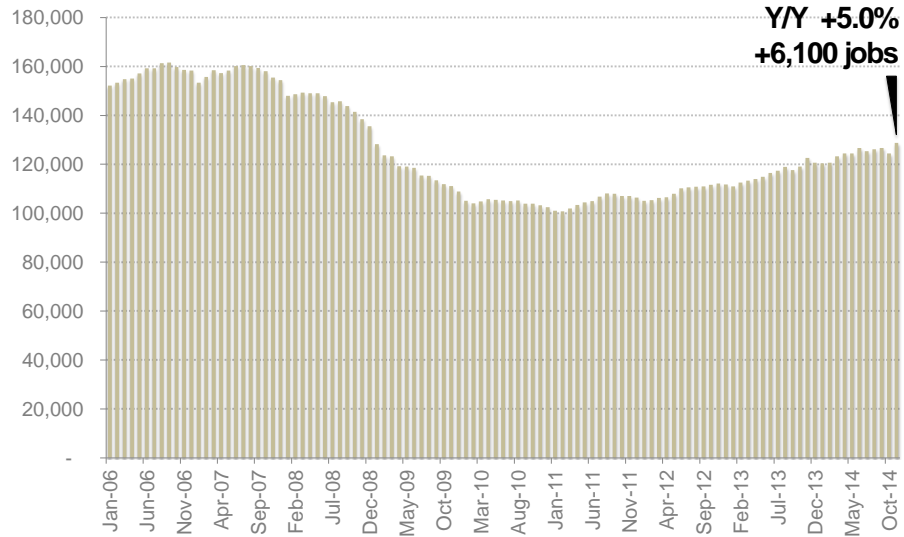
## Multi Family Housing Construction Permits



Source: CIRB, California Home Building Foundation

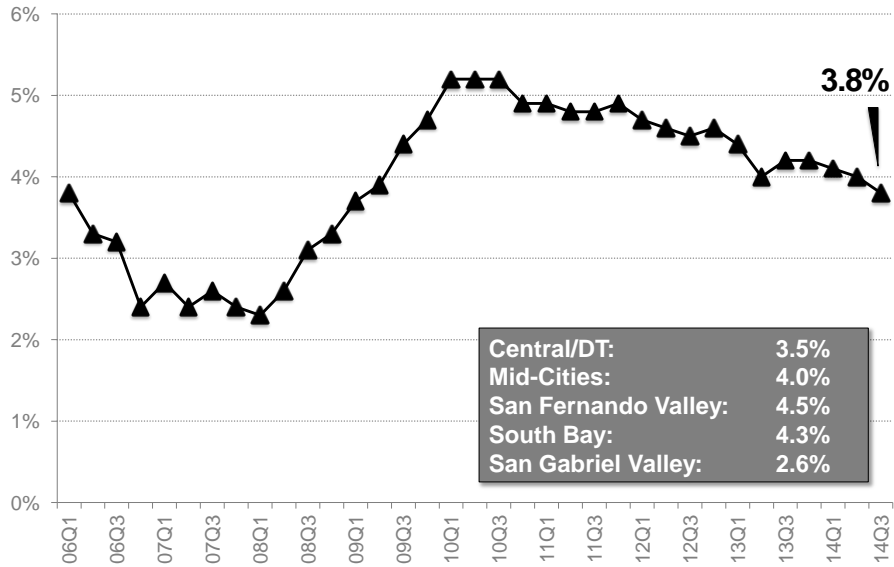
## Construction Employment

Not Seasonally Adjusted, November 2014



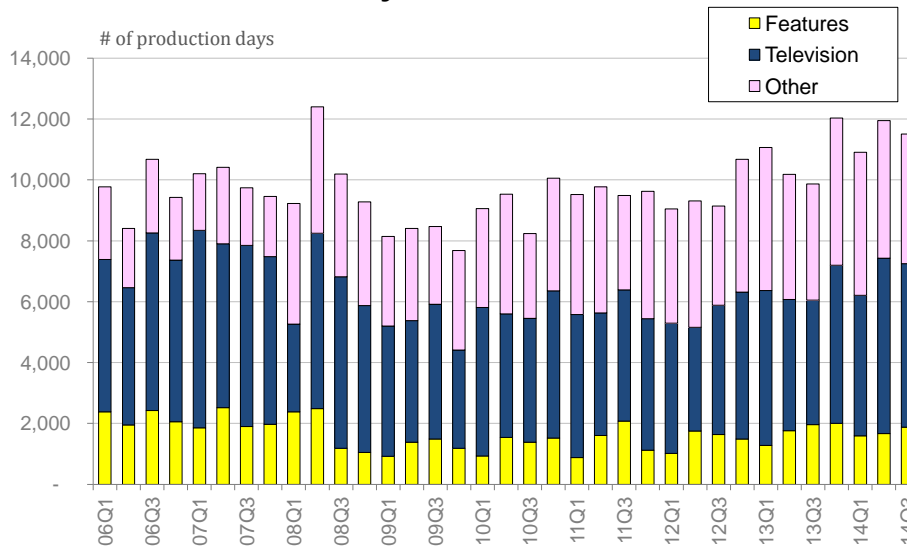
Source: California EDD, Labor Market Information Division

# Industrial Vacancy Rates Q3 2014



Source: Cushman & Wakefield

# Film Production Days

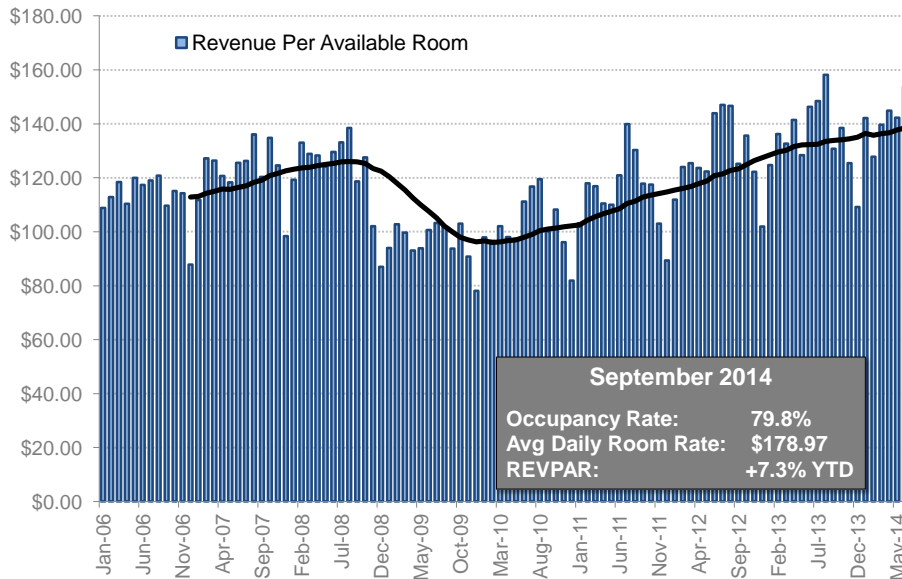


Source: Film L.A.

\* The Association of Independent Commercial Producers (AICP) recently requested that Film L.A. look at its methodology for measuring commercial production, therefore data points for commercials are excluded from this chart.



# Tourism



Source: PKF Consulting

For data inquiries please contact:

**George Entis**

Research Analyst

Kyser Center for Economic Research, LAEDC

444 S. Flower Street, 37<sup>th</sup> Floor

Los Angeles, CA 90071

Tel: (213) 236-4820

Email: [george.entis@LAEDC.org](mailto:george.entis@LAEDC.org)

For media inquiries please contact:

**Lawren Markle**

Director of Public Relations and Marketing

Los Angeles County Economic Development Corporation

444 S. Flower Street, 37<sup>th</sup> Floor

Los Angeles, CA 90071

Tel: (213) 236-4847

Email: [lawren.markle@LAEDC.org](mailto:lawren.markle@LAEDC.org)



**LOS ANGELES COUNTY**  
ECONOMIC DEVELOPMENT CORPORATION