



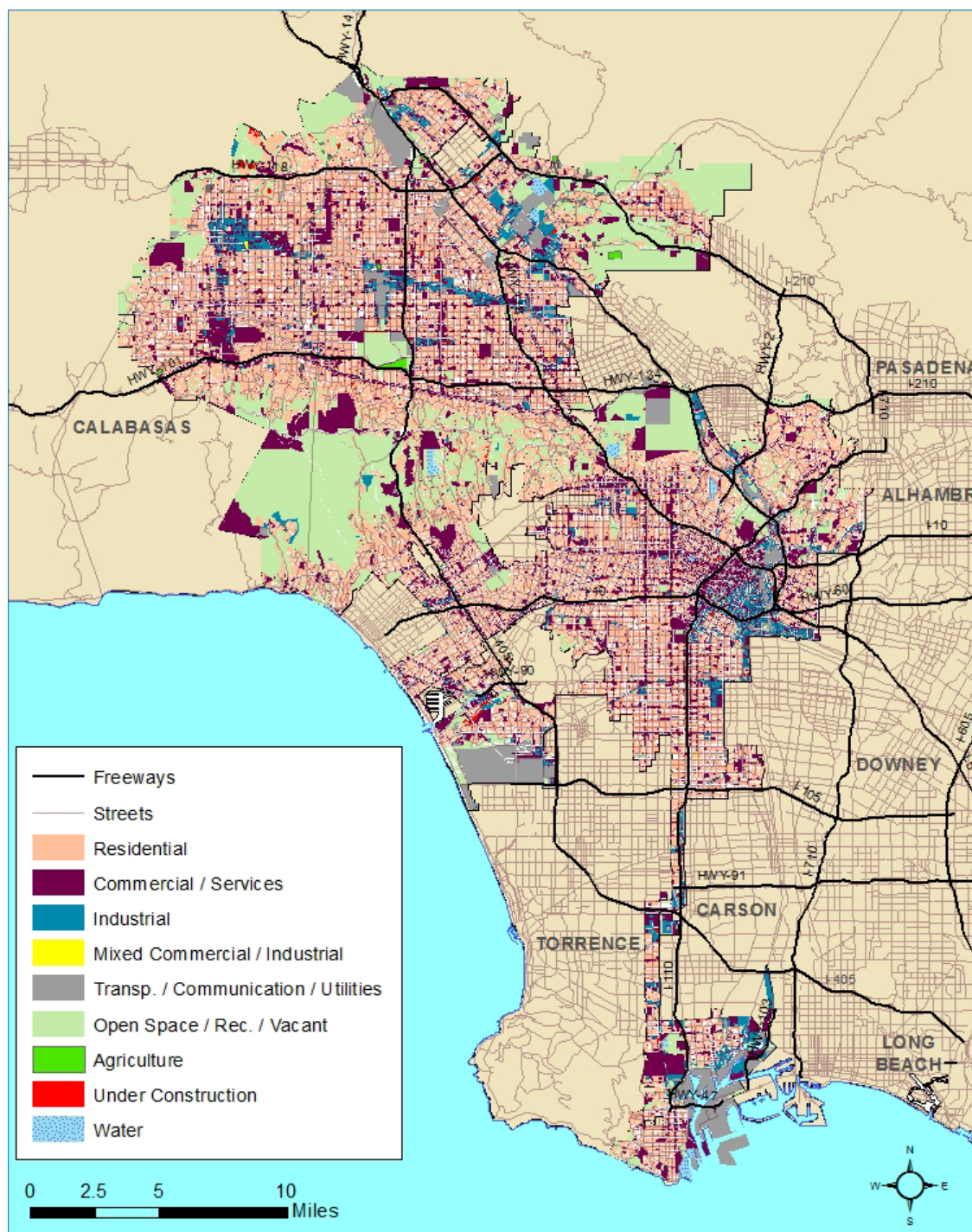
## APPENDICES



## A4 Land Use Maps

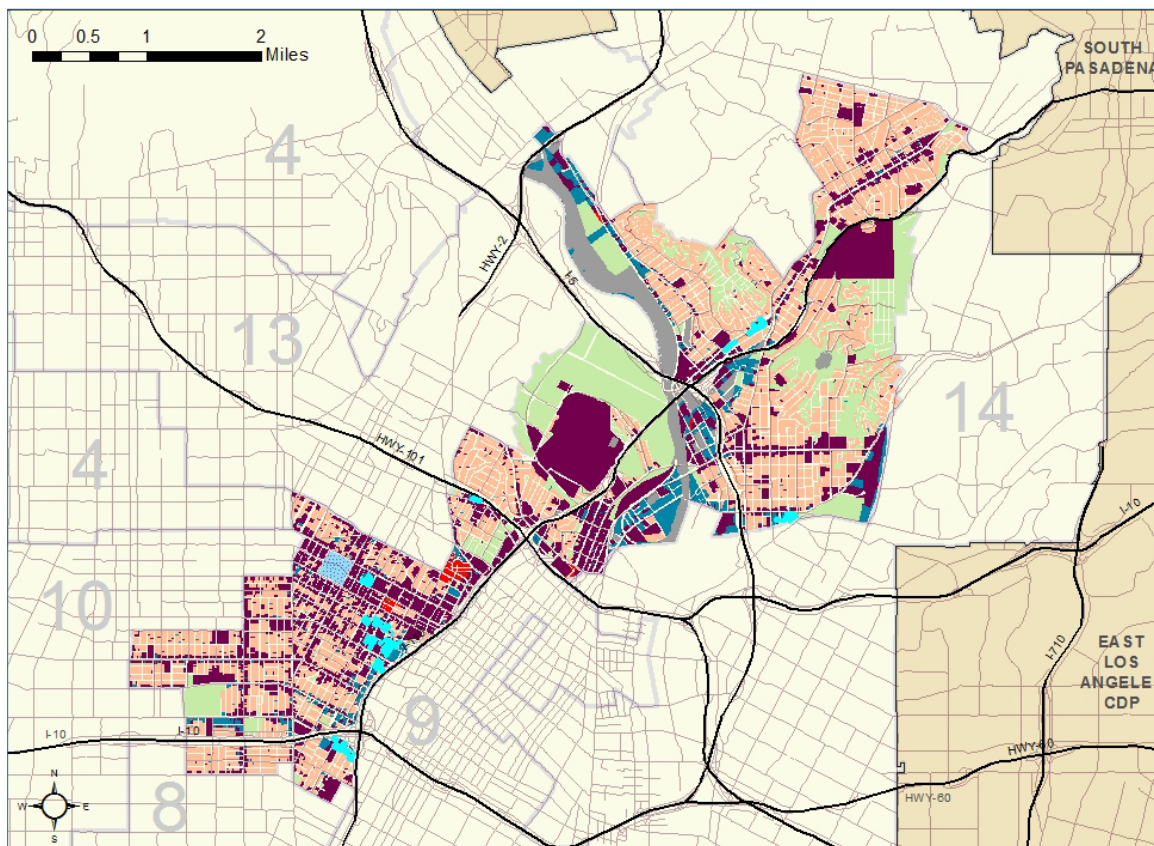
Exhibit A-8

Land Use in the City of Los Angeles



Sources: SCAG; ESRI; LAEDC



**Exhibit A-9****Land Use in Council District 1**

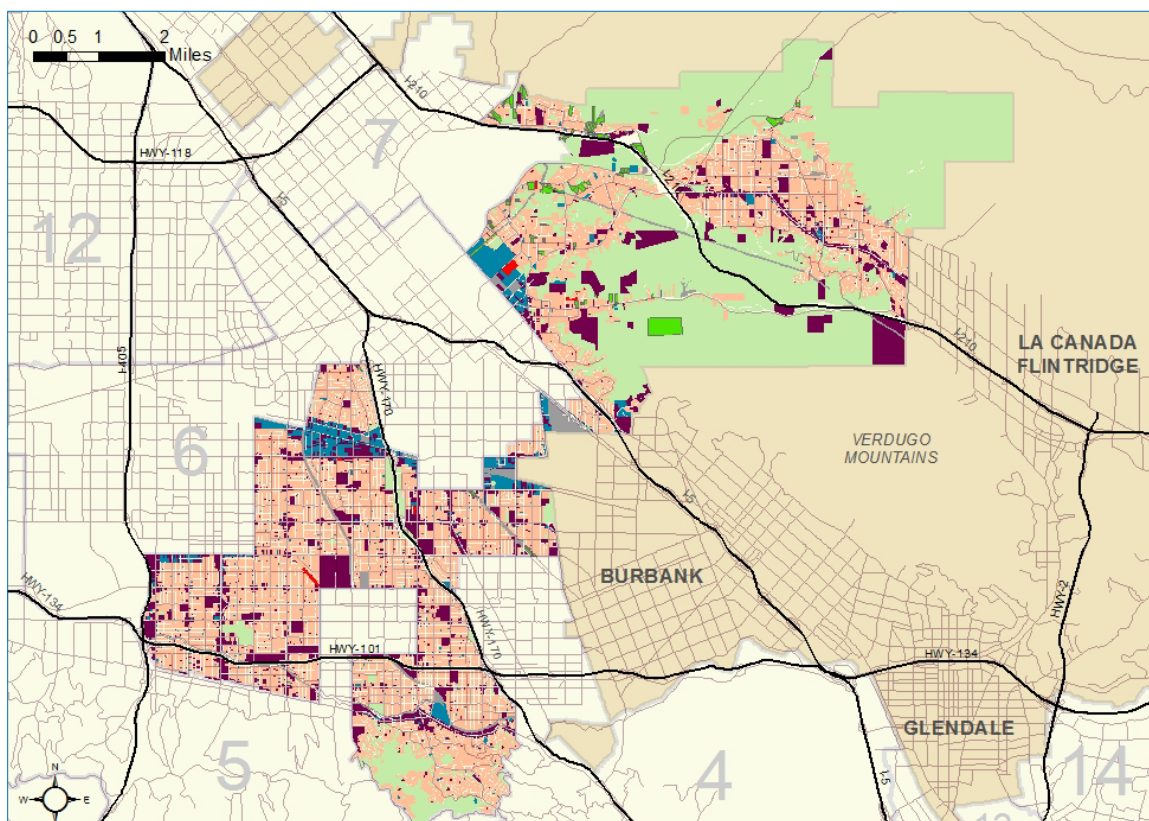
Sources: SCAG; ESRI; LAEDC

**Exhibit A-10****Land Use by Type in Council District 1**

	Acreage (000s)	% of Total
Residential	2.6	39.7%
Commercial	1.9	27.7%
Industrial	0.4	5.4%
Transportation, Communication, Utilities	0.4	6.4%
Open Space and Recreation	0.6	8.8%
Agriculture	0.0	0.0%
Other Land Uses	0.1	1.3%
Vacant	0.0	10.2%
Water	0.0	0.5%
<b>Total Zoned Land Area</b>	<b>6.7</b>	<b>99.9%</b>
<b>Total Land Area</b>	<b>6.7</b>	<b>100.0%</b>

Sources: SCAG; ESRI; LAEDC



**Exhibit A-11****Land Use in Council District 2**

Sources: SCAG; ESRI; LAEDC

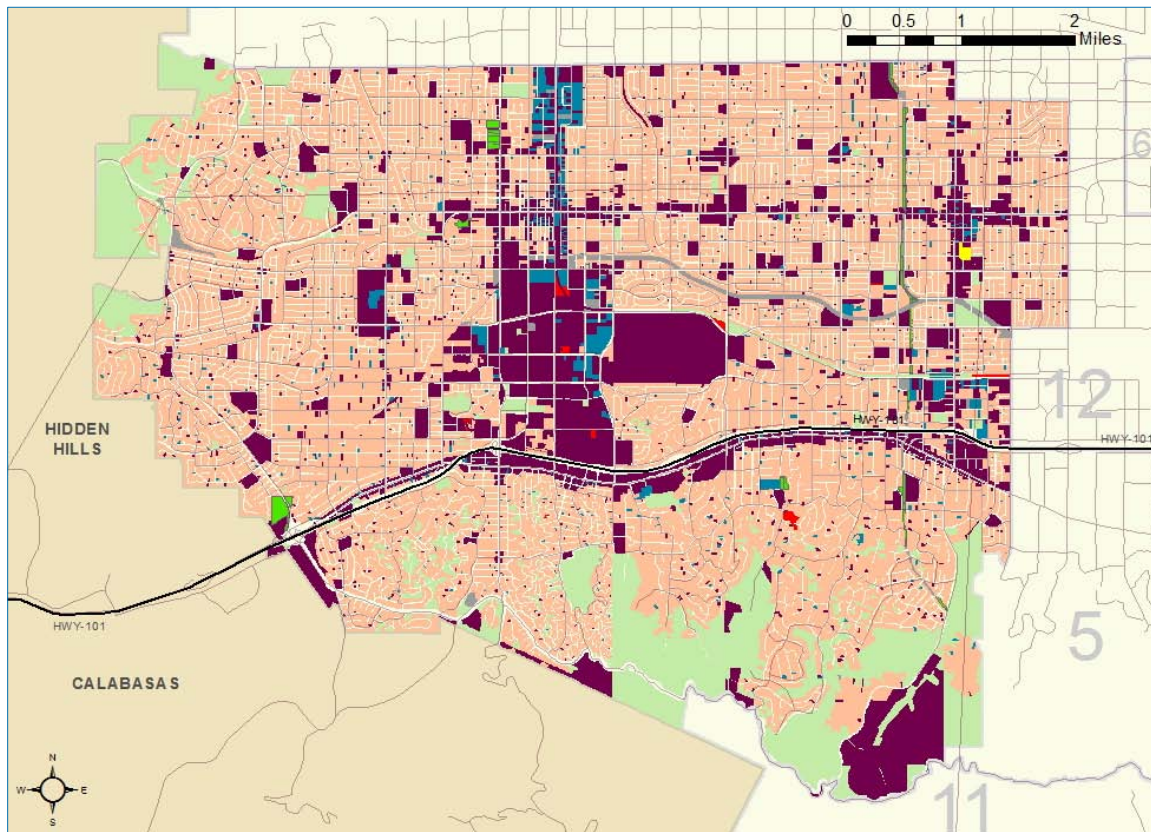
**Exhibit A-12****Land Use by Type in Council District 2**

	Acreage (000s)	% of Total
Residential	10.7	39.6%
Commercial	3.1	11.3%
Industrial	0.9	3.5%
Transportation, Communication, Utilities	0.6	2.4%
Open Space and Recreation	0.5	2.0%
Agriculture	0.3	1.2%
Other Land Uses	0.0	0.2%
Vacant	10.8	39.7%
Water	0.0	0.0%
<b>Total Zoned Land Area</b>	<b>27.0</b>	<b>99.8%</b>
<b>Total Land Area</b>	<b>27.1</b>	<b>100.0%</b>

Sources: SCAG; ESRI; LAEDC

**Exhibit A-13**

**Land Use in Council District 3**



Sources: SCAG; ESRI; LAEDC

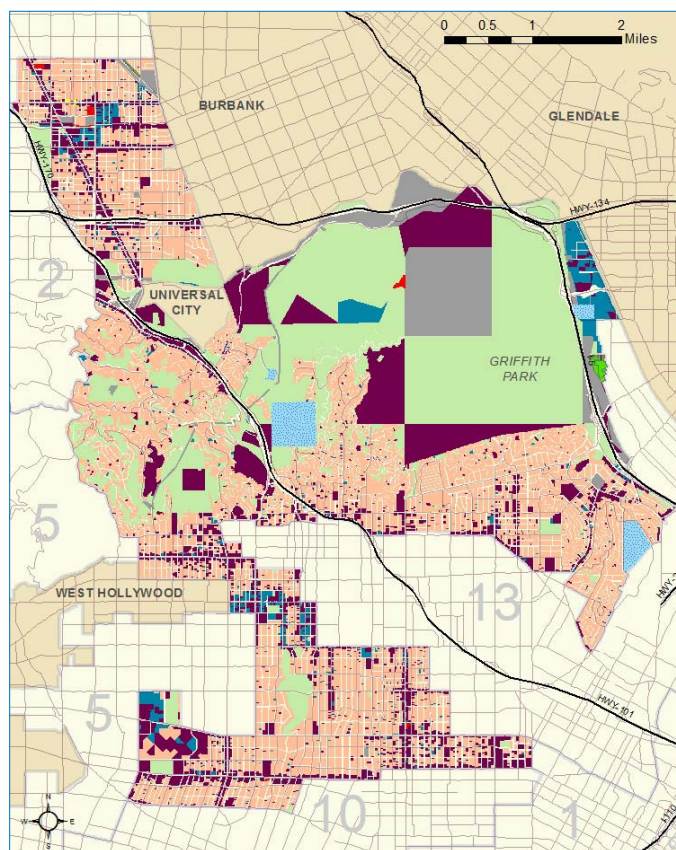
**Exhibit A-14**

**Land Use by Type in Council District 3**

	Acreage (000s)	% of Total
Residential	13.4	62.9%
Commercial	4.3	20.0%
Industrial	0.5	2.2%
Transportation, Communication, Utilities	0.2	1.0%
Open Space and Recreation	0.7	3.3%
Agriculture	0.1	0.4%
Other Land Uses	0.0	0.2%
Vacant	2.1	9.8%
Water	0.0	0.0%
<b>Total Zoned Land Area</b>	<b>21.2</b>	<b>99.8%</b>
<b>Total Land Area</b>	<b>21.3</b>	<b>100.0%</b>

Sources: SCAG; ESRI; LAEDC

**Exhibit A-15**  
Land Use in Council District 4



Sources: SCAG; ESRI; LAEDC

**Exhibit A-16**  
Land Use by Type in Council District 4

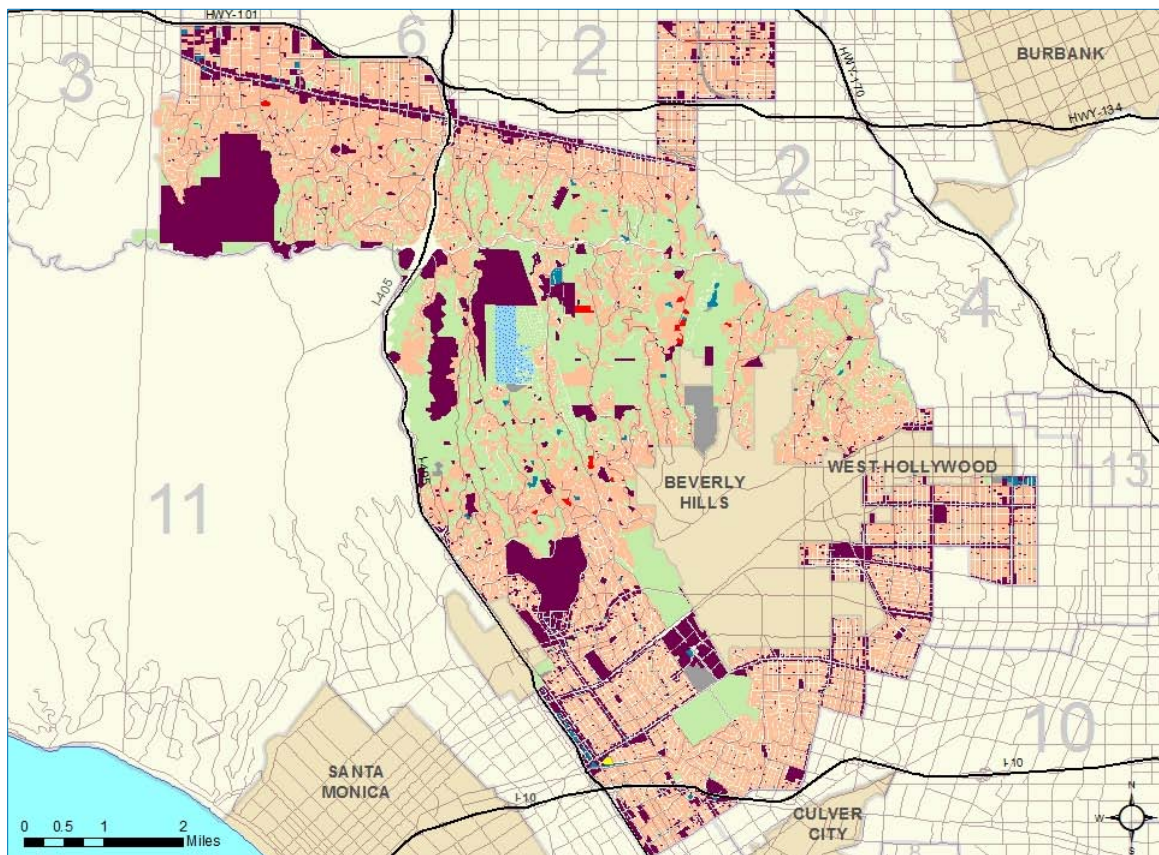
	Acreage (000s)	% of Total
Residential	6.5	39.7%
Commercial	2.8	17.4%
Industrial	0.5	3.3%
Transportation, Communication, Utilities	1.1	7.0%
Open Space and Recreation	1.6	9.9%
Agriculture	0.0	0.2%
Other Land Uses	0.0	0.2%
Vacant	3.4	20.5%
Water	0.3	1.6%
<b>Total Zoned Land Area</b>	<b>16.3</b>	<b>99.7%</b>
<b>Total Land Area</b>	<b>16.4</b>	<b>100.0%</b>

Sources: SCAG; ESRI; LAEDC



**Exhibit A-17**

**Land Use in Council District 5**



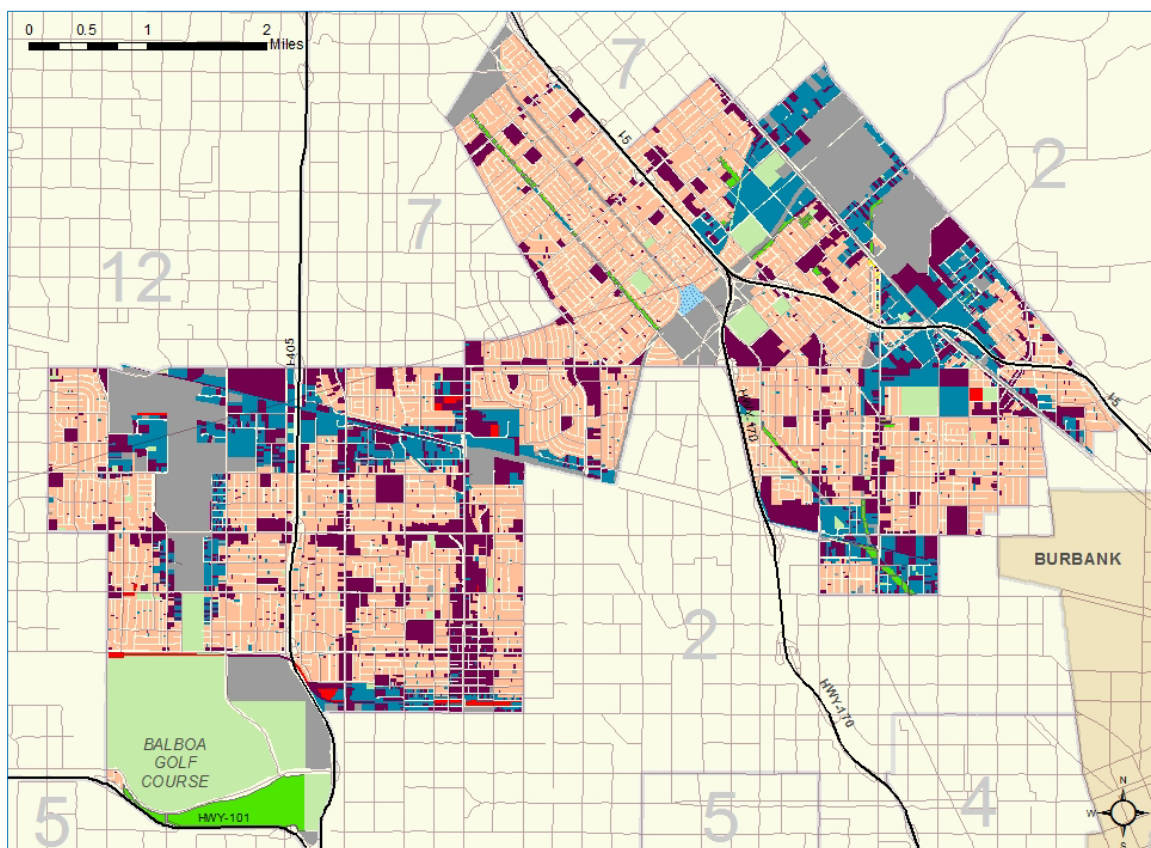
Sources: SCAG; ESRI; LAEDC

**Exhibit A-18**

**Land Use by Type in Council District 5**

	Acreage (000s)	% of Total
Residential	13.6	54.1%
Commercial	4.5	17.7%
Industrial	0.2	1.0%
Transportation, Communication, Utilities	0.3	1.2%
Open Space and Recreation	1.0	3.8%
Agriculture	0.1	0.0%
Other Land Uses	0.1	0.3%
Vacant	5.3	20.9%
Water	0.2	0.8%
<b>Total Zoned Land Area</b>	<b>25.1</b>	<b>99.8%</b>
<b>Total Land Area</b>	<b>25.2</b>	<b>100.0%</b>

Sources: SCAG; ESRI; LAEDC

**Exhibit A-19****Land Use in Council District 6**

Sources: SCAG; ESRI; LAEDC

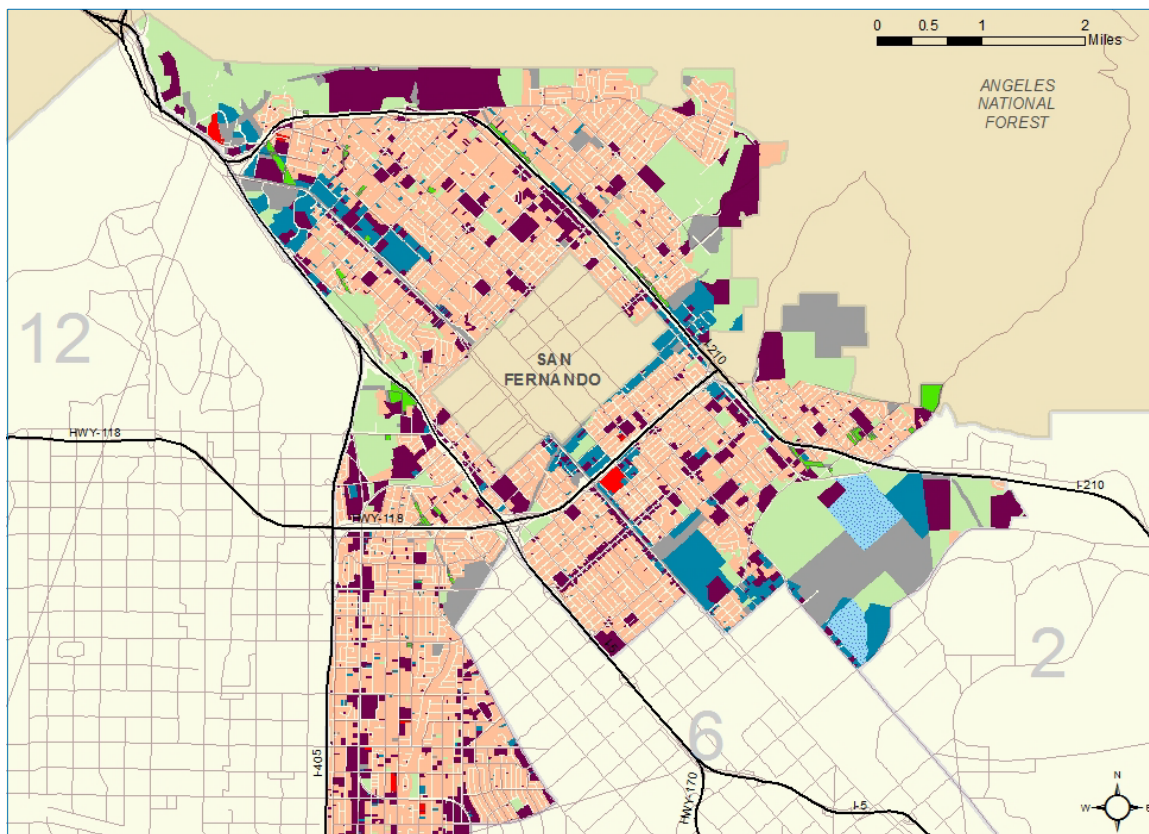
**Exhibit A-20****Land Use by Type in Council District 6**

	Acreage (000s)	% of Total
Residential	5.8	43.0%
Commercial	2.4	17.8%
Industrial	1.7	12.3%
Transportation, Communication, Utilities	1.9	13.8%
Open Space and Recreation	1.2	8.7%
Agriculture	0.3	2.2%
Other Land Uses	0.1	0.5%
Vacant	0.2	1.3%
Water	0.0	0.2%
<b>Total Zoned Land Area</b>	<b>13.5</b>	<b>99.8%</b>
<b>Total Land Area</b>	<b>13.6</b>	<b>100.0%</b>

Sources: SCAG; ESRI; LAEDC

**Exhibit A-21**

**Land Use in Council District 7**



Sources: SCAG; ESRI; LAEDC

**Exhibit A-22**

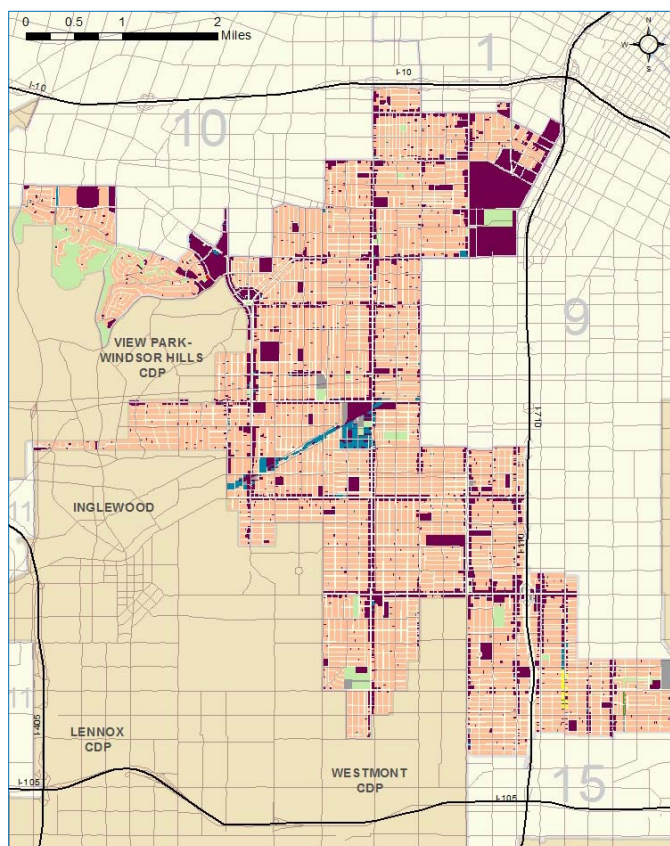
**Land Use by Type in Council District 7**

	Acreage (000s)	% of Total
Residential	7.0	47.1%
Commercial	2.6	17.2%
Industrial	1.1	7.2%
Transportation, Communication, Utilities	1.3	8.5%
Open Space and Recreation	1.1	7.6%
Agriculture	0.1	0.9%
Other Land Uses	0.1	0.4%
Vacant	1.3	9.0%
Water	0.3	1.9%
<b>Total Zoned Land Area</b>	<b>14.8</b>	<b>99.7%</b>
<b>Total Land Area</b>	<b>14.9</b>	<b>100.0%</b>

Sources: SCAG; ESRI; LAEDC



**Exhibit A-23**  
Land Use in Council District 8



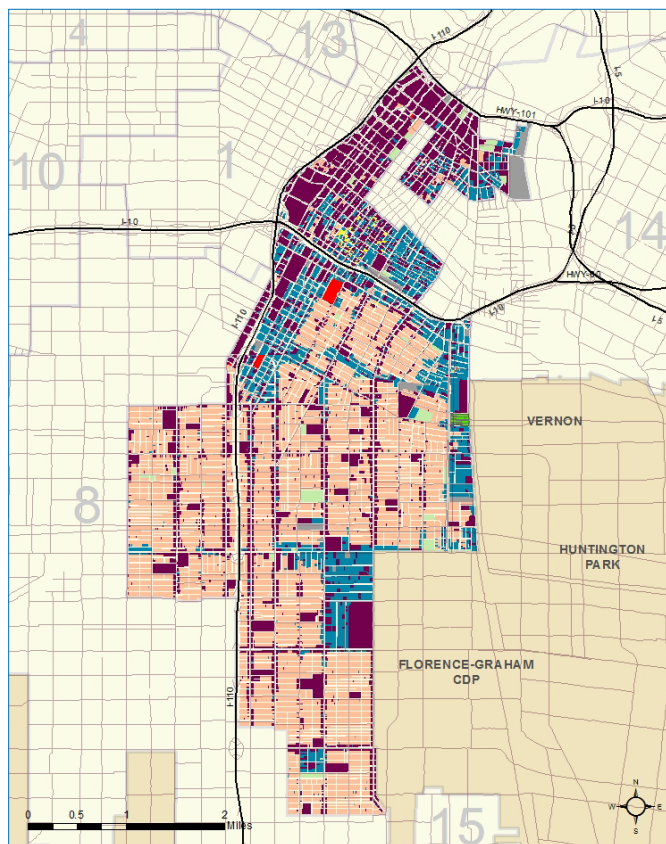
Sources: SCAG; ESRI; LAEDC

**Exhibit A-24**  
Land Use by Type in Council District 8

	Acreage (000s)	% of Total
Residential	6.0	74.1%
Commercial	1.5	18.7%
Industrial	0.1	1.4%
Transportation, Communication, Utilities	0.1	0.9%
Open Space and Recreation	0.3	3.1%
Agriculture	0.0	0.0%
Other Land Uses	0.7	0.7%
Vacant	0.1	1.0%
Water	0.0	0.0%
<b>Total Zoned Land Area</b>	<b>8.1</b>	<b>99.9%</b>
<b>Total Land Area</b>	<b>8.1</b>	<b>100.0%</b>

Sources: SCAG; ESRI; LAEDC

**Exhibit A-25**  
Land Use in Council District 9

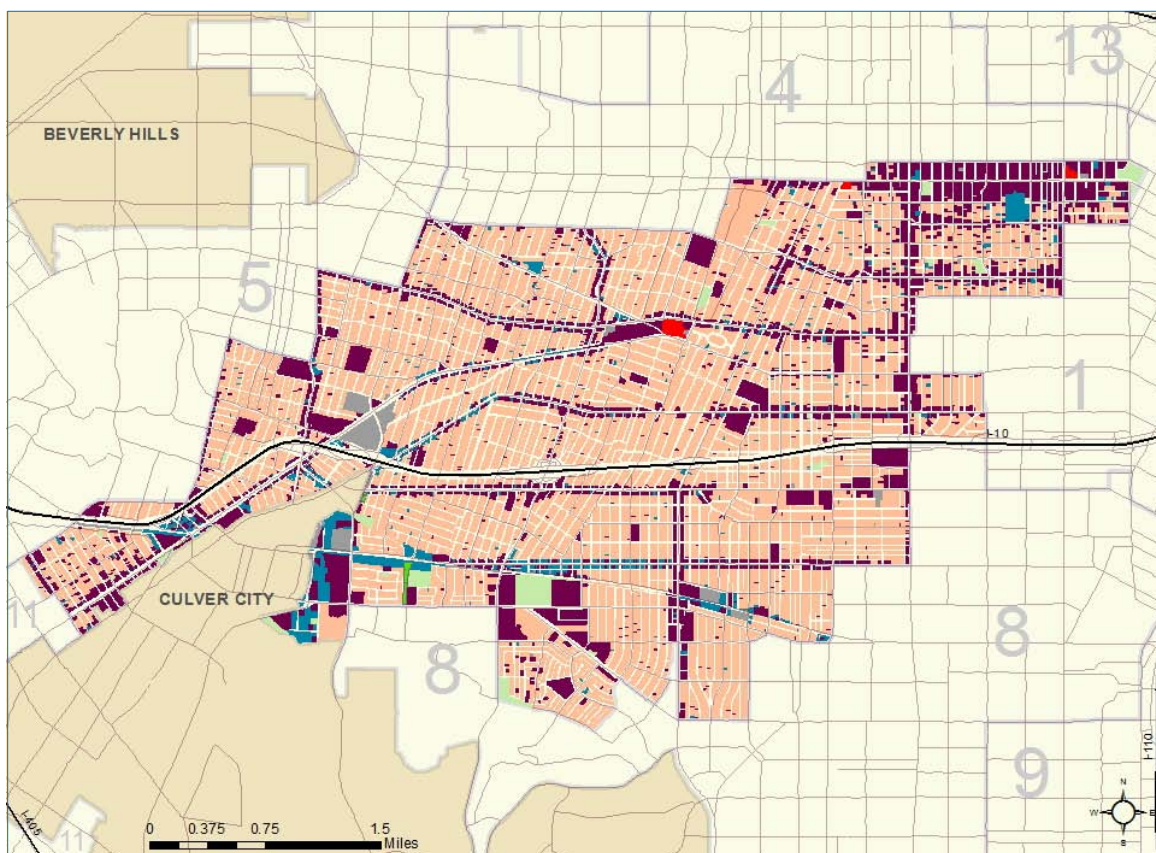


Sources: SCAG; ESRI; LAEDC

**Exhibit A-26**  
Land Use by Type in Council District 9

	Acreage (000s)	% of Total
Residential	3.2	48.4%
Commercial	2.0	29.9%
Industrial	1.1	16.0%
Transportation, Communication, Utilities	0.2	2.3%
Open Space and Recreation	0.1	1.2%
Agriculture	0.0	0.2%
Other Land Uses	0.1	1.6%
Vacant	0.0	0.3%
Water	0.0	0.0%
<b>Total Zoned Land Area</b>	<b>6.7</b>	<b>99.8%</b>
<b>Total Land Area</b>	<b>6.7</b>	<b>100.0%</b>

Sources: SCAG; ESRI; LAEDC

**Exhibit A-27****Land Use in Council District 10**

Sources: SCAG; ESRI; LAEDC

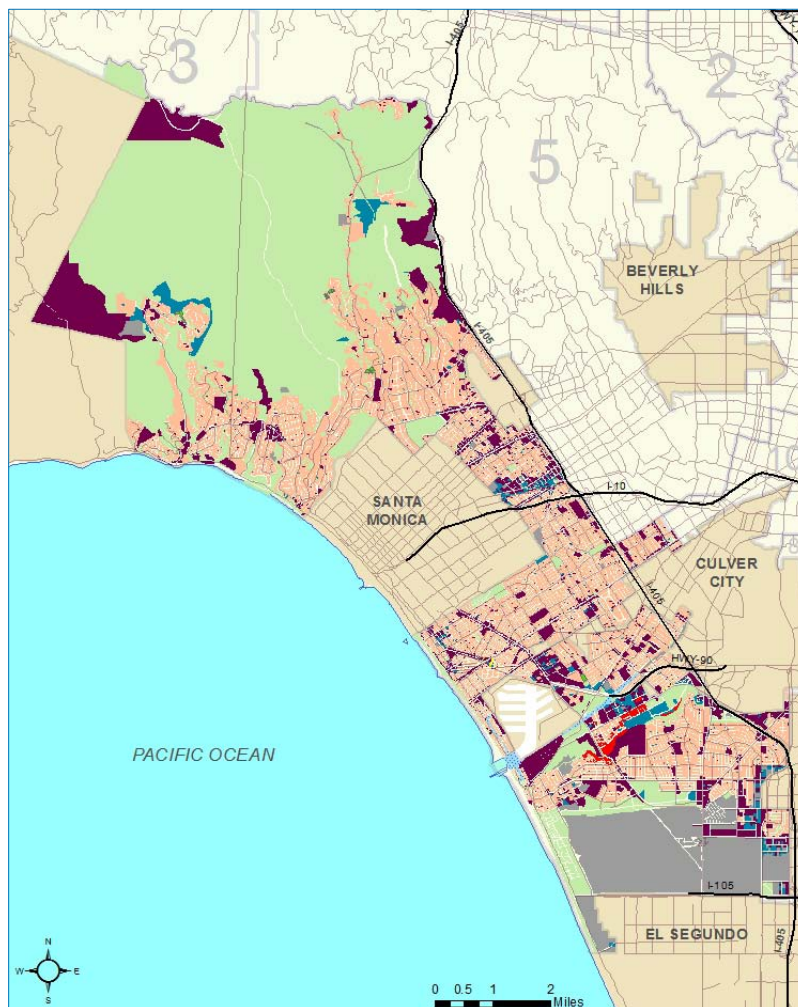
**Exhibit A-28****Land Use by Type in Council District 10**

	Acreage (000s)	% of Total
Residential	4.2	69.8%
Commercial	1.4	22.7%
Industrial	0.2	3.9%
Transportation, Communication, Utilities	0.1	1.6%
Open Space and Recreation	0.1	1.4%
Agriculture	0.0	0.1%
Other Land Uses	0.0	0.3%
Vacant	0.0	0.1%
Water	0.0	0.0%
<b>Total Zoned Land Area</b>	<b>6.0</b>	<b>99.8%</b>
<b>Total Land Area</b>	<b>6.0</b>	<b>100.0%</b>

Sources: SCAG; ESRI; LAEDC



**Exhibit A-29**  
Land Use in Council District 11

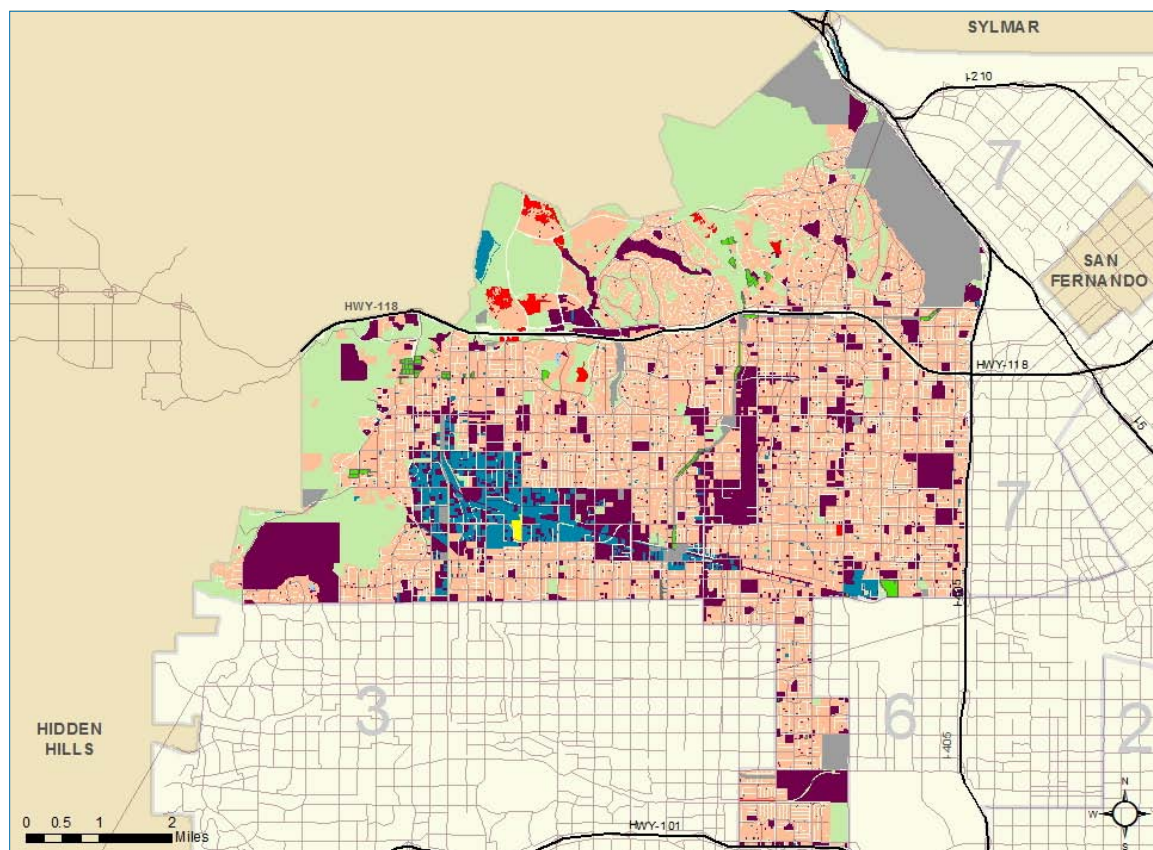


Sources: SCAG; ESRI; LAEDC

**Exhibit A-30**  
Land Use by Type in Council District 11

	Acreage (000s)	% of Total
Residential	10.1	28.4%
Commercial	4.3	12.1%
Industrial	8.1	2.3%
Transportation, Communication, Utilities	3.4	9.6%
Open Space and Recreation	1.4	3.9%
Agriculture	1.2	3.1%
Other Land Uses	0.1	0.4%
Vacant	13.5	37.8%
Water	0.1	0.4%
<b>Total Zoned Land Area</b>	<b>33.8</b>	<b>94.9%</b>
<b>Total Land Area</b>	<b>35.6</b>	<b>100.0%</b>

Sources: SCAG; ESRI; LAEDC

**Exhibit A-31****Land Use in Council District 12**

Sources: SCAG; ESRI; LAEDC

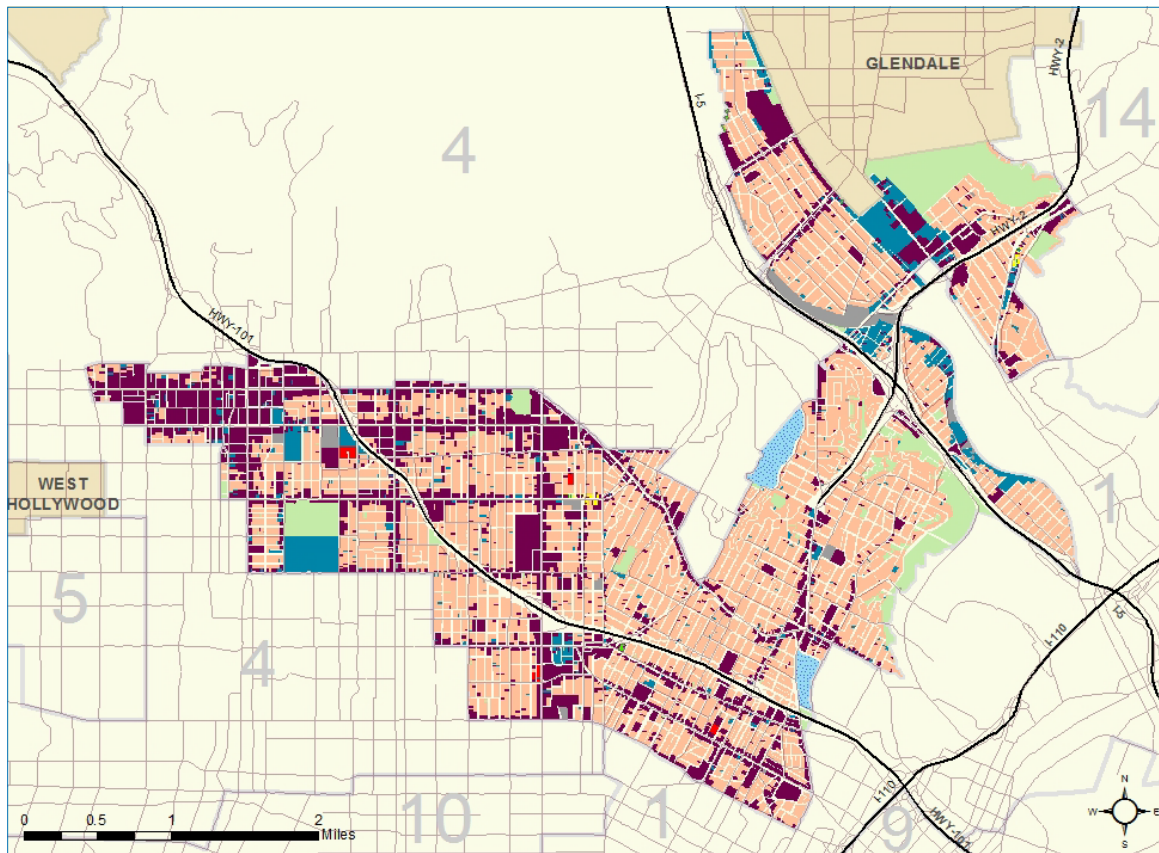
**Exhibit A-32****Land Use by Type in Council District 12**

	Acreage (000s)	% of Total
Residential	14.9	49.7%
Commercial	4.9	16.3%
Industrial	1.3	4.5%
Transportation, Communication, Utilities	2.4	8.1%
Open Space and Recreation	0.8	2.6%
Agriculture	0.2	0.7%
Other Land Uses	0.2	0.8%
Vacant	5.2	17.2%
Water	0.0	0.0%
<b>Total Zoned Land Area</b>	<b>29.9</b>	<b>99.9%</b>
<b>Total Land Area</b>	<b>29.9</b>	<b>100.0%</b>

Sources: SCAG; ESRI; LAEDC

**Exhibit A-33**

**Land Use in Council District 13**



Sources: SCAG; ESRI; LAEDC

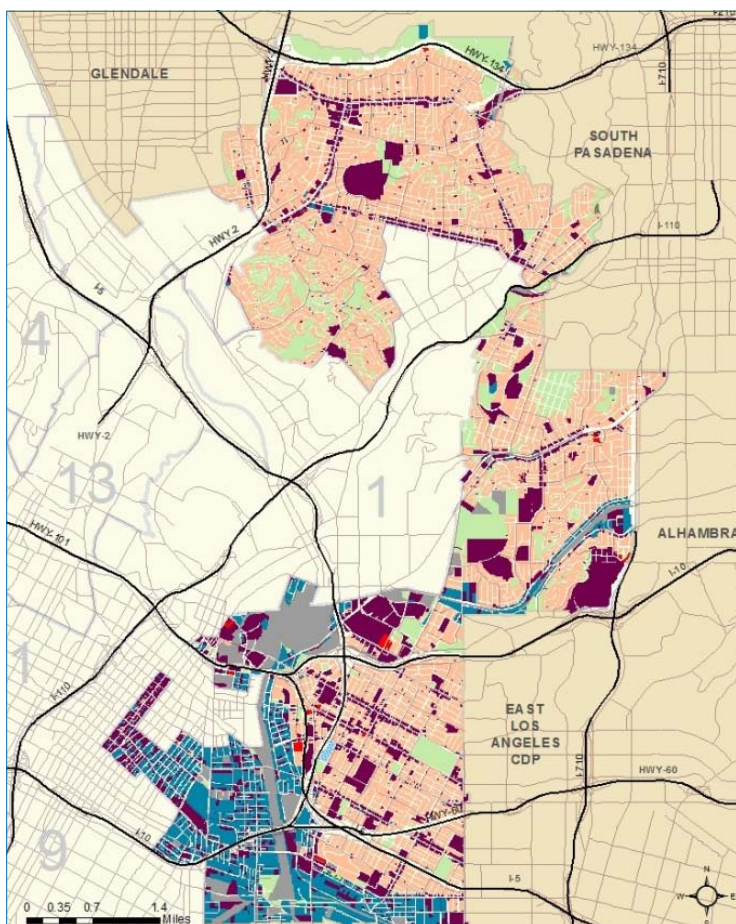
**Exhibit A-34**

**Land Use by Type in Council District 13**

	Acreage (000s)	% of Total
Residential	3.3	57.1%
Commercial	1.4	24.9%
Industrial	0.4	6.1%
Transportation, Communication, Utilities	0.1	1.8%
Open Space and Recreation	0.4	7.0%
Agriculture	0.0	0.0%
Other Land Uses	29.1	0.5%
Vacant	0.1	1.2%
Water	0.0	0.0%
<b>Total Zoned Land Area</b>	<b>5.7</b>	<b>99.8%</b>
<b>Total Land Area</b>	<b>5.7</b>	<b>100.0%</b>

Sources: SCAG; ESRI; LAEDC



**Exhibit A-35****Land Use in Council District 14**

Sources: SCAG; ESRI; LAEDC

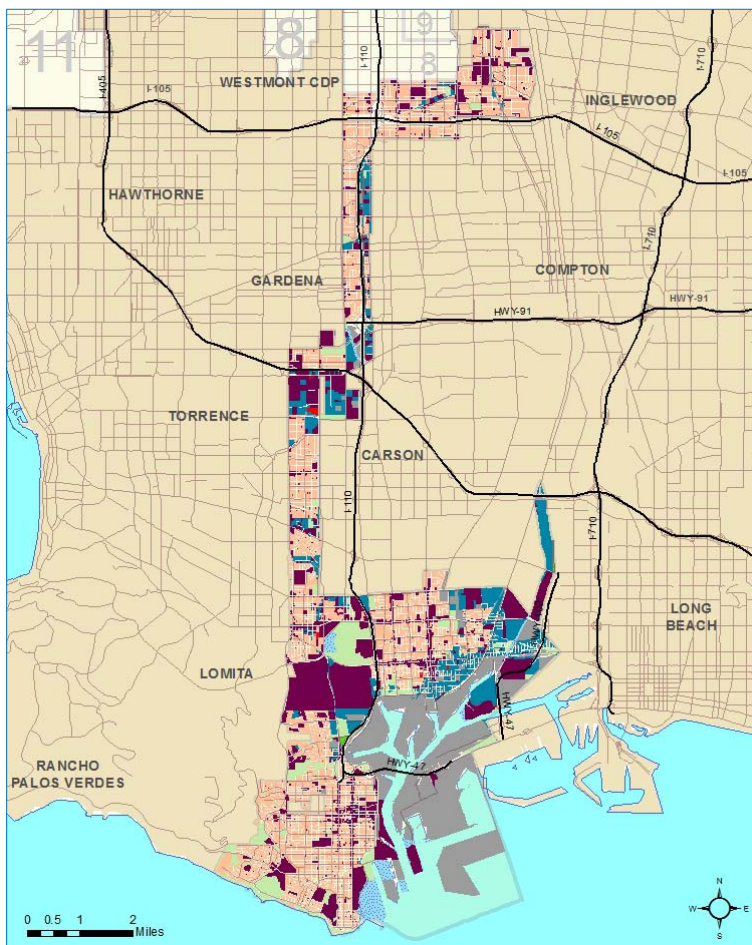
**Exhibit A-36****Land Use by Type in Council District 14**

	Acreage (000s)	% of Total
Residential	5.5	49.3%
Commercial	2.1	18.7%
Industrial	1.3	11.5%
Transportation, Communication, Utilities	0.8	7.4%
Open Space and Recreation	0.3	2.5%
Agriculture	0.0	0.0%
Other Land Uses	0.1	0.5%
Vacant	1.1	10.0%
Water	0.0	0.0%
<b>Total Zoned Land Area</b>	<b>11.1</b>	<b>99.9%</b>
<b>Total Land Area</b>	<b>11.1</b>	<b>100.0%</b>

Sources: SCAG; ESRI; LAEDC

**Exhibit A-37**

**Land Use in Council District 15**



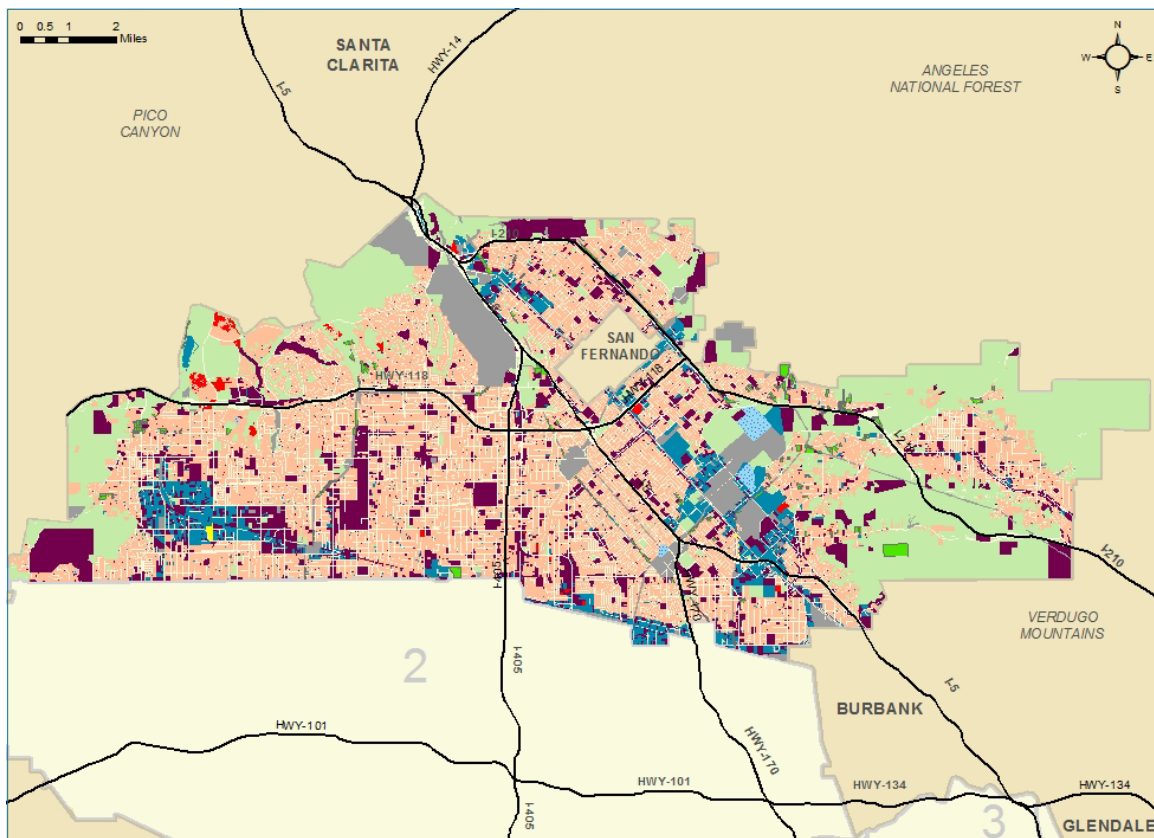
Sources: SCAG; ESRI; LAEDC

**Exhibit A-38**

**Land Use by Type in Council District 15**

	Acreage (000s)	% of Total
Residential	5.9	34.6%
Commercial	3.9	23.0%
Industrial	1.8	10.2%
Transportation, Communication, Utilities	3.8	21.9%
Open Space and Recreation	0.7	4.3%
Agriculture	0.1	0.4%
Other Land Uses	0.1	0.3%
Vacant	0.5	2.9%
Water	0.4	2.3%
<b>Total Zoned Land Area</b>	<b>17.2</b>	<b>99.8%</b>
<b>Total Land Area</b>	<b>17.2</b>	<b>100.0%</b>

Sources: SCAG; ESRI; LAEDC

**Exhibit A-39****Land Use in the North Valley Planning Area**

Sources: SCAG; ESRI; LAEDC

**Exhibit A-40****Land Use by Type in the North Valley Planning Area**

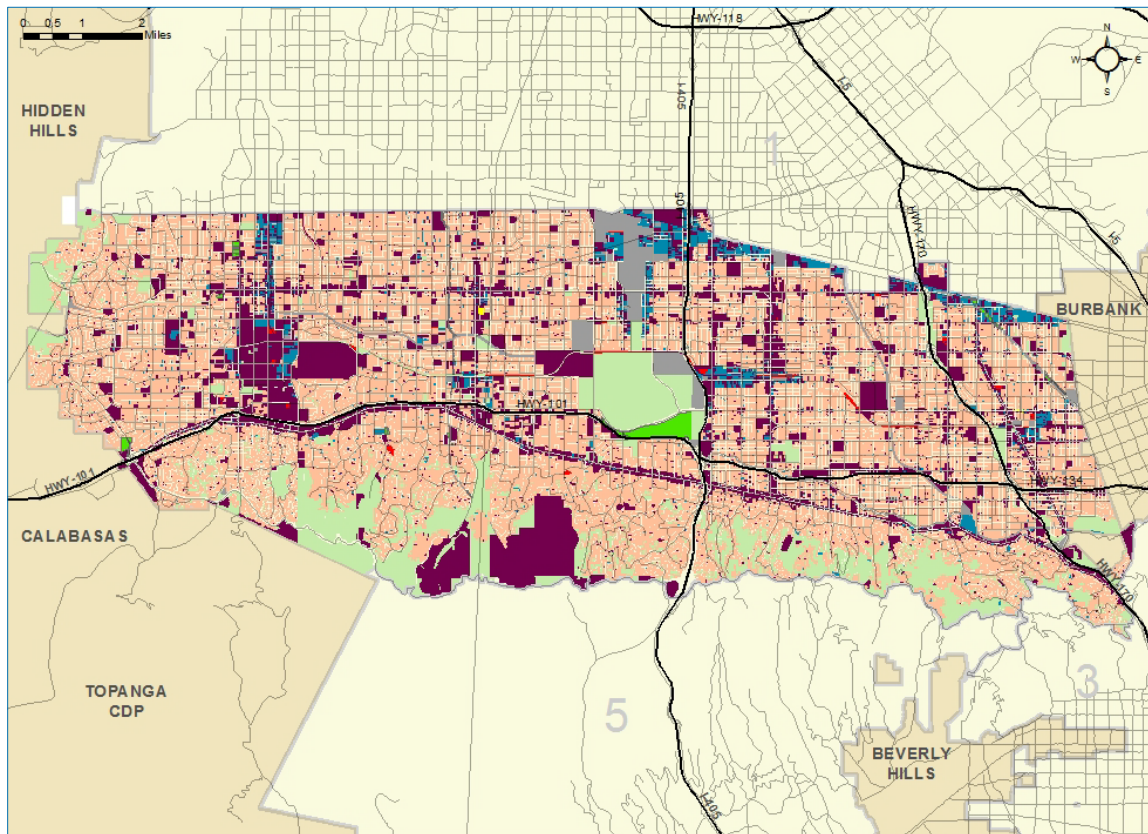
	Acreage (000s)	% of Total
Residential	29.0	42.6%
Commercial	9.7	14.2%
Industrial	4.0	5.9%
Transportation, Communication, Utilities	4.9	7.3%
Open Space and Recreation	2.2	3.2%
Agriculture	0.7	1.1%
Other Land Uses	0.3	0.5%
Vacant	16.8	24.6%
Water	0.3	0.5%
<b>Total Zoned Land Area</b>	<b>68.0</b>	<b>99.8%</b>
<b>Total Land Area</b>	<b>68.1</b>	<b>100.0%</b>

Sources: SCAG; ESRI; LAEDC



**Exhibit A-41**

**Land Use in the South Valley Planning Area**



Sources: SCAG; ESRI; LAEDC

**Exhibit A-42**

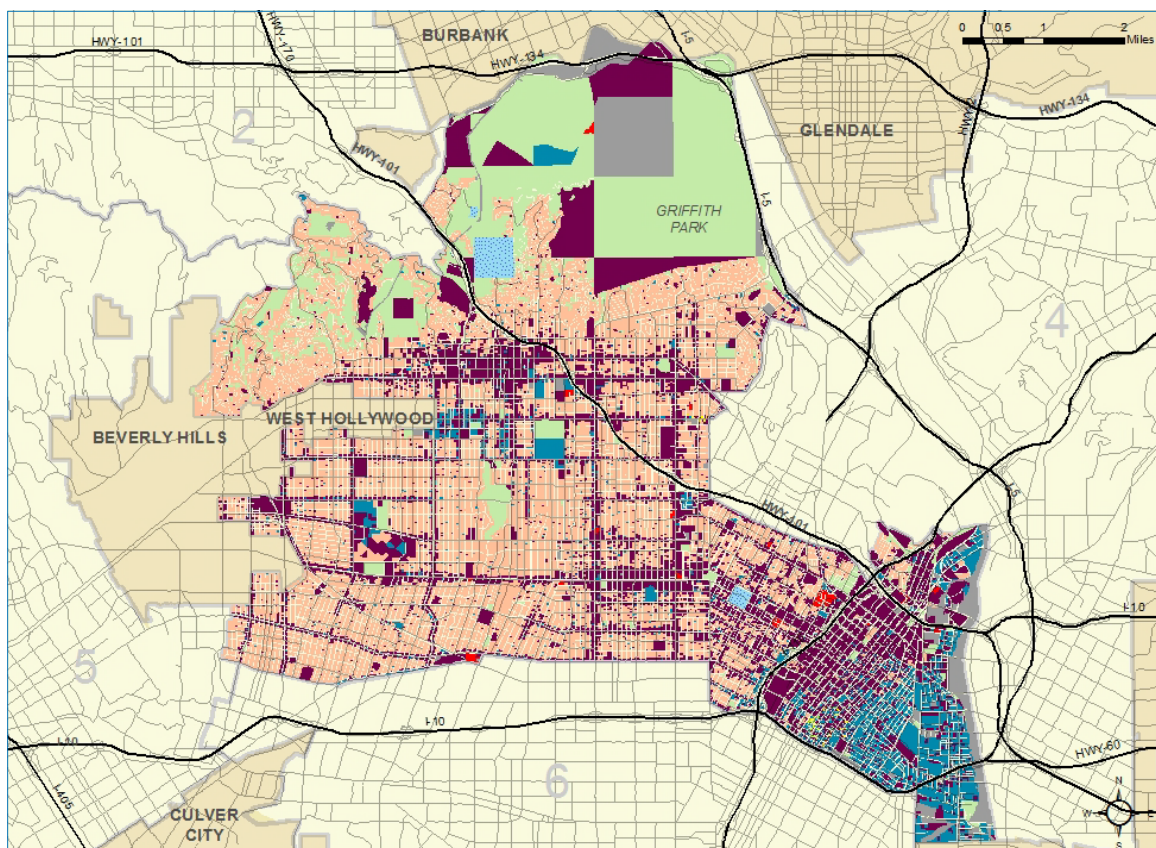
**Land Use by Type in the South Valley Planning Area**

	Acreage (000s)	% of Total
Residential	29.6	59.4%
Commercial	9.7	19.6%
Industrial	1.6	3.3%
Transportation, Communication, Utilities	1.6	3.2%
Open Space and Recreation	2.4	4.7%
Agriculture	0.3	0.7%
Other Land Uses	0.1	0.3%
Vacant	4.3	8.6%
Water	0.0	0.0%
<b>Total Zoned Land Area</b>	<b>49.7</b>	<b>99.8%</b>
<b>Total Land Area</b>	<b>49.8</b>	<b>100.0%</b>

Sources: SCAG; ESRI; LAEDC

## Exhibit A-43

## Land Use in the Central Los Angeles Planning Area



Sources: SCAG; ESRI; LAEDC

## Exhibit A-44

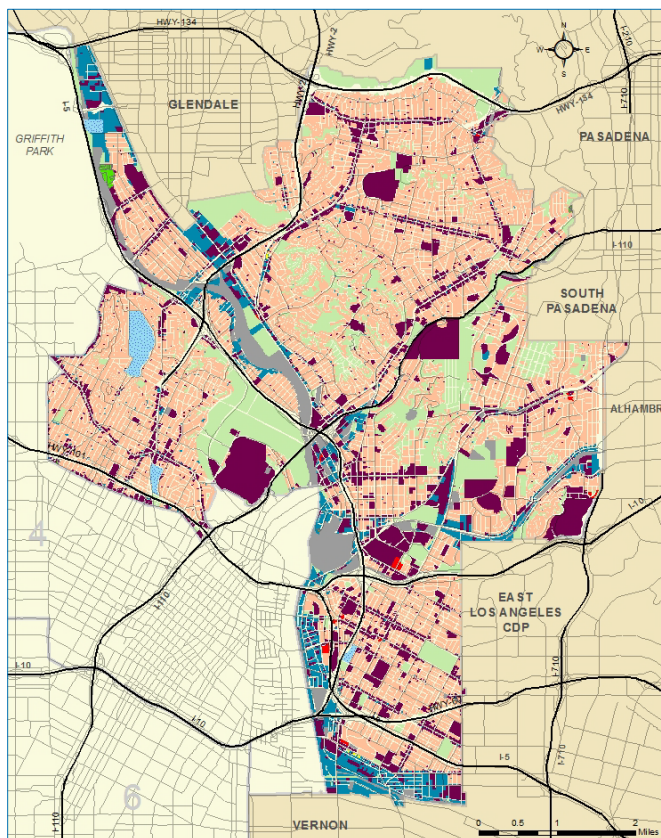
### Land Use by Type in the Central Los Angeles Planning Area

	Acreage (000s)	% of Total
Residential	10.0	40.5%
Commercial	6.2	25.2%
Industrial	1.6	6.4%
Transportation, Communication, Utilities	1.5	6.0%
Open Space and Recreation	1.5	6.1%
Agriculture	0.0	0.0%
Other Land Uses	0.1	0.5%
Vacant	3.5	14.3%
Water	0.2	0.8%
<b>Total Zoned Land Area</b>	<b>24.6</b>	<b>99.7%</b>
<b>Total Land Area</b>	<b>24.6</b>	<b>100.0%</b>

Sources: SCAG; ESRI; LAEDC

**Exhibit A-45**

**Land Use in the East Los Angeles Planning Area**



Sources: SCAG; ESRI; LAEDC

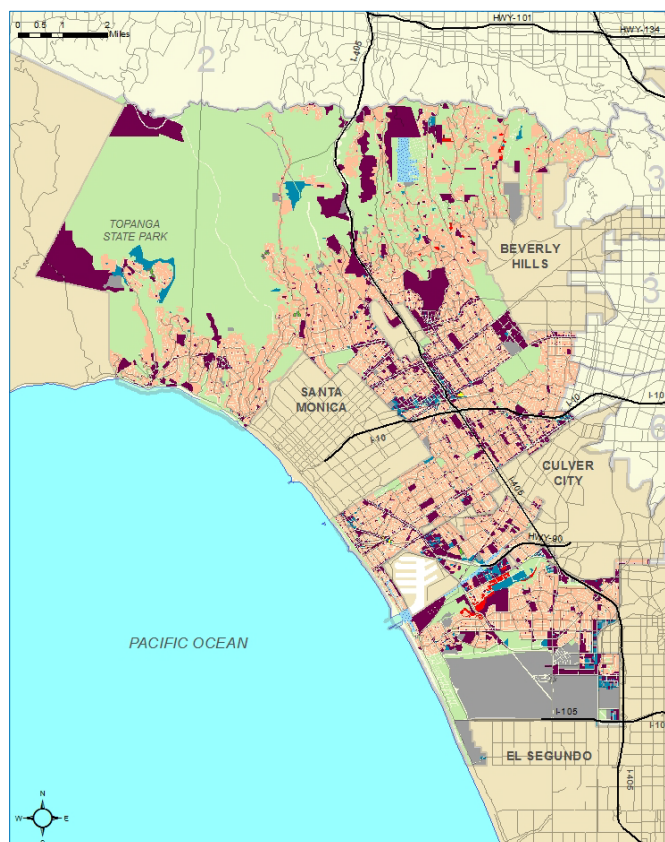
**Exhibit A-46**

**Land Use by Type in the East Los Angeles Planning Area**

	Acreage (000s)	% of Total
Residential	9.6	52.7%
Commercial	3.2	17.5%
Industrial	1.2	6.6%
Transportation, Communication, Utilities	1.0	5.6%
Open Space and Recreation	1.2	6.4%
Agriculture	0.0	0.2%
Other Land Uses	0.1	0.4%
Vacant	1.8	9.8%
Water	0.2	1.0%
<b>Total Zoned Land Area</b>	<b>18.2</b>	<b>99.9%</b>
<b>Total Land Area</b>	<b>18.2</b>	<b>100.0%</b>

Sources: SCAG; ESRI; LAEDC



**Exhibit A-47****Land Use in the West Los Angeles Planning Area**

Sources: SCAG; ESRI; LAEDC

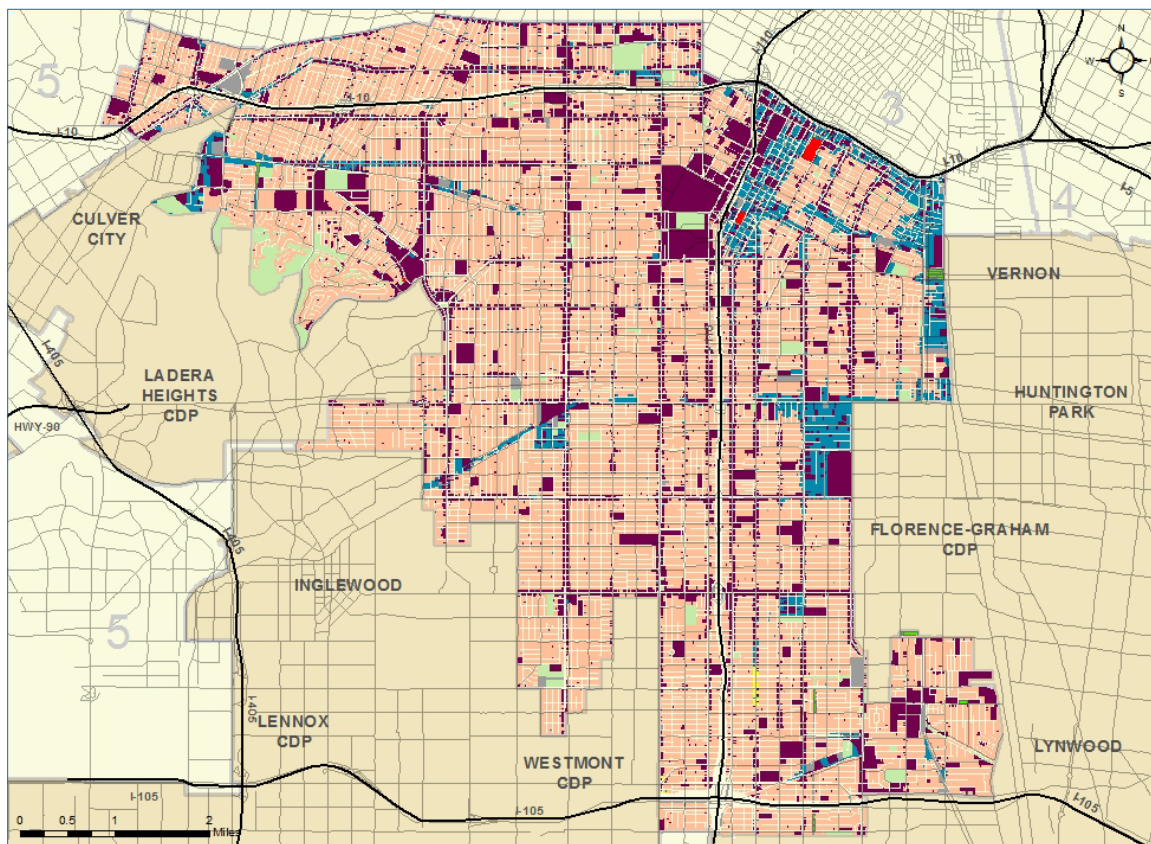
**Exhibit A-48****Land Use by Type in the West Los Angeles Planning Area**

	Acreage (000s)	% of Total
Residential	16.5	33.3%
Commercial	6.6	13.3%
Industrial	1.0	1.9%
Transportation, Communication, Utilities	3.7	7.4%
Open Space and Recreation	2.3	4.7%
Agriculture	0.0	0.1%
Other Land Uses	0.2	0.4%
Vacant	17.0	34.5%
Water	0.3	0.7%
<b>Total Zoned Land Area</b>	<b>47.5</b>	<b>96.3%</b>
<b>Total Land Area</b>	<b>49.4</b>	<b>100.0%</b>

Sources: SCAG; ESRI; LAEDC

**Exhibit A-49**

**Land Use in the South Los Angeles Planning Area**



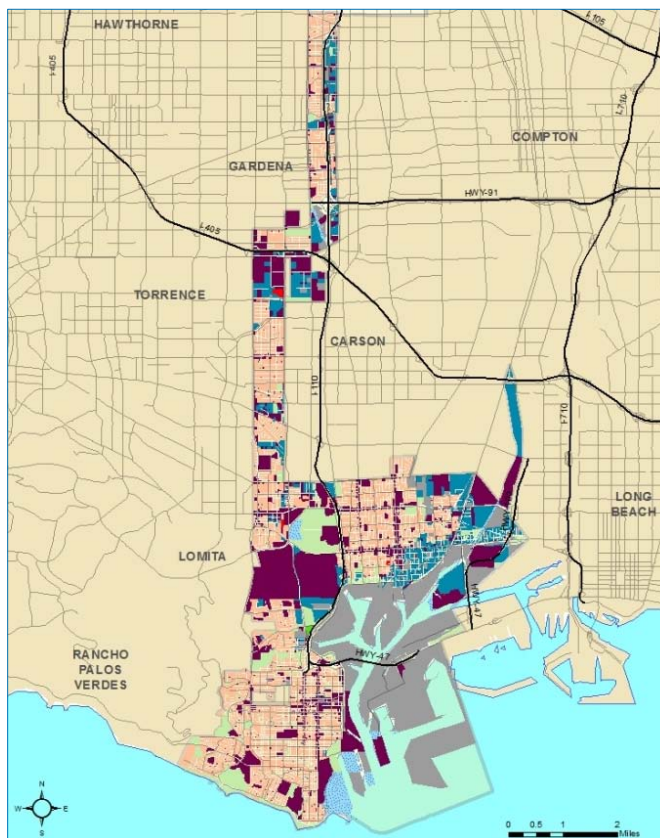
Sources: SCAG; ESRI; LAEDC

**Exhibit A-50**

**Land Use by Type in the South Los Angeles Planning Area**

	Acreage (000s)	% of Total
Residential	13.6	68.2%
Commercial	4.1	20.4%
Industrial	1.2	5.8%
Transportation, Communication, Utilities	0.3	1.4%
Open Space and Recreation	0.5	2.4%
Agriculture	0.0	0.2%
Other Land Uses	0.2	0.8%
Vacant	0.1	0.7%
Water	0.0	0.0%
<b>Total Zoned Land Area</b>	<b>19.9</b>	<b>99.9%</b>
<b>Total Land Area</b>	<b>20.0</b>	<b>100.0%</b>

Sources: SCAG; ESRI; LAEDC

**Exhibit A-51****Land Use in the Harbor Planning Area**

Sources: SCAG; ESRI; LAEDC

**Exhibit A-52****Land Use by Type in the Harbor Planning Area**

	Acreage (000s)	% of Total
Residential	4.6	30.4%
Commercial	3.6	23.3%
Industrial	1.7	11.1%
Transportation, Communication, Utilities	3.7	24.3%
Open Space and Recreation	0.7	4.6%
Agriculture	0.0	0.3%
Other Land Uses	0.0	0.2%
Vacant	0.5	3.1%
Water	0.4	2.6%
<b>Total Zoned Land Area</b>	<b>15.2</b>	<b>99.8%</b>
<b>Total Land Area</b>	<b>15.3</b>	<b>100.0%</b>

Sources: SCAG; ESRI; LAEDC



Los Angeles County Economic Development Corporation  
444 S. Flower Street, 37<sup>th</sup> Floor  
Los Angeles, CA 90071  
[www.LAEDC.org](http://www.LAEDC.org)

