



***Welcome to
Los Angeles AFB***

***South Bay Association of
Chambers of Commerce***



Agenda

- Who we are...
- What we do...
- Community Impact
- Questions / Roof-top Tour





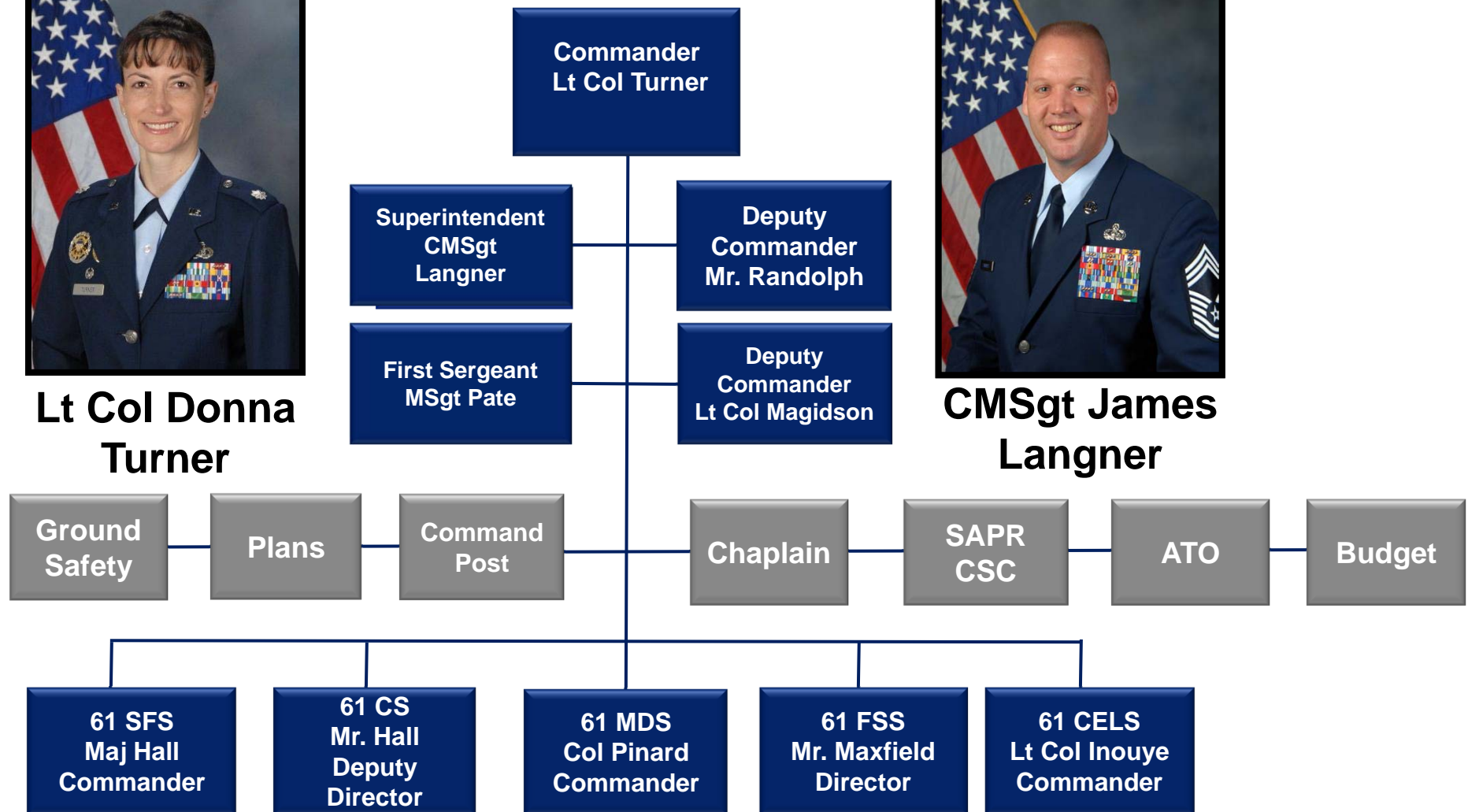
61st Air Base Group



**Lt Col Donna
Turner**

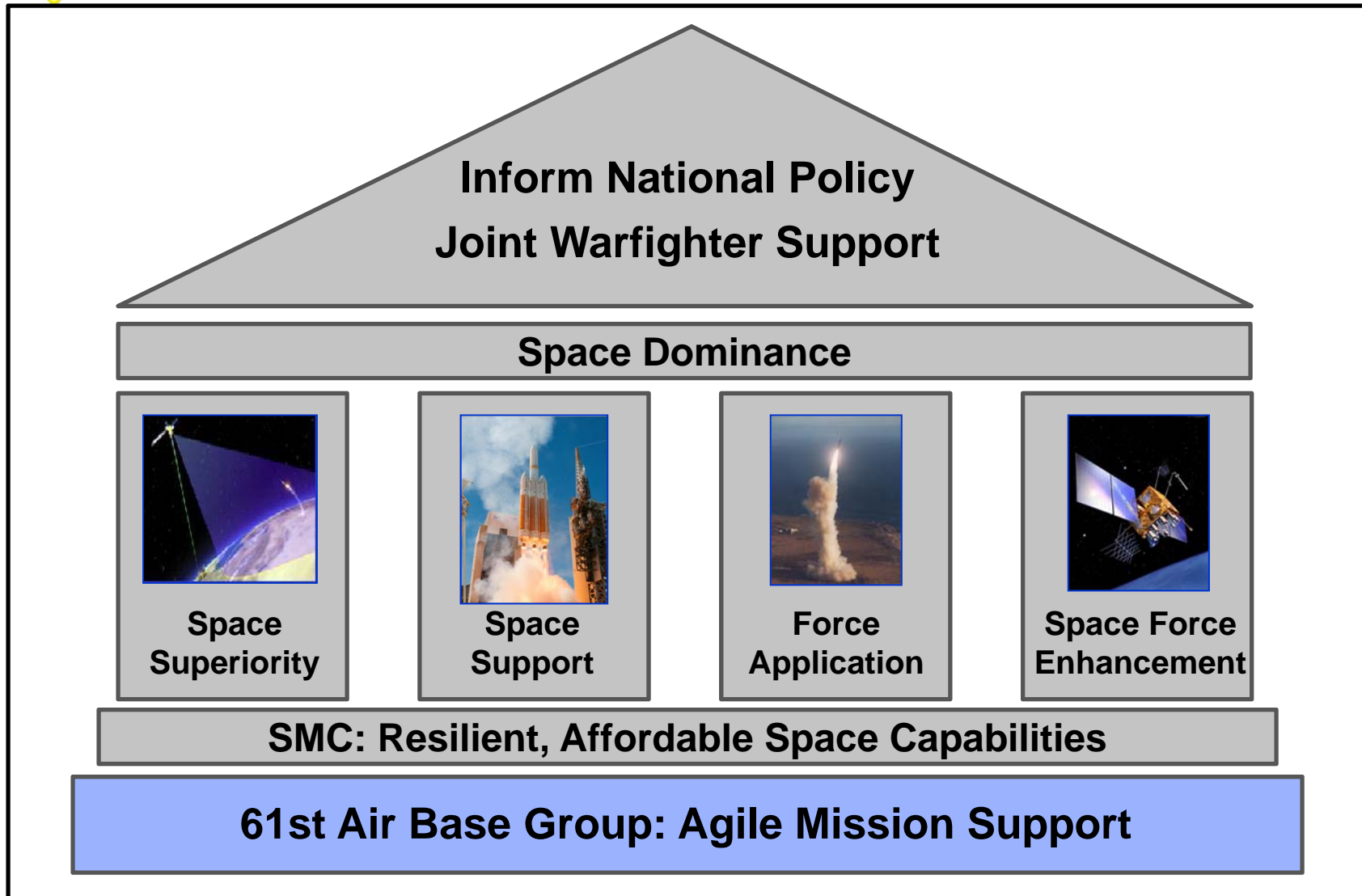


**CMSgt James
Langner**





Enabling Space Dominance





Our Focus Areas

Provide best-in-class facilities, security, medical, civil engineering, communications, logistics, readiness, and quality of life services for Los Angeles AFB, enabling the delivery of resilient, affordable space capabilities for the nation.

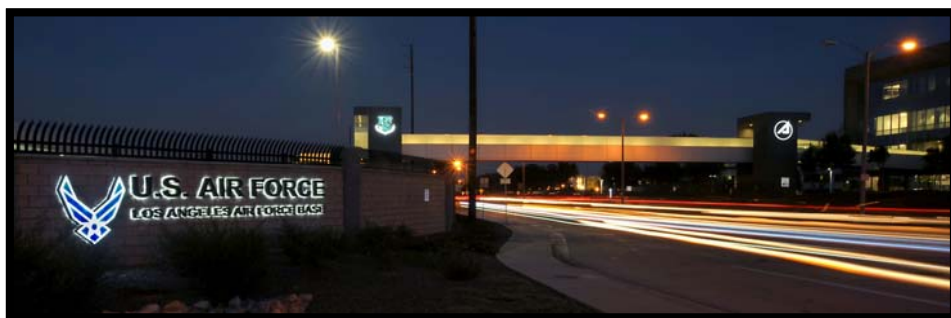
...by taking care of the

- **Mission**
- **Airmen**
- **Community**



Installation Characteristics

- **Single function – host for space acquisition center**
- **Bifurcated – 20 miles between El Segundo & Fort MacArthur**
- **Demographics – 25% active duty, 40% civilian, 35% contractor**
- **Located in America's 2nd largest city – only full-service military base in local area**
- **Efficient because of compactness and access to private industry, metropolitan and municipal services**





LA AFB Communities

- **210 Acres, 1.4M SF, \$1.3B physical plant**
- **LA AFB**
 - ~5,900 personnel
 - Mission / Mission Support
- **San Pedro Housing Areas**
 - 613 Housing Units
 - Dormitories
 - Community / QoL Services



LA AFB

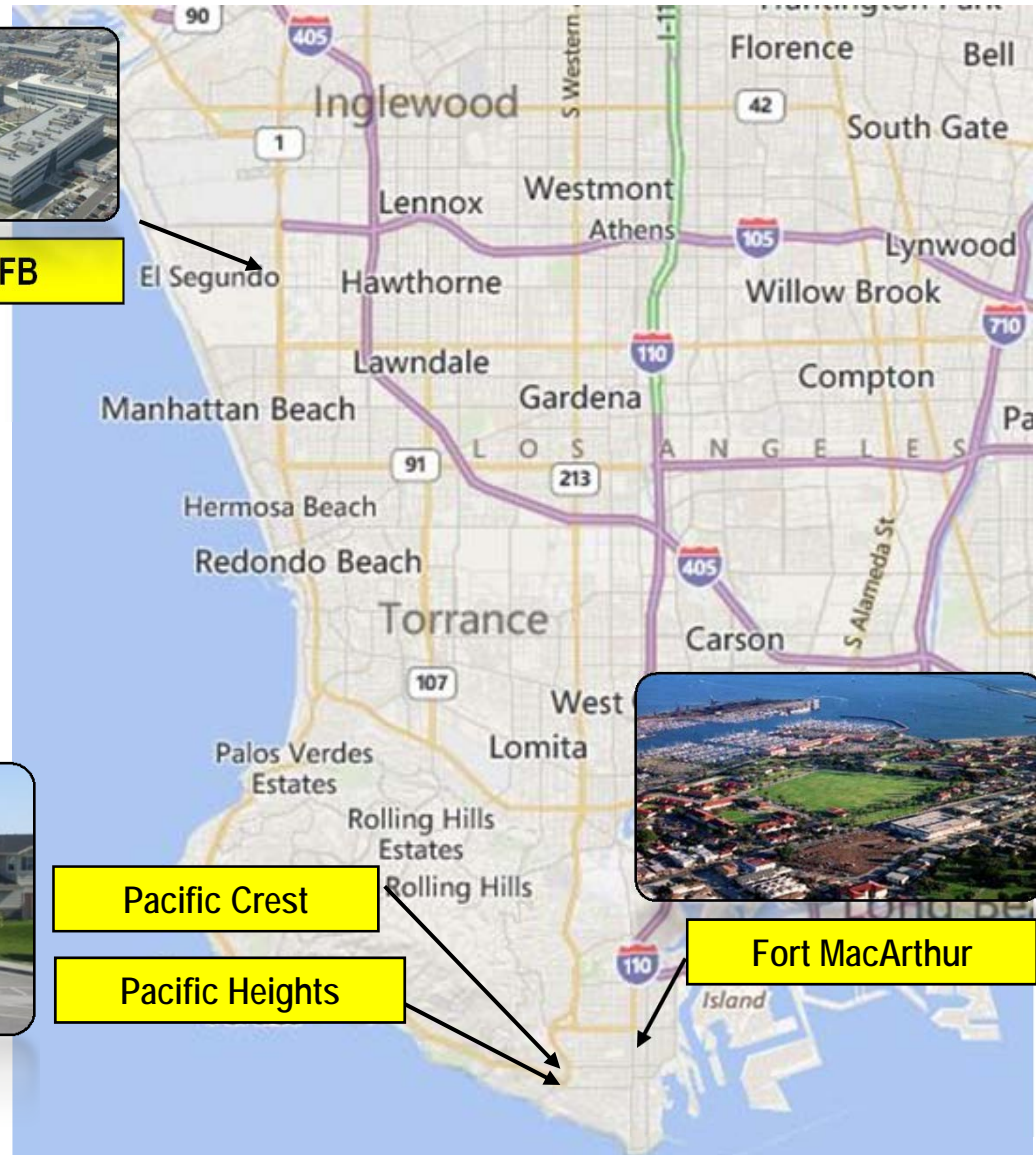


Pacific Crest

Pacific Heights



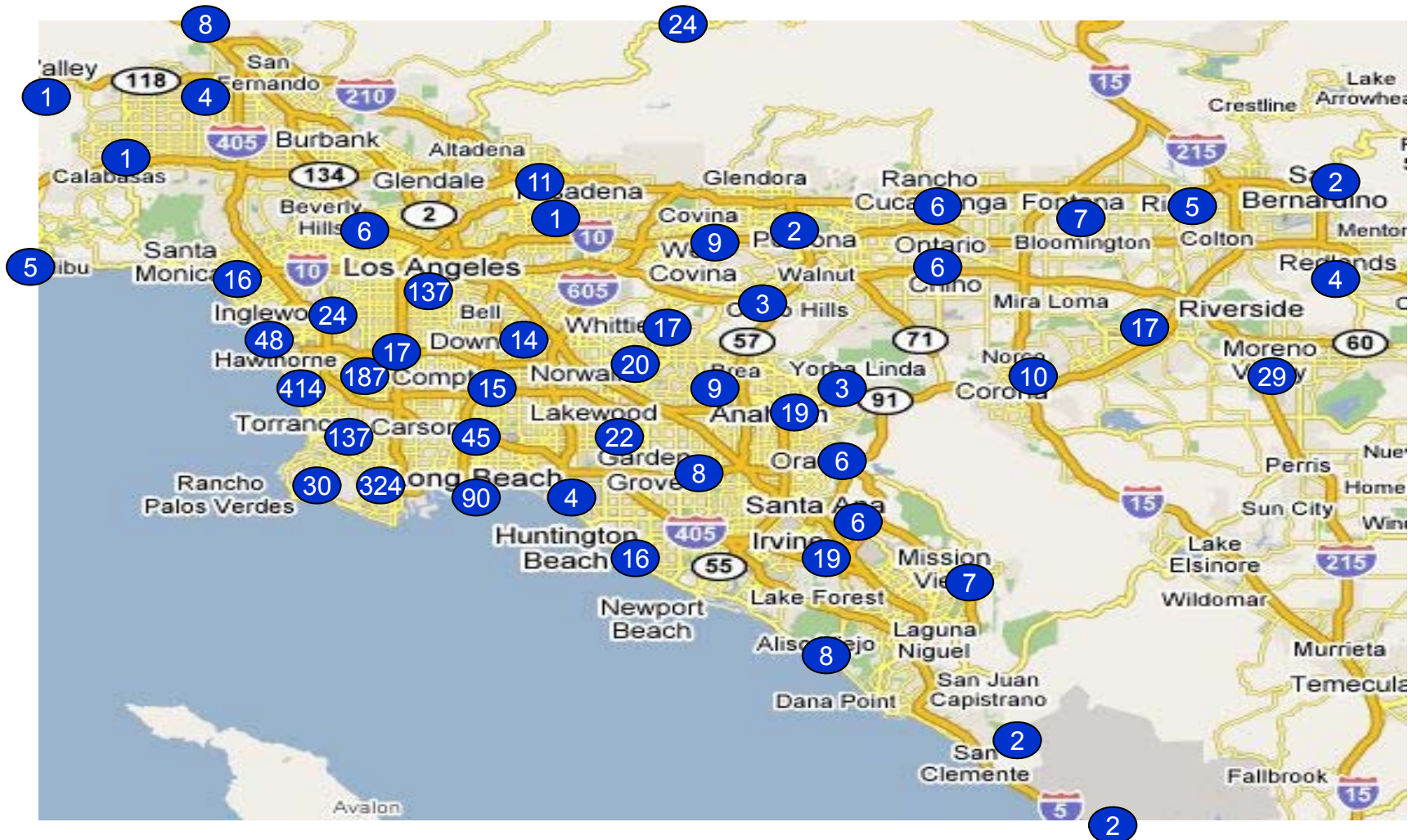
Fort MacArthur





Workforce Residence

Over 6,000 sq miles; hundreds of local communities





Facilities and Services

- Airman & Family Readiness
- Base Exchange: \$20.9M sales
- Commissary: \$21.5M sales
- Child Development Center
- Community Center / Club
- Education & Training
- Child Care / Youth Programs
- Fitness & Sports Centers
- Health & Wellness Center
- Honor Guard: 131 Functions; 985 hrs
- Tickets & Tours: \$2M sales
- Lodging: 23K guests per year
- Outdoor Recreation
- Military Parade Field
- Swimming Pool
- 2 Medical Clinics
 - 9K referrals to network providers
 - 95K prescriptions dispensed

Supporting over 200,000 Active Duty & Retired Personnel



Estimated Annual Economic Impact

Los Angeles Air Force Base

Annual Payroll (5,879 Direct Jobs: military, civilian, and contractor)	\$935M
Annual Expenditures (Infrastructure)	\$140M
Annual \$ Value of Indirect Jobs (Ex: personnel hired by aerospace contractors to build satellites)	\$614M
Total Economic Impact	\$1.69 Billion
Total Jobs Created (Direct and Indirect)	17,655

Space and Missile Systems Center Budget ***\$6.5 Billion**

CA Total Economic Impact (Direct and Indirect) ****\$6.1 Billion**

CA Total Jobs Created (Direct and Indirect) ****60,008**

* Budget including Payroll

** These numbers including EIA in LA county and other areas that have contracts with SMC



Support to LA Community

- **Fitness Center Support**
 - Army, Navy, Coast Guard, Marines, DoD & Government Agencies
- **Housing in partnership with Tierra Vista Communities for military, retirees, DoD employees (incl. contractors), “Hometown Heroes”**
- **Swimming Pool Training Support**
 - Underwater Training for FBI, Police, Coast Guard, Navy, Marines, Reserves
 - Lifeguard Training for Local DoD and Government Agencies
- **Full Military Honors to Fallen Heroes**
- **Honor Guard Support at Retiree Memorials**
- **Military Honors at Civic & Pro Sporting Events**
- **Casualty Notification & Survivor Benefits Briefings**
 - Santa Barbara – East to Indio/Coachella – South to Tijuana
 - Military, VA, and Social Security key benefits covered for survivors of Active Duty Military and Retirees



Support to LA Community

- **Host Annual Education Fairs and Job Fairs**
 - 75 Universities from over 40 States represented at the Education Fair
 - Job Fair Boasted over 20 Potential Employers
- **Support to AF recruiting stations**
- **LAAFB Volunteers**
 - 30,577 volunteer hours in 2013
- **Beach Day Clean-Up**
 - LAAFB adopted El Porto Beach in cooperation with Heal the Bay
 - 3 clean-ups per year, 1st held on Earth Day 2014, 2nd scheduled Aug 2014



Dependent on Local Support

- **Emergency Services**

- **Firefighting and rescue**
 - City of El Segundo or L.A. County Fire Depts
- **Bomb squad services**
 - L.A. City or County Bomb Squads
- **HAZMAT and CBRN response**
 - L.A. County Fire Health HAZMAT Division



- **Utilities, Supplies, Services**

- **High voltage electrical service and maintenance**
 - Southern California Edison, L.A. Dept of Water & Power
- **Water production & storage**
 - El Segundo Water System, L.A. Dept of Water & Power
- **Natural gas**
 - Southern California Gas Company
- **Wastewater disposal**
 - L.A. Dept of Water & Power





LA AFB Most-Attended School Districts

LA Unified	5702	Hermosa Beach	23
Home School	136	Menifee	19
El Segundo	66	Palos Verdes	18
Torrance	63	Inglewood	17
Hawthorne	56	Lakewood	17
Wiseburn	42	Culver City	16
Manhattan Beach	41	Lawndale	15
Artesia/Cerritos	32	Lake Elsinore	14
Redondo Beach	31	Anaheim	12
Long Beach	27	Cypress	10
Riverside	27	Santa Monica	7



Commitment to Energy Reduction

Air Force Infrastructure Energy Strategy

- Expand Renewables
- Manage Costs
- Improve Future Infrastructure
- Improve Current Infrastructure





Sustained Partnership

We value the strong relationship we have with our greater Los Angeles area civic, business, and community partners





Questions?

